



38 Edward Terrace, Caerphilly, CF83 4FL

£110,000

Entrance Hall

Double glazed entrance door, radiator, staircase to first floor.

Living/Kitchen 20'11" x 13'3" (6.40 x 4.05)



Double glazed windows to front and rear, half glazed door to rear, two radiators, stainless steel sink unit, base and wall cupboards, gas cooker point, space for washing machine, understairs storage cupboard.

First Floor Landing

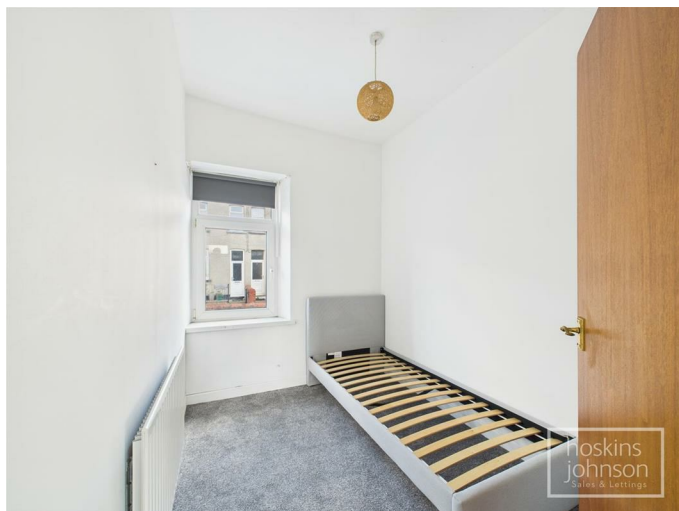
Double glazed window to rear.

Bedroom 1 12'1" x 9'0" (3.70 x 2.76)



Double glazed window to front, radiator.

Bedroom 2 9'1" x 6'9" (2.78 x 2.08)



Double glazed window to front, radiator.

Shower Room



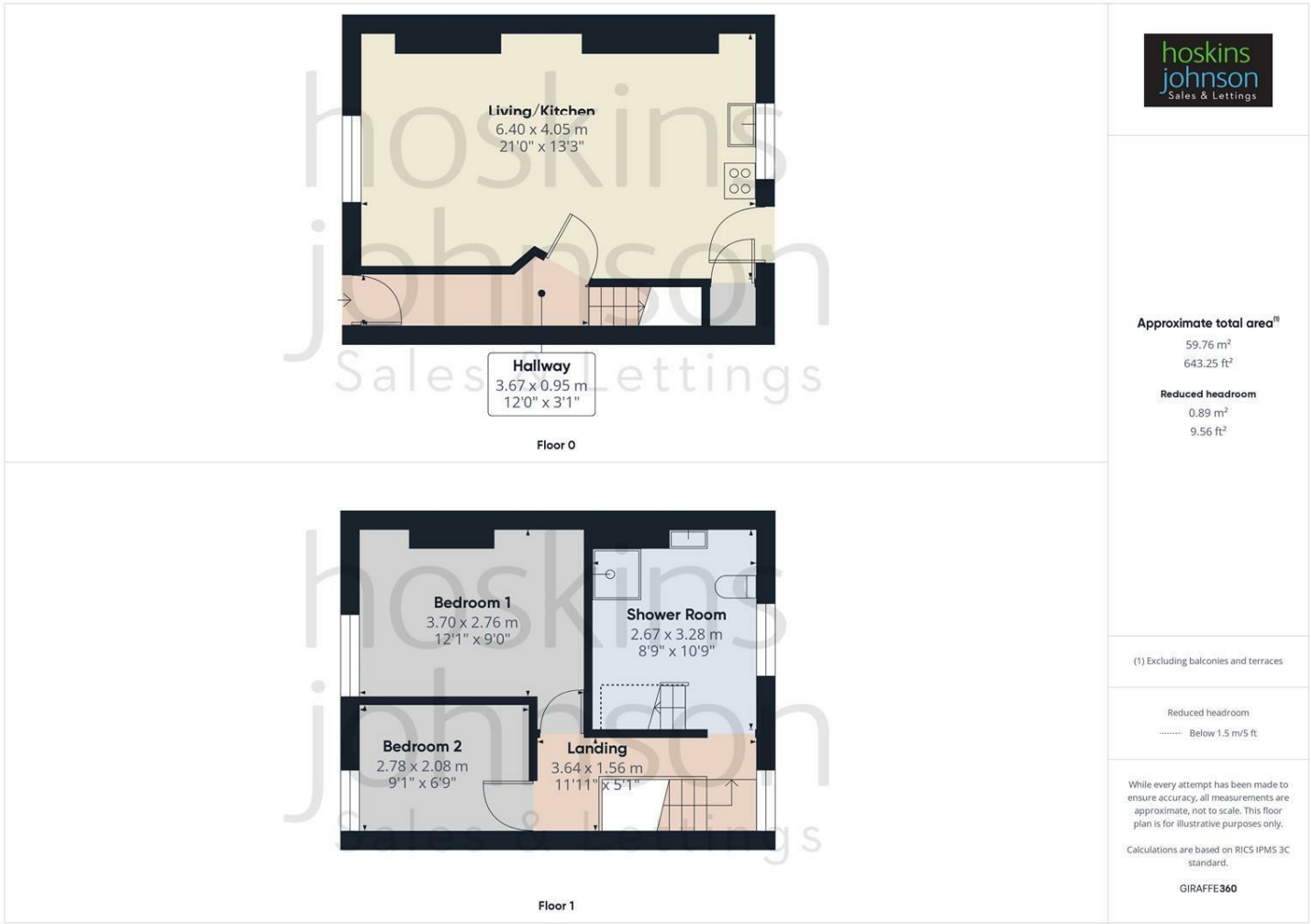
White suite comprising tiled shower cubicle, wc, wash hand basin, bidet, wall mounted gas combination boiler, double glazed window to rear, staircase to attic.

Outside

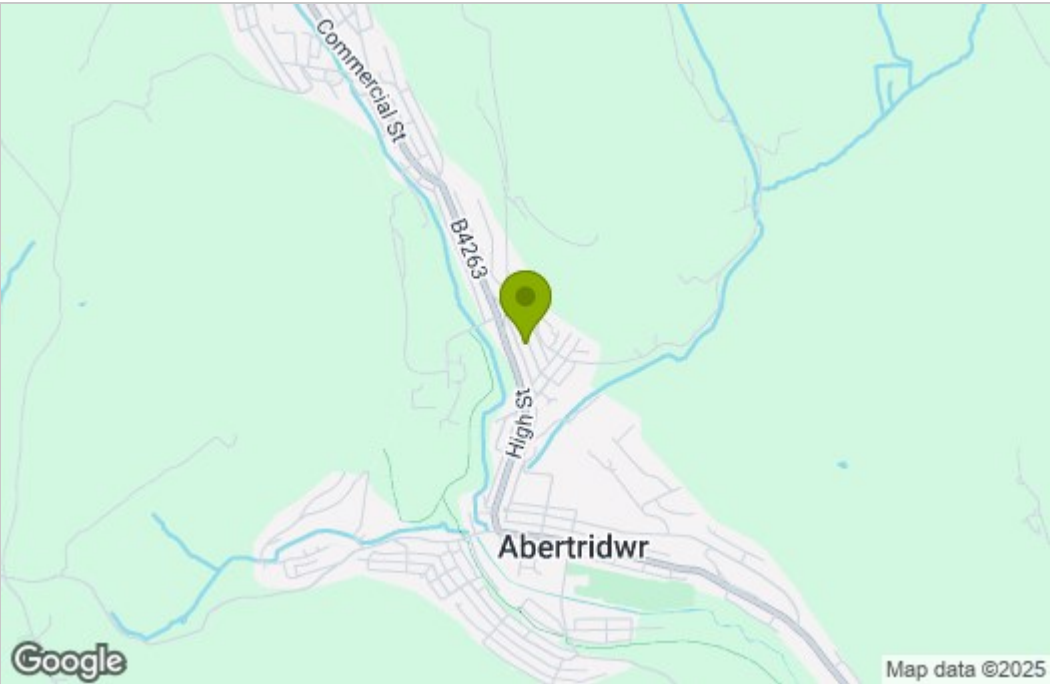


Rear garden, which is currently overgrown, with large garage (in need of repair).

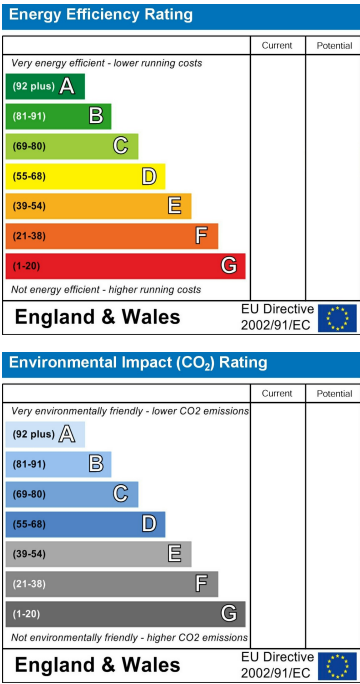
Floor Plan



Area Map



Energy Efficiency Graph



These particulars, whilst believed to be accurate are set out as a general outline only for guidance and do not constitute any part of an offer or contract. Intending purchasers should not rely on them as statements of representation of fact, but must satisfy themselves by inspection or otherwise as to their accuracy. No person in this firms employment has the authority to make or give any representation or warranty in respect of the property.