

Gwynfa Crawshay Street, Pontypridd, CF37 3EG

£235,000

Nestled in the charming village of Ynysybwl, this delightful semi-detached house offers a perfect blend of original features and modern living. With four spacious bedrooms, this property is ideal for families seeking comfort and style.

As you enter, you will be greeted by an abundance of natural light that fills the home, creating a warm and inviting atmosphere. The original features throughout the house add character and charm, making it a unique place to call home. The layout is thoughtfully designed, providing ample space for both relaxation and entertaining.

The family bathroom is well-appointed, catering to the needs of a busy household. Each bedroom offers a peaceful retreat, ensuring everyone has their own space to unwind after a long day.

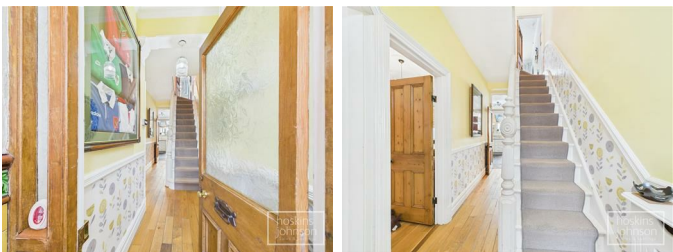
This property is not just a house; it is a home filled with potential and warmth, perfect for those looking to settle in a friendly community. With its convenient location, you will find local amenities and transport links within easy reach, making daily life a breeze.

Entrance Lobby



Glazed entrance doors, tiled floor and walls.

Hallway



Original half glazed entrance door, radiator, wood flooring, staircase to first floor, understairs storage.

Lounge 13'6" x 12'0" (4.13 x 3.67)



Double glazed bay window to front, radiator, coved ceiling, picture rail, wood flooring, attractive feature fireplace, double doors leading into living room.

Living Room 10'7" x 10'3" (3.25 x 3.14)



Radiator, coved ceiling, picture rail, feature fireplace, wood flooring.

Kitchen/Diner 20'7" x 9'10" (6.28 x 3.02)



A lovely light kitchen with ample room for table and chairs. Cream base and wall cupboards with tiled splash backs, stainless steel sink unit, range style cooker with extractor hood, integral dishwasher, breakfast bar, flagstone flooring, radiator, part glazed roof, double glazed window to rear and french doors leading out to the garden.

Utility

Space for washing machine, tumble drier and fridge/freezer, tiled floor, double glazed window and half glazed door to side.

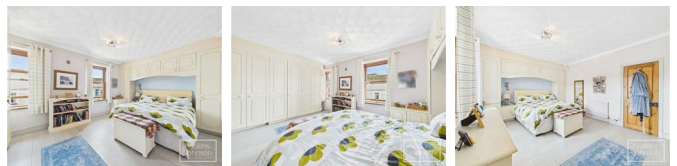
Cloaks/WC

WC, wash hand basin, tiled floor, wall mounted gas combination boiler, double glazed window to rear.

First Floor Landing

Staircase to second floor, storage cupboards.

Bedroom 1 16'5" x 12'2" (5.01 x 3.71)



Two double glazed windows to front, radiator, coved ceiling, laminated wood flooring, fitted wardrobes.

Bedroom 2 9'11" x 7'4" (3.04 x 2.25)



Double glazed window to rear, radiator, coved ceiling, laminated wood flooring.

Bedroom 3 10'6" x 8'7" max (3.21 x 2.64 max)



Double glazed window to side, radiator, laminated wood flooring, built in wardrobes.

Bathroom



Three piece suite in white comprising panelled bath with mains shower, wc, wash hand basin, tiled walls, vertical radiator, coved ceiling, double glazed window to rear.

Second Floor

Bedroom 4 15'11" x 11'9" max (4.87 x 3.60 max)



Two skylights, radiator, laminated wood flooring.

Outside

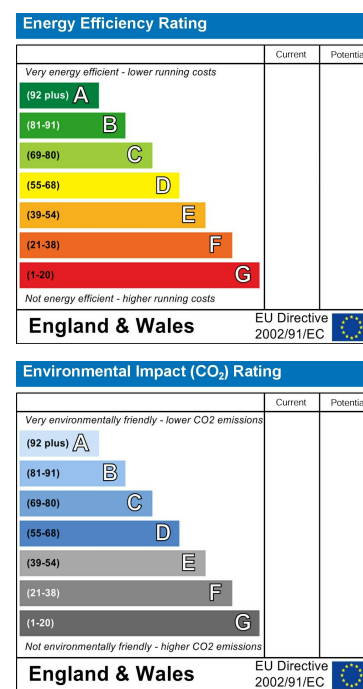
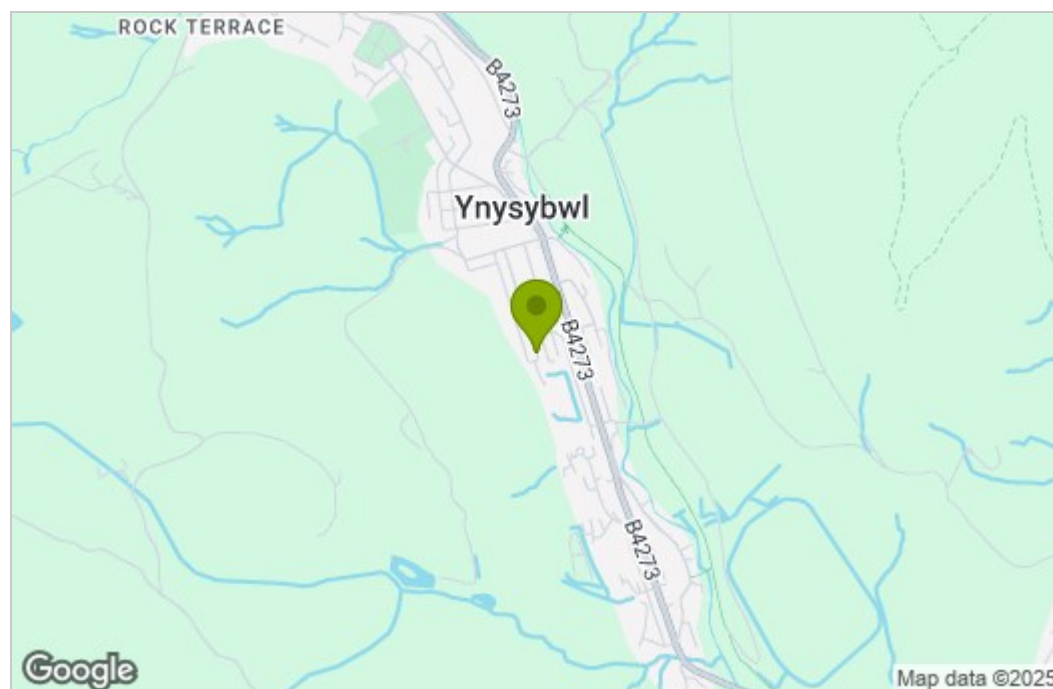


Paved frontage.
Terraced garden with paved seating areas, lawn and rear access.

Floor Plan



Area Map



These particulars, whilst believed to be accurate are set out as a general outline only for guidance and do not constitute any part of an offer or contract. Intending purchasers should not rely on them as statements of representation of fact, but must satisfy themselves by inspection or otherwise as to their accuracy. No person in this firm's employment has the authority to make or give any representation or warranty in respect of the property.

22 Market Street, Pontypridd, CF37 2ST
Tel: 01443 404093 Email: pontypridd@hoskinsjohnson.co.uk www.hoskinsjohnson.co.uk