

9 Coedcae Road, Pontypridd, CF37 2NP

£135,000

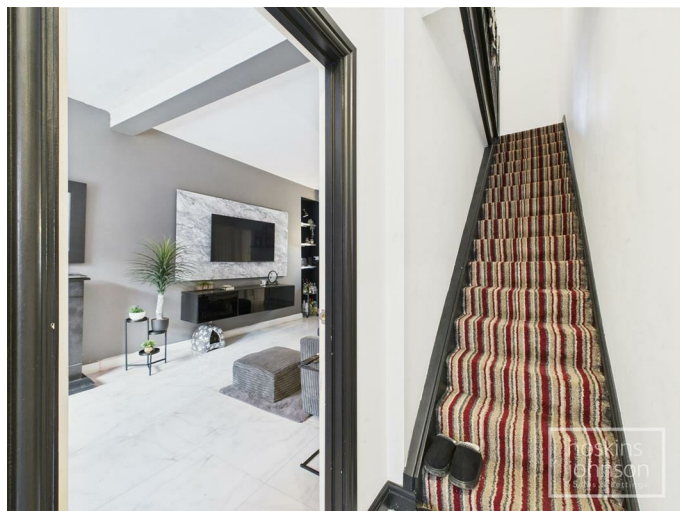
Located in the charming area of Trehafod, this improved mid-terraced house presents an excellent opportunity for first-time buyers. The property boasts three well-proportioned bedrooms, providing ample space for a growing family or those seeking extra room for guests or a home office.

Upon entering, you will find a large, welcoming reception room that offers a comfortable space for relaxation and entertaining. The heart of the home is undoubtedly the modern grey gloss kitchen, which is equipped with an oven & hob, making it a delightful area for culinary enthusiasts to create and enjoy meals.

The first-floor bathroom has been thoughtfully refitted, ensuring a fresh and contemporary feel. This enhancement adds to the overall appeal of the property, making it a practical choice for everyday living.

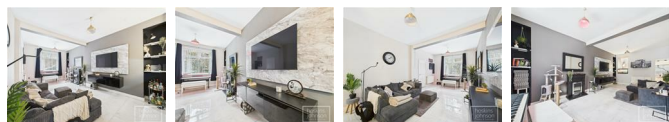
With its convenient location, this mid-terraced house is not only a lovely home but also a fantastic investment for those looking to establish themselves in the vibrant community of Trehafod. The combination of modern amenities and a welcoming atmosphere makes this property a must-see for anyone seeking a new place to call home.

Entrance Hall



Double glazed entrance door, tiled floor, radiator, staircase to first floor.

Living Room 22'4" x 11'7" (6.83 x 3.54)



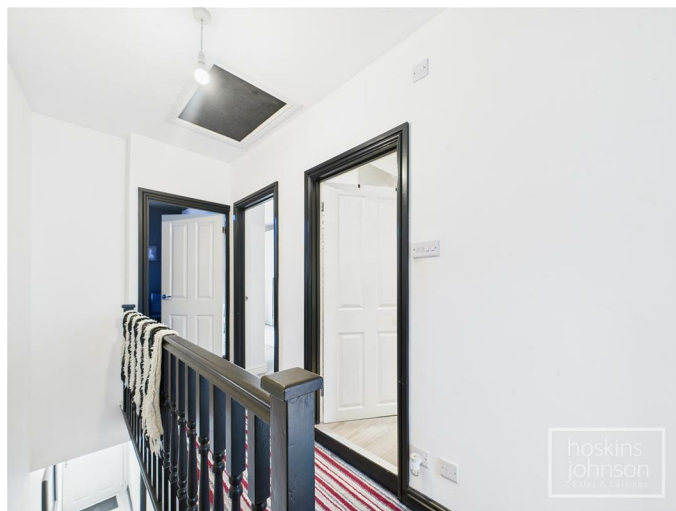
Double glazed window to front, two radiators, tiled floor, understairs storage cupboard.

Kitchen 14'9" x 10'11" max (4.50 x 3.34 max)



Fitted with a range of modern, grey gloss base and wall cupboards with tiled splash backs, stainless steel sink unit, ceramic hob and electric oven with extractor hood above, space for fridge/freezer and washing machine, integral dishwasher, vertical radiator, ceiling spotlights, double glazed window and half glazed door to rear.

First Floor Landing



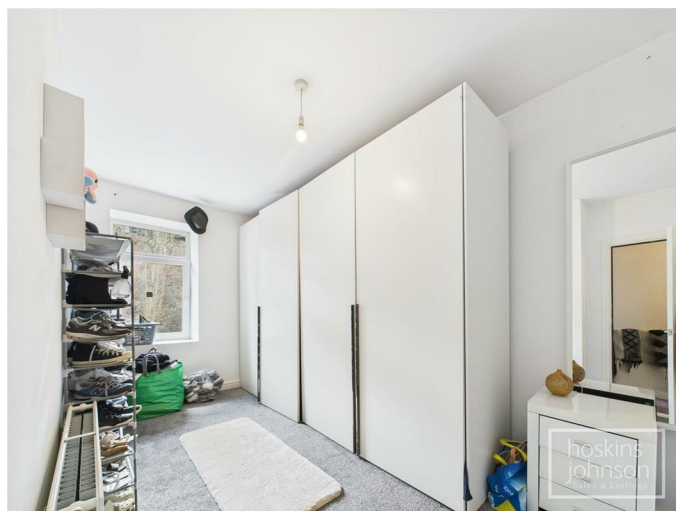
Attic access.

Bedroom 1 14'9" x 10'11" max (4.51 x 3.33 max)



Double glazed window to rear, radiator.

Bedroom 2 15'0" x 7'5" (4.58 x 2.28)



Double glazed window to front, radiator.

Bedroom 3 11'1" x 6'8" (3.40 x 2.04)



Double glazed window to front, radiator.

Bathroom

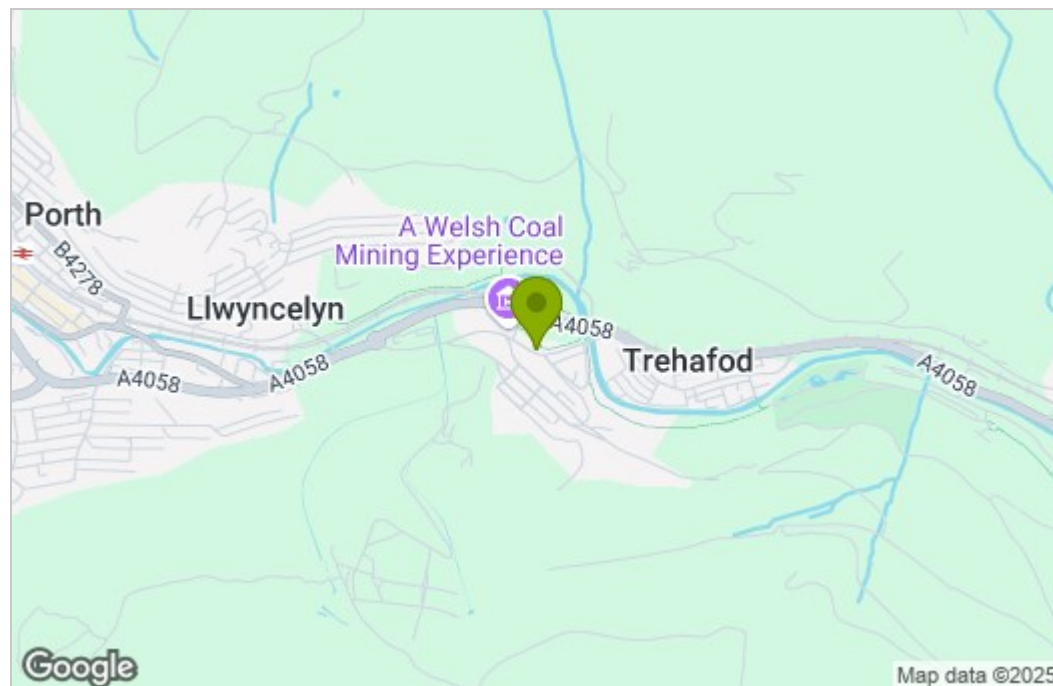


Modern three piece suite in white comprising panelled bath with shower mixer taps, wc, wash hand basin, chrome heated towel rail, wood effect vinyl tiled floor, ceiling spotlights, extractor fan.

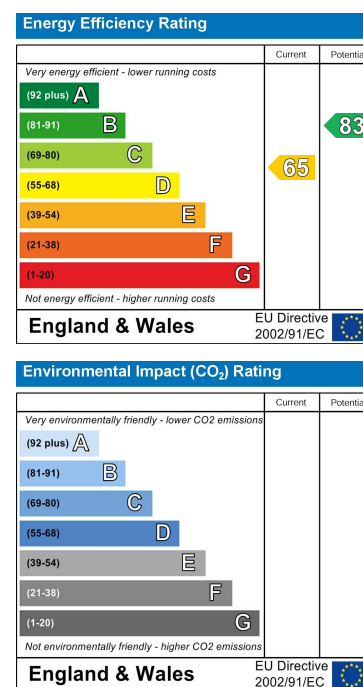
Outside

Rear courtyard with lane access.

Area Map



Energy Efficiency Graph



22 Market Street, Pontypridd, CF37 2ST
Tel: 01443 404093 Email: pontypridd@hoskinsjohnson.co.uk www.hoskinsjohnson.co.uk