

6 Danylan Road, Pontypridd, CF37 1ES

£199,950

360 WALK THROUGH TOUR AVAILABLE NOW

**** Well Presented Family Home ** Three Double Bedrooms ** Popular Location Close to Amenities ****

Viewing recommended on this lovely family home located in the popular area of Maesycod, close to many amenities, local shops, schools and minutes from transport links and town centre.

The spacious accommodation comprises entrance lobby, hallway, large lounge, spacious kitchen/breakfast room with space for table & chairs, bathroom with separate shower cubicle and three double bedrooms.

There is a terraced garden with seating areas, lawn & storage shed.

An ideal family home.

Recommended.

Entrance Lobby

Double glazed entrance door, tiled floor.

Hallway



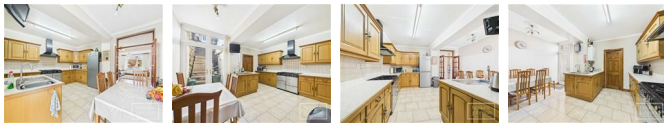
Half glazed door, radiator, coved ceiling, tiled floor, staircase to first floor.

Lounge 20'8" x 12'1" (6.32 x 3.69)



Double glazed window to front, two radiators, coved ceiling, laminated wood flooring, fireplace with flame effect gas fire, understairs storage cupboard.

Kitchen/Breakfast Room 14'9" x 14'8" max (4.50 x 4.49 max)



An excellent size cooking and eating space with ample room for table and chairs.

Fitted base and wall cupboards with tiled splash backs, stainless steel sink unit, gas range style cooker with extractor hood above, space for fridge/freezer, washing machine and tumble drier, wall mounted gas combination boiler, radiator, coved ceiling, tiled floor, double glazed french doors leading out to the garden.

Bathroom



White suite comprising jacuzzi style corner bath with shower mixer taps, wc, wash hand basin, tiled mains shower cubicle, tiled walls and floor, radiator, coved ceiling, two double glazed windows to side and double glazed window to rear.

First Floor Landing

Coved ceiling, attic access.

Bedroom 1 13'3" x 12'2" (4.04 x 3.72)



Two double glazed windows to front, radiator, fitted wardrobes.

Bedroom 2 14'6" x 8'2" (4.42 x 2.50)



Double glazed window to rear, radiator, coved ceiling, laminated wood flooring.

Bedroom 3 9'8" x 8'7" (2.95 x 2.63)



Double glazed window to rear, radiator, coved ceiling, laminated wood flooring.

Outside

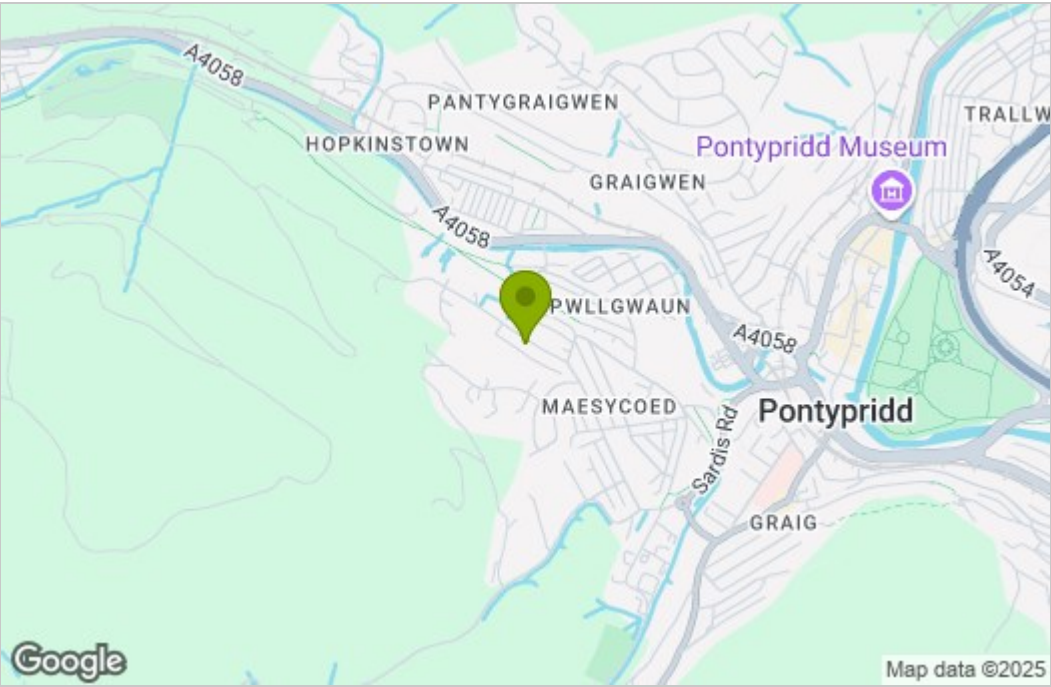


Terraced rear garden with paved seating areas, lawn and block built storage shed.

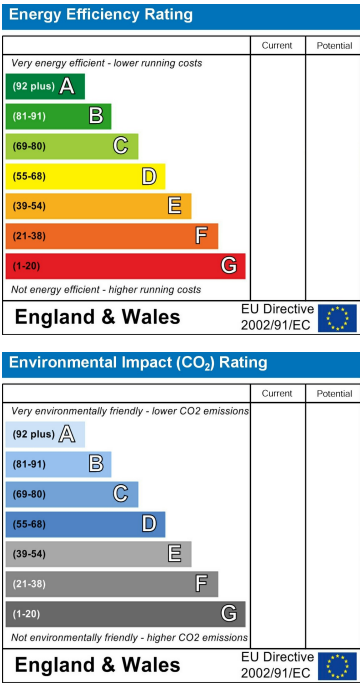
Floor Plan



Area Map



Energy Efficiency Graph



These particulars, whilst believed to be accurate are set out as a general outline only for guidance and do not constitute any part of an offer or contract. Intending purchasers should not rely on them as statements of representation of fact, but must satisfy themselves by inspection or otherwise as to their accuracy. No person in this firms employment has the authority to make or give any representation or warranty in respect of the property.