



Office Suite A Llanover House, Pontypridd, CF37 4DY

£600 Per Calendar Month

**** Suite of Three Offices ** Close to Main Roads & Town Centre ** First Floor ****

Well presented offices located within a larger block of offices.

Three inter connecting offices with new carpets and freshly decorated.

Light and airy with double glazing, heating, communal toilets and parking.

Convenient for Town Centre, main roads and bus/train stations.

Rent is inclusive of lighting and heating.

Communal Entrance

Office 1 20'2" x 11'2" (6.17 x 3.41)



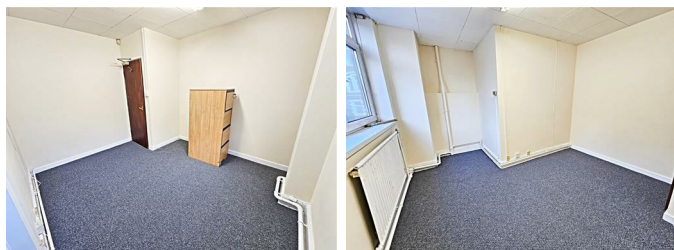
Entrance door and window, radiator.

Office 2 11'6" x 10'0" (3.53 x 3.06)



Double glazed window to front, radiator.

Office 3 11'8" x 9'8" (3.58 x 2.97)



Double glazed windows to front, radiator.

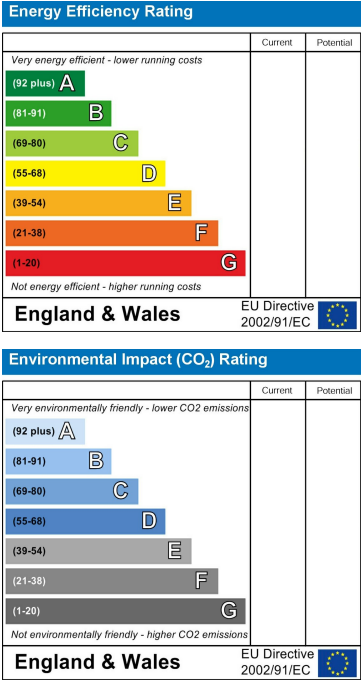
Shared Toilet Facilities

Floor Plan

Area Map



Energy Efficiency Graph



These particulars, whilst believed to be accurate are set out as a general outline only for guidance and do not constitute any part of an offer or contract. Intending purchasers should not rely on them as statements of representation of fact, but must satisfy themselves by inspection or otherwise as to their accuracy. No person in this firms employment has the authority to make or give any representation or warranty in respect of the property.