

13 Rosser Street, Pontypridd, CF37 1EB

£221,950

Nestled on the charming Rosser Street in Pontypridd, this well-presented mid-terrace house is an ideal family home. Boasting three spacious bedrooms, this property offers ample room for both relaxation and entertainment. The large lounge serves as a welcoming space, perfect for family gatherings or quiet evenings in.

The modern kitchen is a standout feature, complete with an open-plan breakfast area that invites casual dining and social interaction. This layout not only enhances the functionality of the space but also creates a warm and inviting atmosphere for family meals or entertaining guests.

Conveniently located, the property is ideally placed for easy access to local amenities and shops, ensuring that daily necessities are just a short stroll away. This combination of comfort, style, and practicality makes this home a wonderful opportunity for those seeking a vibrant community in which to settle.

With its appealing features and prime location, this mid-terrace house on Rosser Street is sure to attract interest from families looking for a place to call home.

Entrance Lobby

Half glazed entrance door.

Hallway



Radiator, coved ceiling, laminated wood flooring, staircase to first floor.

Lounge 20'10" x 11'6" (6.37 x 3.52)



Double glazed window to front, two radiators, coved ceiling, laminated wood flooring.

Breakfast Area 11'1" x 5'4" (3.40 x 1.65)



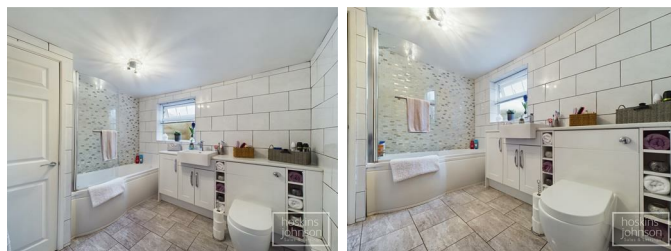
Double glazed french doors leading out to the garden, laminated wood flooring, open plan to kitchen.

Kitchen 12'0" x 9'0" (3.66 x 2.76)



Modern kitchen fitted with a range of cream base and wall cupboards with tiled splash backs, stainless steel sink unit, ceramic hob and electric oven with extractor hood above, integral dishwasher, washing machine, fridge and freezer, small breakfast bar, radiator, understairs storage, laminated wood flooring.

Bathroom



Modern three piece suite in white comprising P shaped shower bath with shower mixer taps, wc, wash hand basin with storage cupboards, tiled walls and floor, chrome heated towel rail, airing cupboard with wall mounted gas combination boiler, double glazed window to rear.

First Floor Landing



Double glazed window to rear, staircase to attic room.

Bedroom 1 11'10" x 9'9" (3.62 x 2.98)



Double glazed window to front, radiator.

Bedroom 2 9'0" x 9'0" (2.75 x 2.75)



Double glazed window to rear, radiator.

Bedroom 3 8'9" x 6'2" (2.67 x 1.89)



Double glazed window to front, radiator.

Second Floor Attic Room 15'3" x 11'5" (4.65 x 3.50)



An excellent size attic room suitable for a variety uses, skylight to rear and eaves storage.

Outside



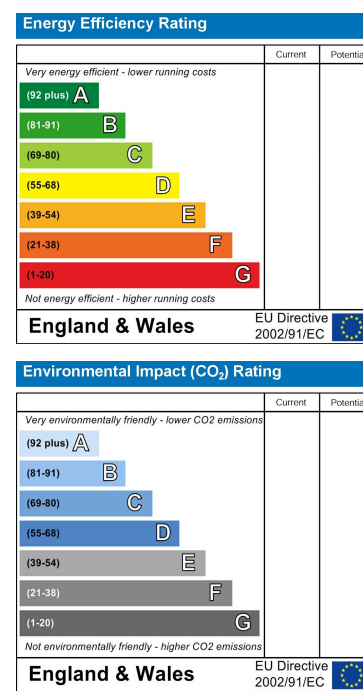
Small forecourt.

Rear garden with indian sandstone paths, artificial grass, gravelled area and rear access.

Floor Plan



Area Map



These particulars, whilst believed to be accurate are set out as a general outline only for guidance and do not constitute any part of an offer or contract. Intending purchasers should not rely on them as statements of representation of fact, but must satisfy themselves by inspection or otherwise as to their accuracy. No person in this firm's employment has the authority to make or give any representation or warranty in respect of the property.

22 Market Street, Pontypridd, CF37 2ST
Tel: 01443 404093 Email: pontypridd@hoskinsjohnson.co.uk www.hoskinsjohnson.co.uk