

**84 Wood Street, Pontypridd, CF37 4HA**

**£105,000**

**\*\* Mid Terraced House \*\* Three Bedrooms \*\* In Need of Updating \*\***

Of particular interest to builder/investor or a first time buyers project.

A mid terraced house located in the popular village of Cilfynydd, close to amenities, local shops & schools and minutes from Town Centre and main roads.

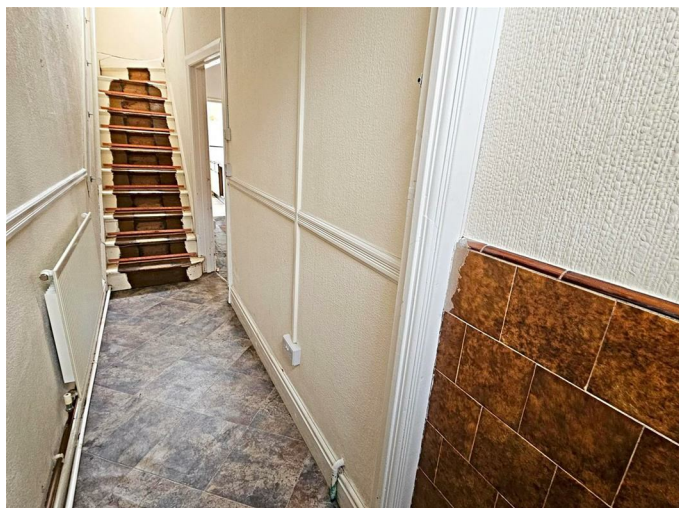
Comprising entrance hall, lounge, living room, kitchen, shower/wet room and three bedrooms.

There is a good size rear garden with storage and lane access and views over the area.

Offered with no onward chain.



### Entrance Hall



Panelled entrance door, radiator, staircase to first floor.

### Lounge 11'4" x 9'4" (3.46 x 2.86)



Double glazed window to front, radiator, glazed doors leading into living room.

### Living Room 11'5" x 11'5" (3.48 x 3.48)



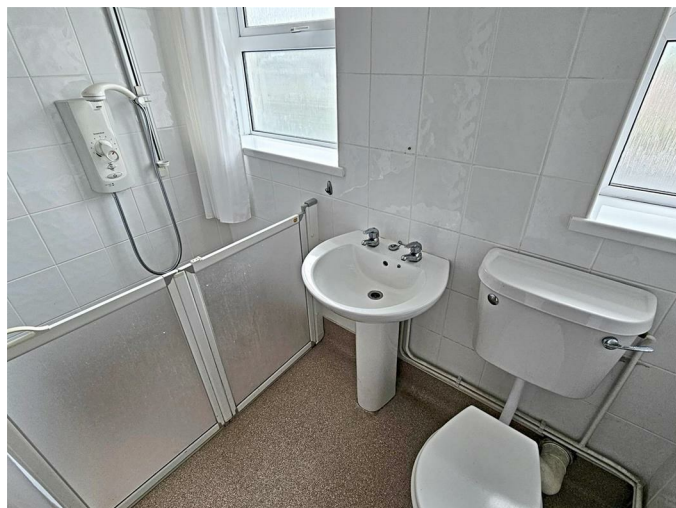
Double glazed window to rear, radiator, understairs storage.

### Kitchen 8'2" x 7'9" (2.51 x 2.37)



Stainless steel sink unit, base and wall cupboards, gas cooker point, double glazed window and half glazed door to side.

### Shower/Wet Room

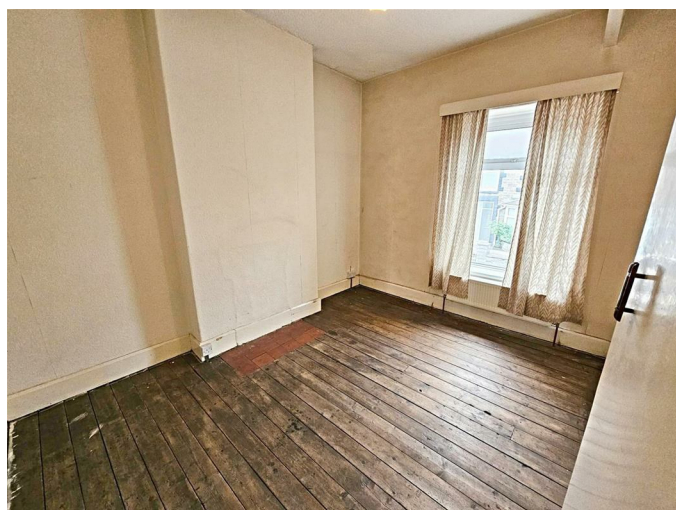


Walk in shower, wc, wash hand basin, tiled walls, radiator, two double glazed windows to rear.

### First Floor Landing

Double glazed window to rear, storage cupboard.

### Bedroom 1 11'4" x 9'4" (3.46 x 2.85)



Double glazed window to front, radiator.

### Bedroom 2 10'5" x 9'8" (3.18 x 2.97)



Double glazed window to rear, radiator, airing cupboard with gas combination boiler.

### Bedroom 3 10'5" x 6'6" (3.20 x 2.00)



Double glazed window to front, radiator.

### Outside



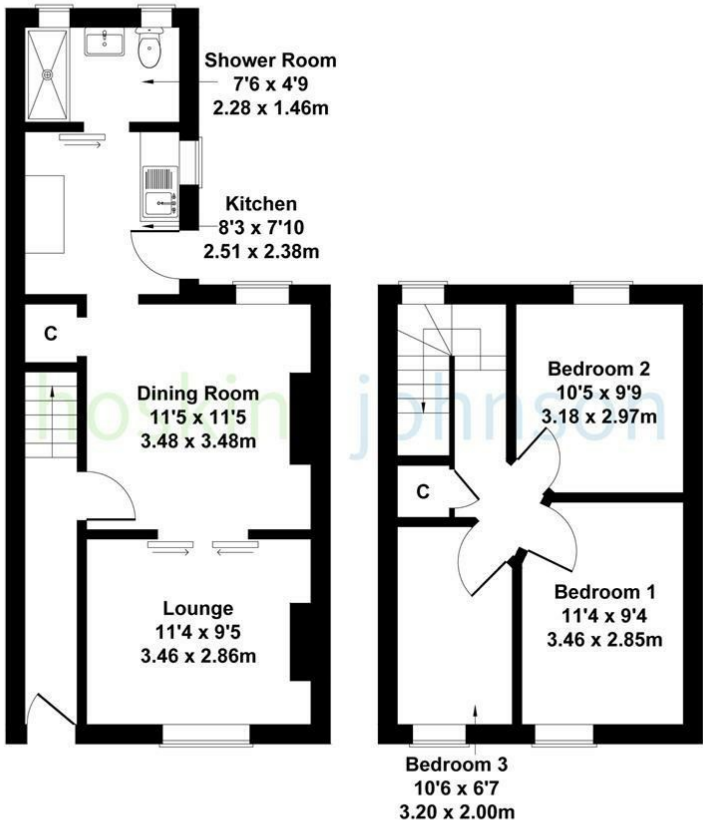
Paved and lawned rear garden with basement storage and lane access.



Floor Plan

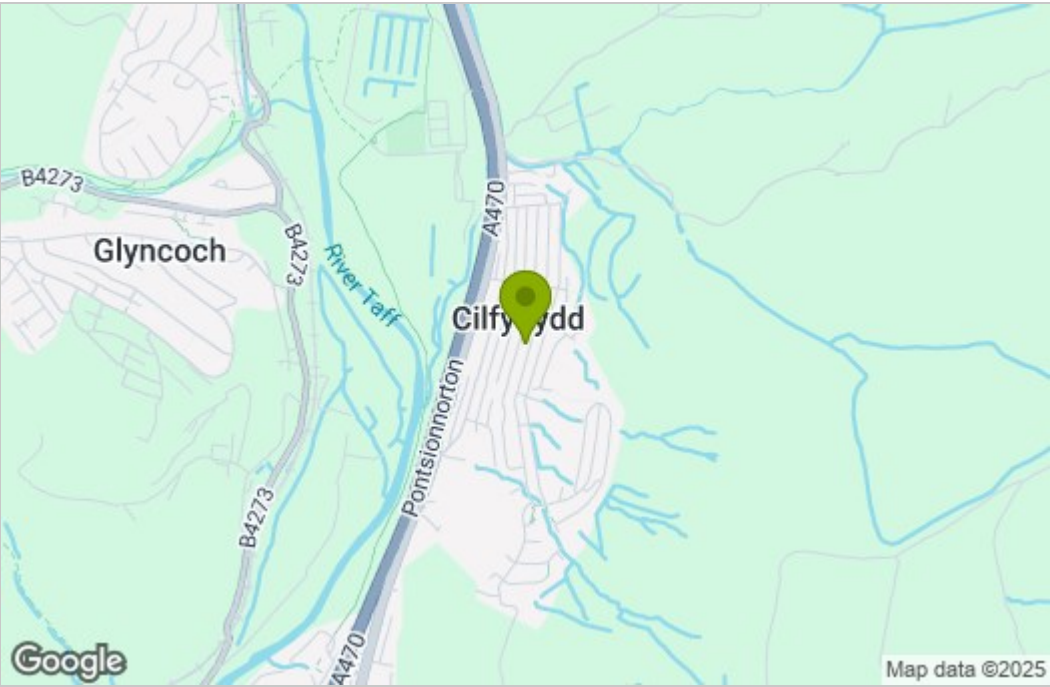
84 Wood Street, Cilfynydd

Approximate Gross Internal Area  
721 sq ft - 67 sq m

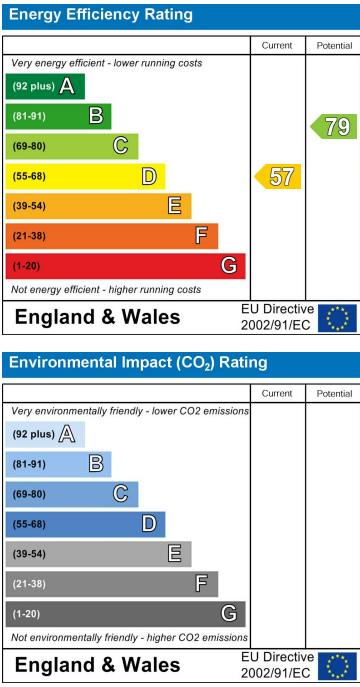


Not to Scale. Produced by The Plan Portal 2024  
For Illustrative Purposes Only.

Area Map



Energy Efficiency Graph



These particulars, whilst believed to be accurate are set out as a general outline only for guidance and do not constitute any part of an offer or contract. Intending purchasers should not rely on them as statements of representation of fact, but must satisfy themselves by inspection or otherwise as to their accuracy. No person in this firms employment has the authority to make or give any representation or warranty in respect of the property.