



## 17 Sheppard Street, Pontypridd, CF37 1HT

**£145,000**

360 WALK THROUGH TOUR AVAILABLE - TAKE A LOOK NOW

Welcome to Sheppard Street, Pwllgwaun - a charming mid-terrace house that could be your next dream home! This delightful property boasts three cosy bedrooms, perfect for a growing family or those in need of extra space.

Situated in a popular location, you'll find yourself just a stone's throw away from local shops and schools, making those daily errands a breeze. The large lounge/diner is ideal for entertaining guests or simply relaxing with your loved ones after a long day. Step outside into the sunny garden, where you can enjoy a cup of tea in the morning sun or host a summer barbecue with friends.

And the best part? This property comes with no chain, meaning you could be moving in sooner than you think!

Don't miss out on this fantastic opportunity to own a lovely home in a sought-after area. Book a viewing today and start picturing your life in this wonderful abode on Sheppard Street.



### Entrance Lobby

Half glazed entrance door.

Lounge/Diner 21'11" x 14'9" (6.70 x 4.51)



Double glazed window to front, two radiators, coved ceiling, staircase to first floor.

Kitchen 9'4" x 7'8" (2.85 x 2.35)



Fitted with modern, white gloss base and wall cupboards with tiled splash backs, stainless steel sink unit, gas oven and hob, space for washing machine, double glazed window to rear.

### Utility Area

Space for tumble drier, wall mounted gas combi boiler, radiator, half glazed door to rear.

### Bathroom/WC



Modern three piece suite in white and comprising of panelled bath with shower, wc, wash hand basin, part tiled walls, chrome towel rail, double glazed sky light.

### First Floor Landing



Double glazed window to rear, attic access.

Bedroom 1 12'10" x 7'11" (3.93 x 2.43)



Double glazed window to front, radiator.

Bedroom 2 9'6" x 8'10" (2.92 x 2.71)



Double glazed window to rear, radiator.

Bedroom 3 9'7" x 7'3" (2.94 x 2.22)



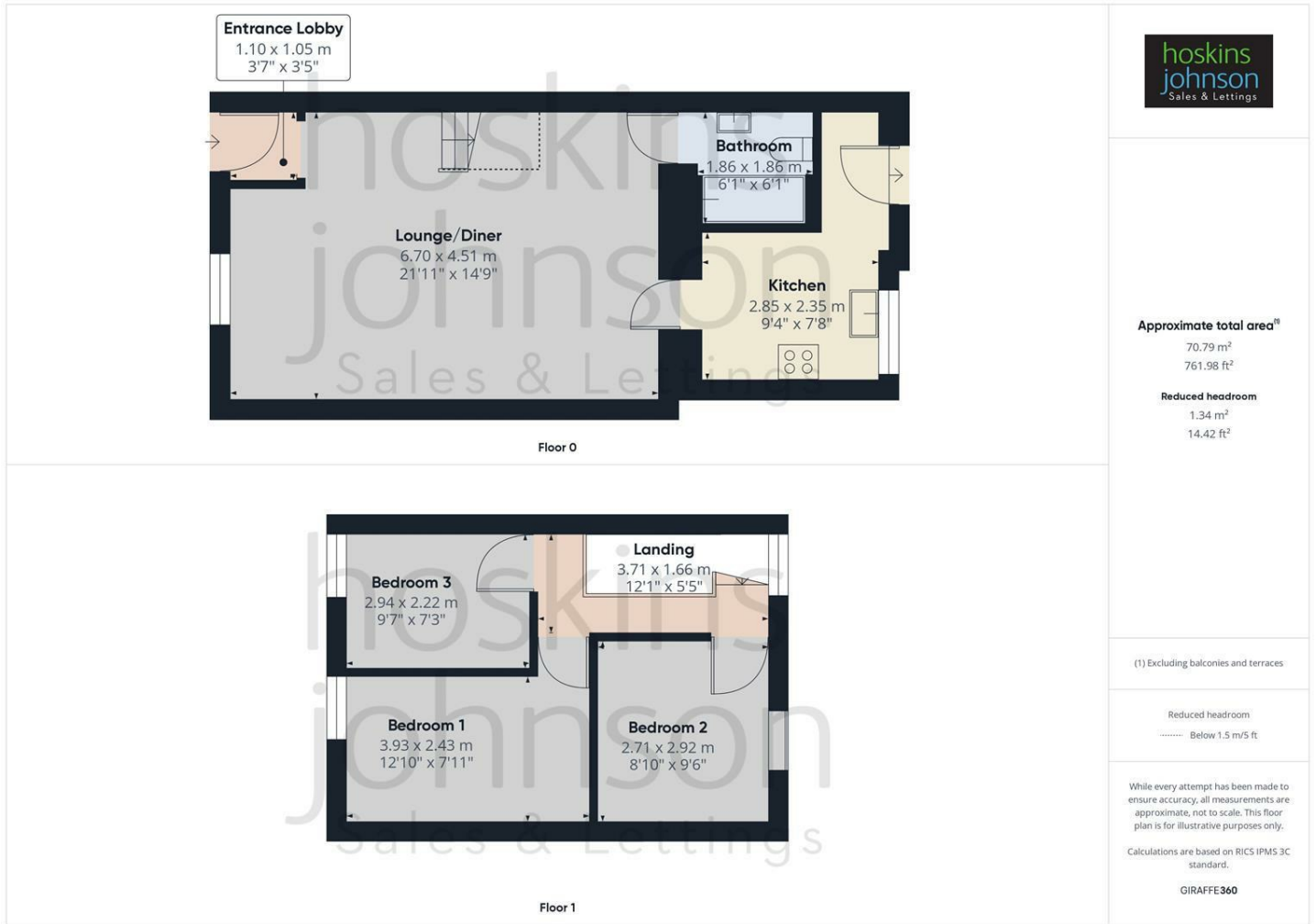
Double glazed window to front, radiator.

### Outside



Concreted rear yard with lane access.

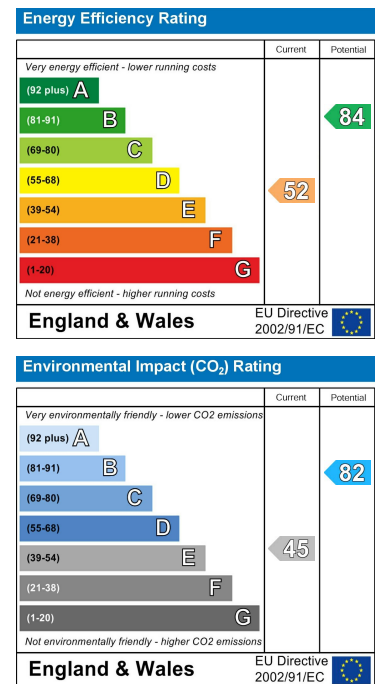
## Floor Plan



## Area Map



## Energy Efficiency Graph



These particulars, whilst believed to be accurate are set out as a general outline only for guidance and do not constitute any part of an offer or contract. Intending purchasers should not rely on them as statements of representation of fact, but must satisfy themselves by inspection or otherwise as to their accuracy. No person in this firm's employment has the authority to make or give any representation or warranty in respect of the property.

22 Market Street, Pontypridd, CF37 2ST

Tel: 01443 404093 Email: [pontypridd@hoskinsjohnson.co.uk](mailto:pontypridd@hoskinsjohnson.co.uk) [www.hoskinsjohnson.co.uk](http://www.hoskinsjohnson.co.uk)