

4 Glynmynach Street, Pontypridd, CF37 3DT

£115,000

**** No Chain ** Ideal First Time Buy ** Three bedrooms ****

Ideally located for local shops, school, doctors and bus stop in the popular village of Ynysybwl. A bay fronted, mid terraced house comprising of entrance lobby, lounge/diner, kitchen with built in appliances, utility room, three bedrooms and first floor bathroom. There is a paved rear courtyard together with gas combi heating and double glazing.

Excellent opportunity for first time buyers/investors.

No onward chain.

Entrance Hall

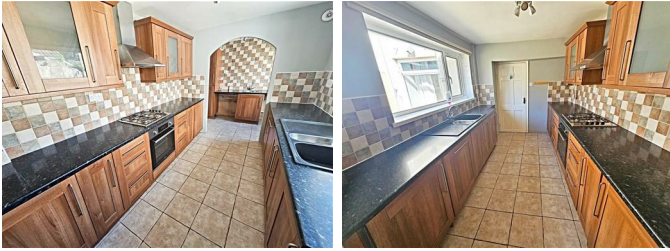
Half glazed entrance door, understairs cupboard, coved ceiling.

Lounge/Diner 24'0" x 12'5" (7.31 x 3.78)



Double glazed bay window to front, double glazed window to rear, two radiators, coved ceiling, fire place with electric fire, staircase to first floor.

Kitchen 10'3" x 7'11" (3.12 x 2.41)



Fitted with a range of base and wall cupboards with tiled splash backs, 1½ bowl sink unit, gas hob and electric oven with extractor hood above, integral dishwasher, fridge and freezer, tiled floor, double glazed window to side, archway to utility room.

Utility Room 7'11" x 5'3" (2.41 x 1.60)



Sink unit, space for washing machine and tumble drier, concealed wall mounted gas combi boiler, radiator, tiled floor, double glazed window and half glazed door to side.

First Floor Landing

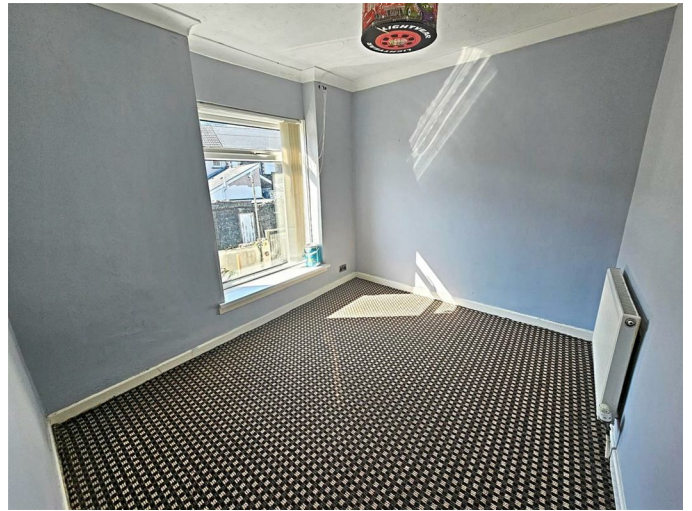
Coved ceiling.

Bedroom 1 12'0" x 9'9" (3.67 x 2.96)



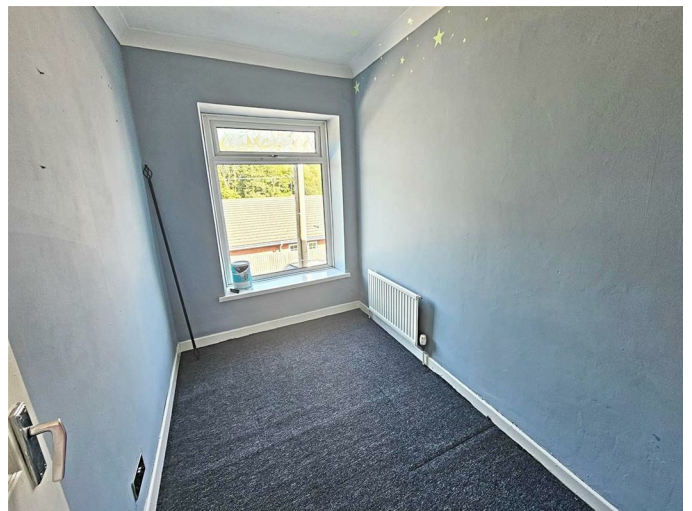
Double glazed window to front, radiator, coved ceiling.

Bedroom 2 10'2" x 8'7" (3.10 x 2.62)



Double glazed window to rear, radiator, coved ceiling.

Bedroom 3 8'11" x 6'0" (2.72 x 1.84)



Double glazed window to front, radiator, coved ceiling.

Bathroom/WC



White three piece suite comprising of panelled bath with shower mixer taps, wc, wash hand basin, tiled walls, radiator, double glazed window to rear.

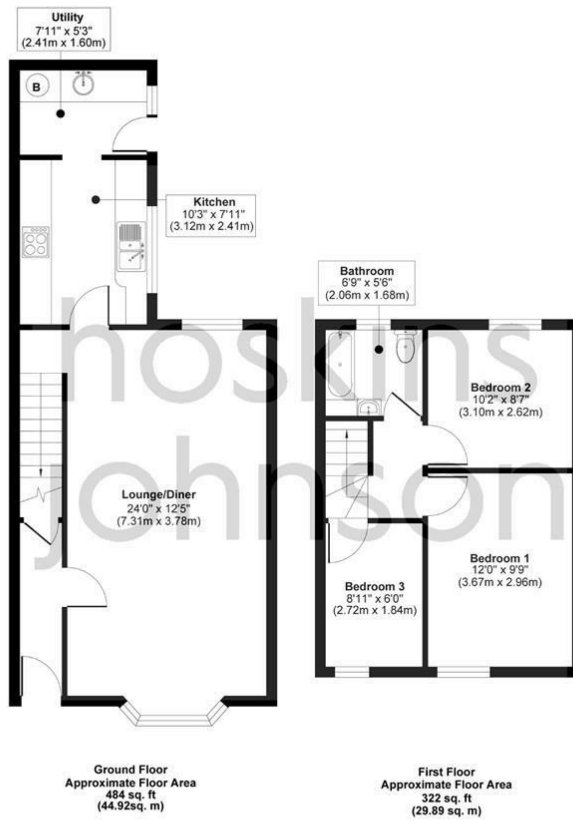
Outside



Enclosed, paved courtyard with storage area and lane access.

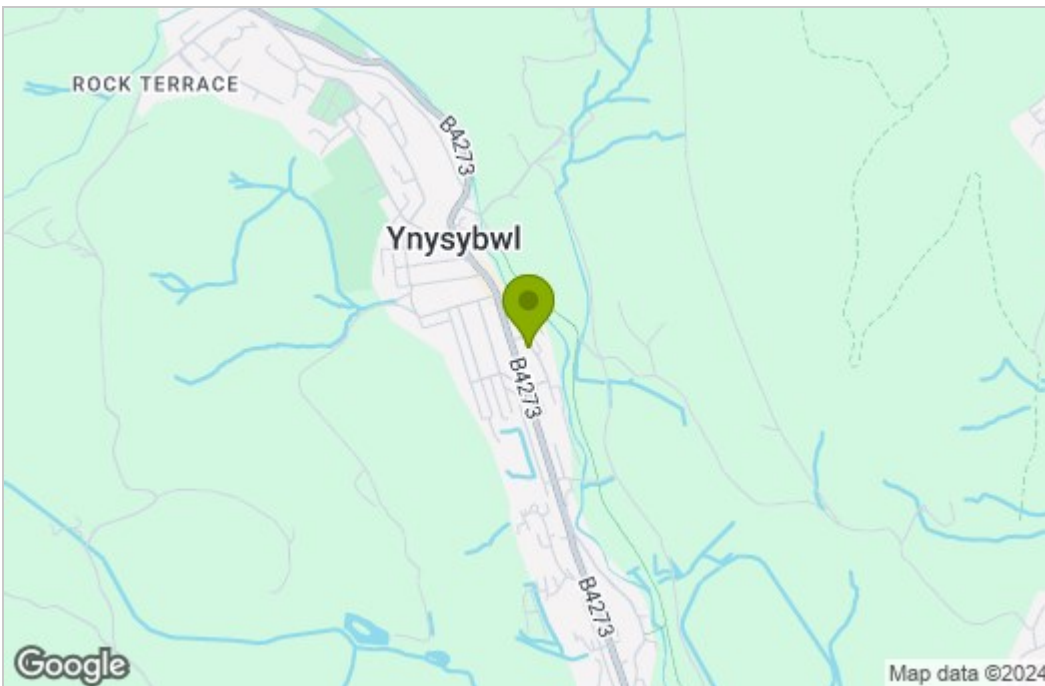
Floor Plan

4 Glynmynach Street

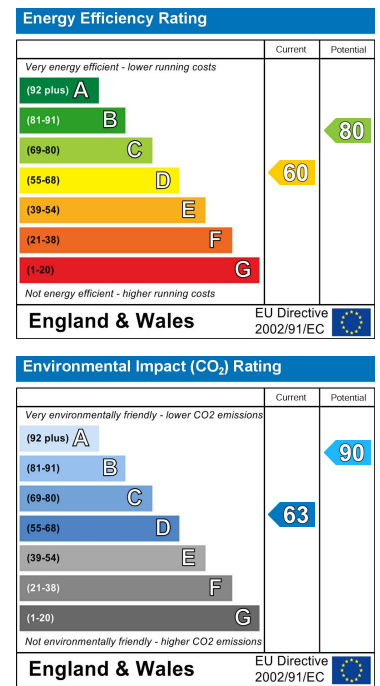


Approx. Gross Internal Floor Area 806 sq. ft / 74.81 sq. m
For illustration purposes only. Measurements are approximate. Not to scale.
Produced by Elements Property

Area Map



Energy Efficiency Graph



These particulars, whilst believed to be accurate are set out as a general outline only for guidance and do not constitute any part of an offer or contract. Intending purchasers should not rely on them as statements of representation of fact, but must satisfy themselves by inspection or otherwise as to their accuracy. No person in this firm's employment has the authority to make or give any representation or warranty in respect of the property.