



14 Heol-Y-Plwyf, Pontypridd, CF37 3HU

£250,000

360 WALK THROUGH TOUR AVAILABLE - TAKE A LOOK INSIDE NOW!

Welcome to this charming villa-style semi-detached house located in the picturesque village of Ynysybwll, Pontypridd. This delightful property boasts a spacious layout with one large reception room, four bedrooms, and two bathrooms, providing ample space for comfortable living.

As you step inside, you are greeted by a warm and inviting atmosphere, perfect for relaxing or entertaining guests. The double bay windows allow natural light to flood the rooms, creating a bright and airy feel throughout the house.

The property features a well-maintained garden offering superb views, providing a tranquil outdoor space to unwind and enjoy the beauty of the surroundings.

Whether you are looking for a family home with plenty of room to grow, or a peaceful retreat to escape the hustle and bustle of city life, this lovely house offers the perfect blend of comfort and style.

Entrance Lobby



Double glazed entrance door, original part tiled walls, mosaic tiled flooring.

Hallway



Half glazed entrance door, radiator, mosaic tiled flooring, original coved ceiling, staircase to first floor.

Lounge/Diner



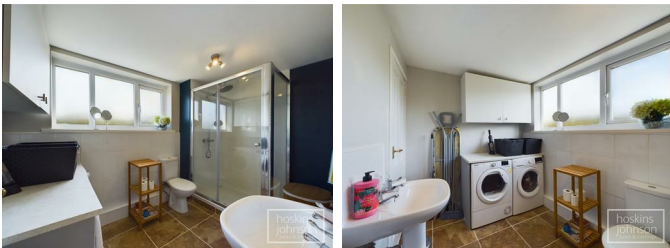
Double glazed bay window to front, double glazed window to front, two radiators, laminated wood flooring, feature panelled wall.

Kitchen 15'1" x 10'1" (4.60 x 3.09)



Modern refitted kitchen with grey/white base and wall cupboards with contrasting work tops and up stands, inset sink and mixer tap, gas hob and electric double oven, space for fridge/freezer, laminated wood flooring, radiator, double glazed window and half glazed door to side.

Utility/Shower Room



Large walk in shower with rainfall shower head and

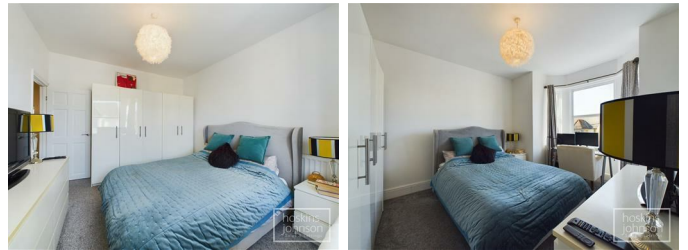
separate hand held shower head, wc, wash hand basin, space for washing machine and tumble drier, tiled floor, part tiled walls, heated towel rail, wall mounted gas combination boiler, double glazed window to rear.

First Floor Landing



Attic access with drop down ladder.

Bedroom 1 11'6" x 11'0" (3.53 x 3.36)



Double glazed bay window to front, radiator.

Bedroom 2 10'9" x 8'11" (3.28 x 2.72)



Double glazed window to rear, radiator.

Bedroom 3 10'2" x 7'1" (3.12 x 2.17)



Double glazed window to side, radiator.

Bedroom 4 8'5" x 5'5" (2.59 x 1.67)



Double glazed window to front, radiator.

Bathroom



Modern white three piece suite comprising panelled bath with shower mixer taps, wc, wash hand basin, part tiled walls, tile effect laminated wood flooring, heated towel rail, ceiling spotlights, extractor fan.

Outside

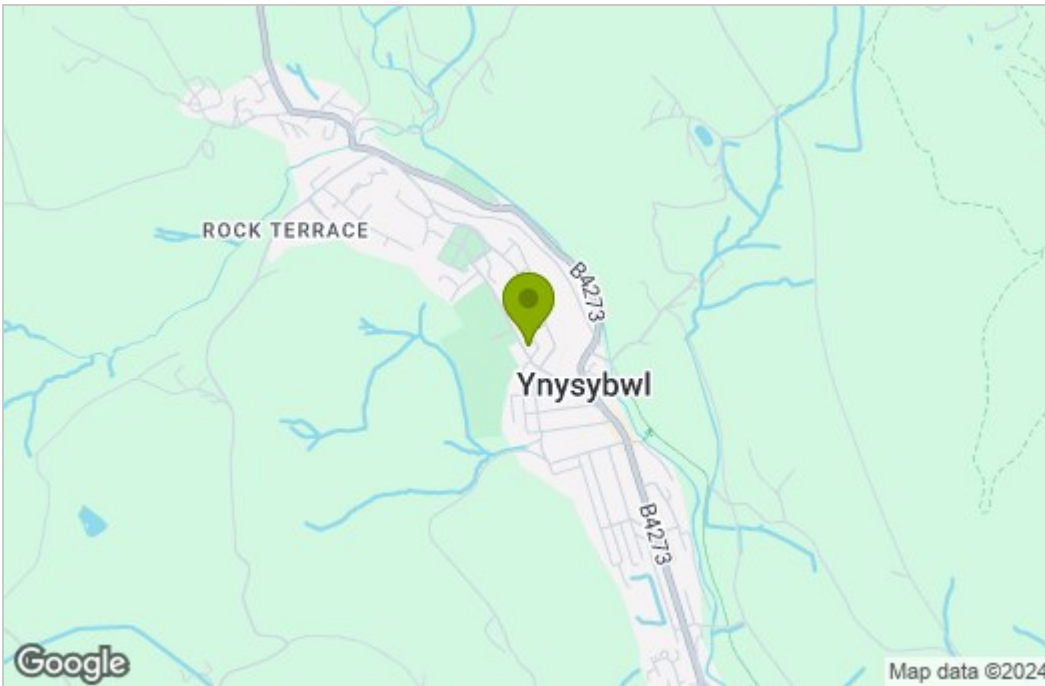


Attractive gravelled front garden.
Side pedestrian access leads to a lovely rear garden with paved/decked seating with superb views, lower paved seating with lawns, basement storage and rear access.

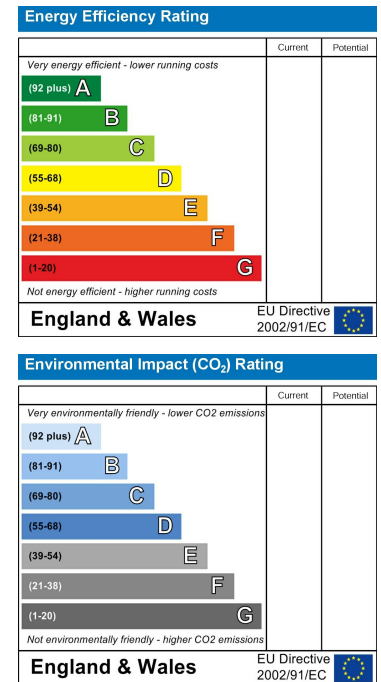
Floor Plan



Area Map



Energy Efficiency Graph



These particulars, whilst believed to be accurate are set out as a general outline only for guidance and do not constitute any part of an offer or contract. Intending purchasers should not rely on them as statements of representation of fact, but must satisfy themselves by inspection or otherwise as to their accuracy. No person in this firm's employment has the authority to make or give any representation or warranty in respect of the property.

22 Market Street, Pontypridd, CF37 2ST

Tel: 01443 404093 Email: pontypridd@hoskinsjohnson.co.uk www.hoskinsjohnson.co.uk