



21 Nantgwyn Street, Tonypany, CF40 1LS

£195,000

Welcome to Nantgwyn Street, Tonypany - a charming location that could soon be your new address! This end terrace house offers not just a property, but a lifestyle. With a spacious lounge perfect for relaxing evenings, four bedrooms providing ample space for the whole family, and two bathrooms for added convenience, this home is designed for comfortable living.

The large bay frontage adds character and charm to the property, making it stand out in the neighbourhood. The fitted kitchen with appliances is a dream for those who love to cook and entertain. Imagine whipping up delicious meals in this lovely space!

Parking is always a breeze with space for two vehicles in the large garage/workshop and also for those who need extra storage or enjoy DIY projects. Whether you're looking for a family home or a place to settle down, this property has it all.

Don't miss out on the opportunity to make this house your home. Book a viewing today and step into the future you've been dreaming of!

Entrance Hall



Half glazed entrance door, radiator, coved ceiling, tiled floor, staircase to first floor, understairs storage cupboard, door leading into kitchen/breakfast room.

Lounge



Double glazed bay window to front, two radiators, coved ceiling, fireplace with fitted electric fire, glazed double doors leading into kitchen/breakfast room.

Kitchen/Breakfast Room



An excellent size kitchen/breakfast room with ample space for table and chairs and comprising base and wall cupboards with tiled splash backs, stainless steel sink unit, gas hob and electric double oven with extractor hood above, integral fridge, freezer and dishwasher, radiator, coved ceiling, double glazed window and door to rear.

Utility Room

Space for washing machine and tumble drier, wall mounted gas combination boiler, coved ceiling.

Shower Room



Tiled mains shower cubicle, wc, wash hand basin, radiator, coved ceiling, double glazed window to rear.

First Floor Landing



Coved ceiling, attic access.

Bedroom 1



Double glazed window to rear, radiator, coved ceiling, attic access.

Bedroom 2



Double glazed window to front, radiator, coved ceiling.

Bedroom 3



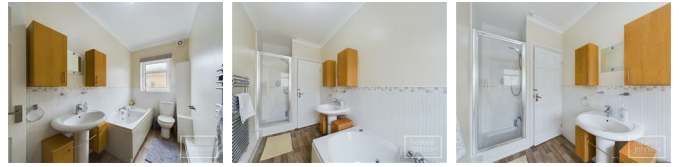
Double glazed skylight, radiator, coved ceiling, laminated wood flooring.

Bedroom 4



Double glazed window to front, radiator, coved ceiling, laminated wood flooring.

Bathroom



Modern white suite comprising double ended bath, wc, wash hand basin, tiled mains shower cubicle, part tiled walls, heated towel rail, coved ceiling, wood effect vinyl flooring, double glazed window to rear.

Outside

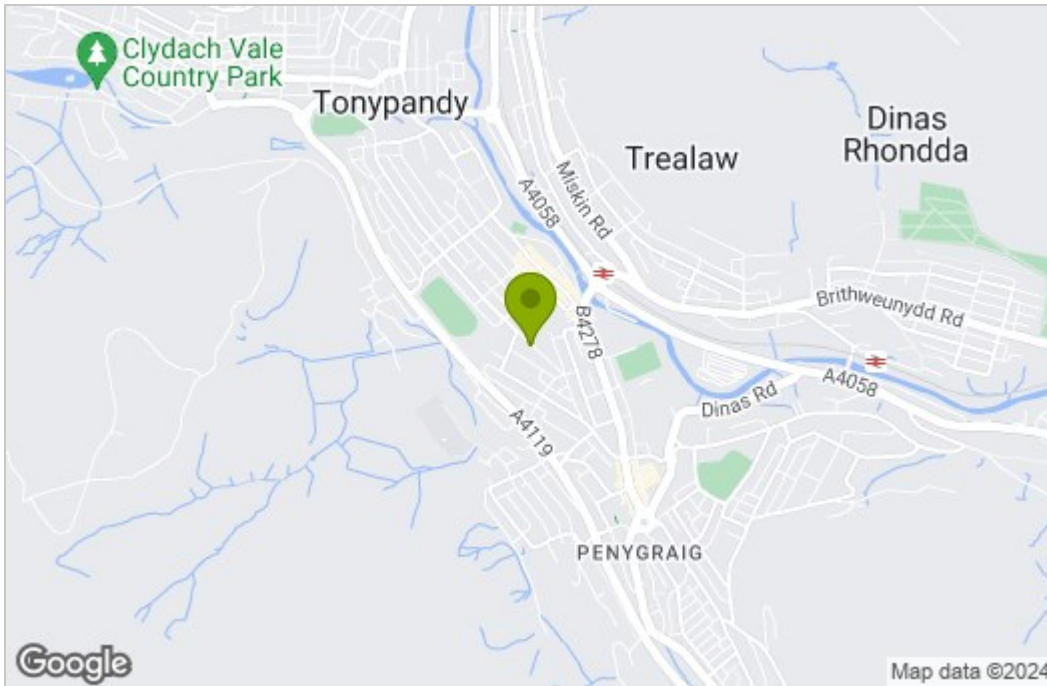


Elevated paved forecourt
Stepped, paved garden with large garage/workshop with power and light.

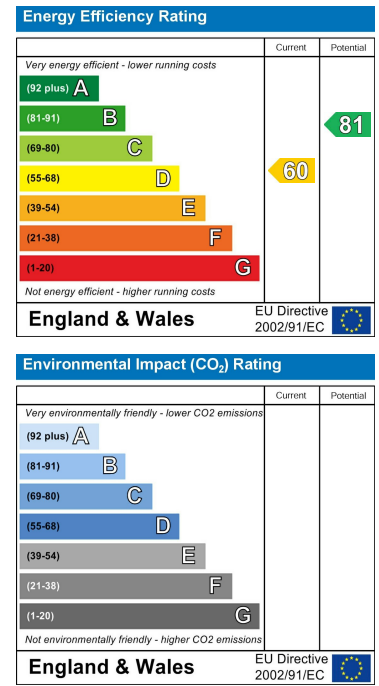
Floor Plan



Area Map



Energy Efficiency Graph



These particulars, whilst believed to be accurate are set out as a general outline only for guidance and do not constitute any part of an offer or contract. Intending purchasers should not rely on them as statements of representation of fact, but must satisfy themselves by inspection or otherwise as to their accuracy. No person in this firm's employment has the authority to make or give any representation or warranty in respect of the property.

22 Market Street, Pontypridd, CF37 2ST

Tel: 01443 404093 Email: pontypridd@hoskinsjohnson.co.uk www.hoskinsjohnson.co.uk