



25 Woodland Terrace, Pontypridd, CF37 1EA

£240,000

360 WALK THROUGH TOUR AVAILABLE

Nestled in the charming Woodland Terrace of Maesycoed, Pontypridd, this delightful mid-terrace house is a true gem waiting to be discovered. Boasting one reception room, three cosy bedrooms, and a modern bathroom with a separate shower, this property offers comfort and style in equal measure.

Step outside into the pleasant garden, where you'll find inviting seating areas, a charming pergola, raised beds for your green thumb, and convenient lane access. Perfect for enjoying a cup of tea on a sunny afternoon or hosting a barbecue with friends and family.

Convenience is key with this property, as it is ideally located close to amenities, schools, the town centre, and excellent transport links. Say goodbye to long commutes and enjoy everything you need right at your doorstep.

Inside, you'll discover a utility room and a ground floor WC, adding practicality to the home. The large lounge/diner is a versatile space, complete with a stylish media wall, perfect for relaxing evenings or entertaining guests.

Don't miss out on the opportunity to make this charming house your new home. Book a viewing today.

Entrance Hall



Double glazed entrance door, radiator, coved ceiling with inset spotlights, quarry tiled flooring, staircase to first floor.

Lounge/Diner 22'0" x 10'8" (6.73 x 3.26)



Double glazed bay window to front with concealed storage, media wall with inset down lighting and space for fire, radiator, coved ceiling.

Breakfast Area 10'5" x 6'10" (3.18 x 2.10)



Double glazed french doors leading out to rear garden, radiator, wood effect vinyl flooring, glazed roof lantern, open plan to kitchen.

Kitchen 12'4" x 8'7" (3.76 x 2.63)



Newly fitted with a range of matching base and wall cupboards with oak effect work tops, stainless steel sink unit and mixer tap, ceramic hob with extractor hood above, double oven, integral fridge and freezer, small breakfast bar, concealed understairs storage with automatic lighting, ceiling spotlights.

Lobby



Wood effect vinyl flooring, access to utility and wc.

Utility Room



Stainless steel sink unit, base and wall cupboards, space for washing machine and tumble drier, concealed gas combination boiler, radiator, ceiling spotlights, panelled walls, double glazed window to rear.

Cloaks/WC

WC, panelled walls, double glazed window to rear.

First Floor Landing



Attic access.

Bedroom 1 12'9" x 8'0" (3.89 x 2.44)



Double glazed window to front, radiator.

Bedroom 2 10'6" x 8'8" (3.22 x 2.65)



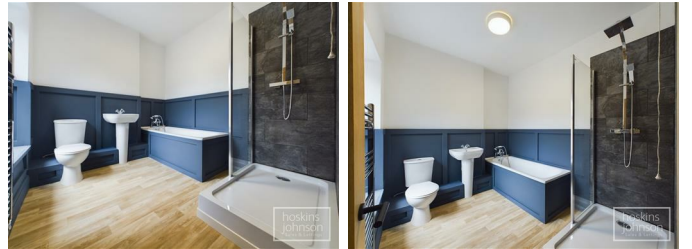
Double glazed window to rear, radiator.

Bedroom 3 9'6" x 7'3" max (2.92 x 2.23 max)



Double glazed window to front, radiator, built in cupboard/wardrobe.

Bathroom/WC



Newly fitted white suite comprising panelled bath with shower mixer tap, wc, wash hand basin, walk in shower with rainfall shower head and separate hand held shower attachment, part panelled walls, chrome heated towel rail, wood effect vinyl flooring, double glazed window to rear.

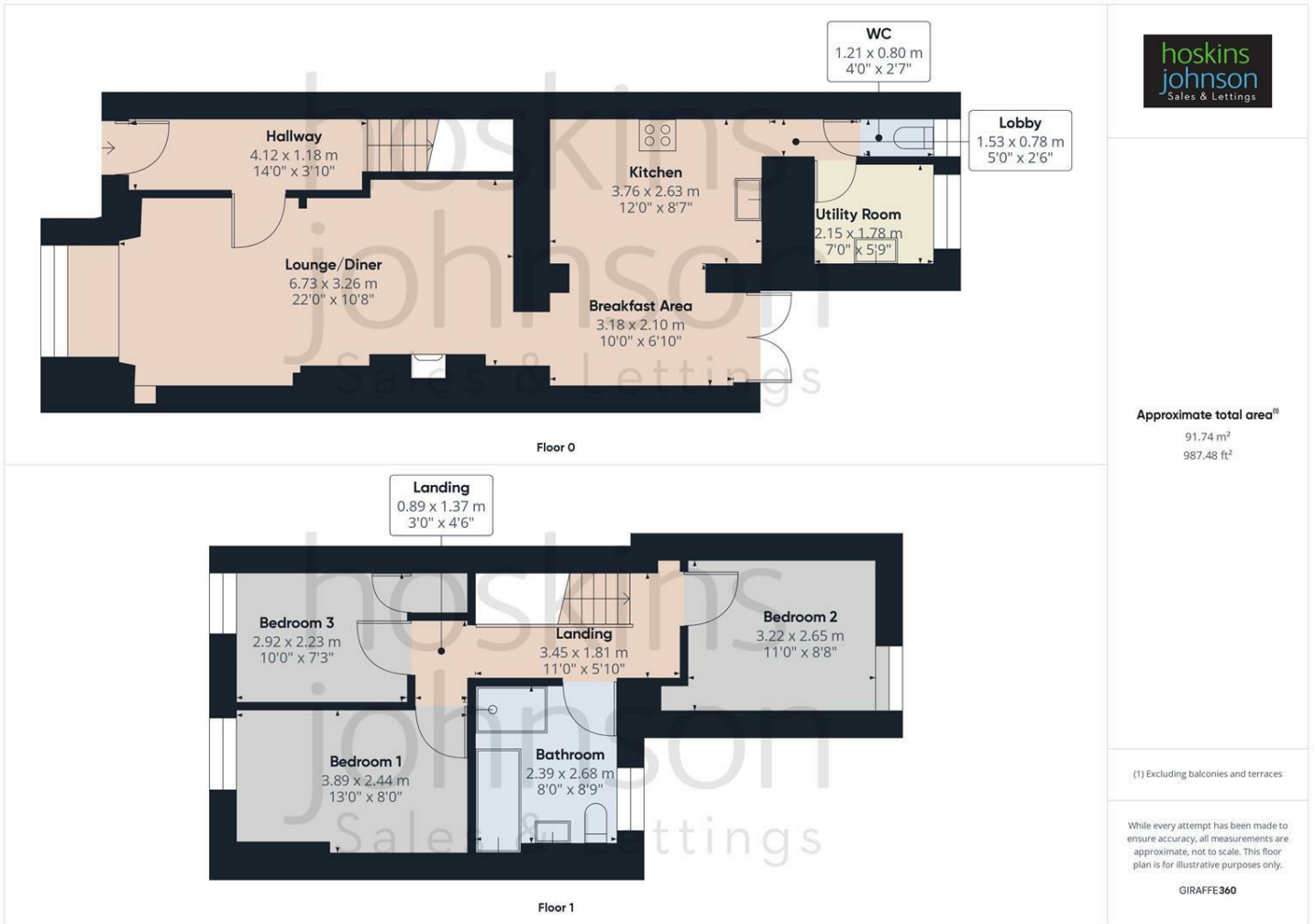
Outside



Small forecourt.

Pleasant rear garden with decked/gravelled seating areas with overhead pergola, raised beds and lane access.

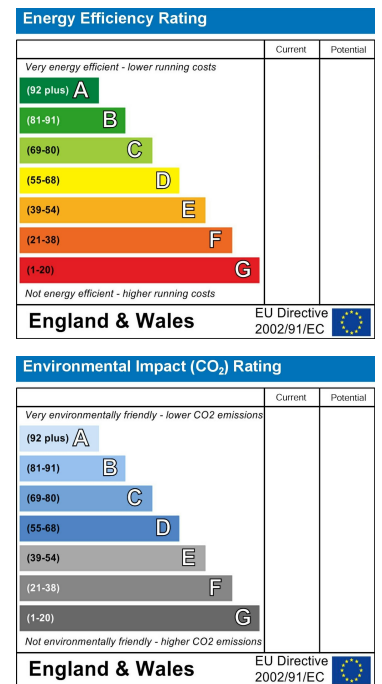
Floor Plan



Area Map



Energy Efficiency Graph



These particulars, whilst believed to be accurate are set out as a general outline only for guidance and do not constitute any part of an offer or contract. Intending purchasers should not rely on them as statements of representation of fact, but must satisfy themselves by inspection or otherwise as to their accuracy. No person in this firm's employment has the authority to make or give any representation or warranty in respect of the property.

22 Market Street, Pontypridd, CF37 2ST

Tel: 01443 404093 Email: pontypridd@hoskinsjohnson.co.uk www.hoskinsjohnson.co.uk