



## 58 Bonvilston Road, Pontypridd, CF37 4RE

**£155,000**

360 WALK THROUGH TOUR AVAILABLE

**\*\* Ideal First Time/Family Purchase \*\* Three Bedrooms \*\* Modern Kitchen & Diner \*\***

Of particular interest to first time buyers and families.

A well presented and extended mid terraced house located in the popular area of Trallwn, close to local shops, schools, Town Centre & transport links.

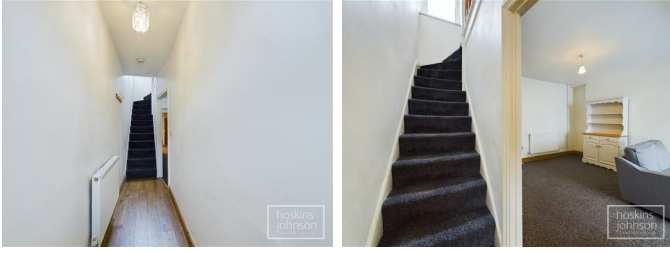
Comprising entrance hall, large lounge, modern kitchen with oven & hob, open plan diner, bathroom and three bedrooms.

There is a paved garden with lane access together with double glazing and gas central heating.

Offered with no onward chain.

Recommended.

## Entrance Hall



Panelled entrance door, radiator, laminated wood flooring, staircase to first floor.

## Lounge 20'1" x 12'6" (6.13 x 3.83)



Double glazed window to front, two radiators, fireplace with electric fire.

## Diner 9'8" x 7'11" (2.97 x 2.43)



Radiator, laminated wood flooring, ceiling spotlights, understairs storage cupboard, open plan to kitchen

## Kitchen 12'6" x 6'0" (3.82 x 1.83)



Fitted with a range of modern base and wall cupboards with tiled splash backs, stainless steel sink unit, gas hob and electric oven with extractor hood above, space for washing machine, dishwasher and fridge/freezer, ceiling spotlights, wood effect tiled flooring, double glazed window and half glazed door to rear.

## Bathroom



Modern three piece suite in white comprising P shaped shower bath with mains shower, wc, wash

hand basin, part tiled walls, chrome heated towel rail, airing cupboard with combination boiler, two double glazed windows to rear.

## First Floor Landing



Double glazed window to rear.

## Bedroom 1 11'5" x 9'3" (3.50 x 2.84)



Double glazed window to front, radiator.

## Bedroom 2 9'8" x 8'3" (2.96 x 2.53)



Double glazed window to rear, radiator.

## Bedroom 3 8'5" x 5'7" (2.57 x 1.72)



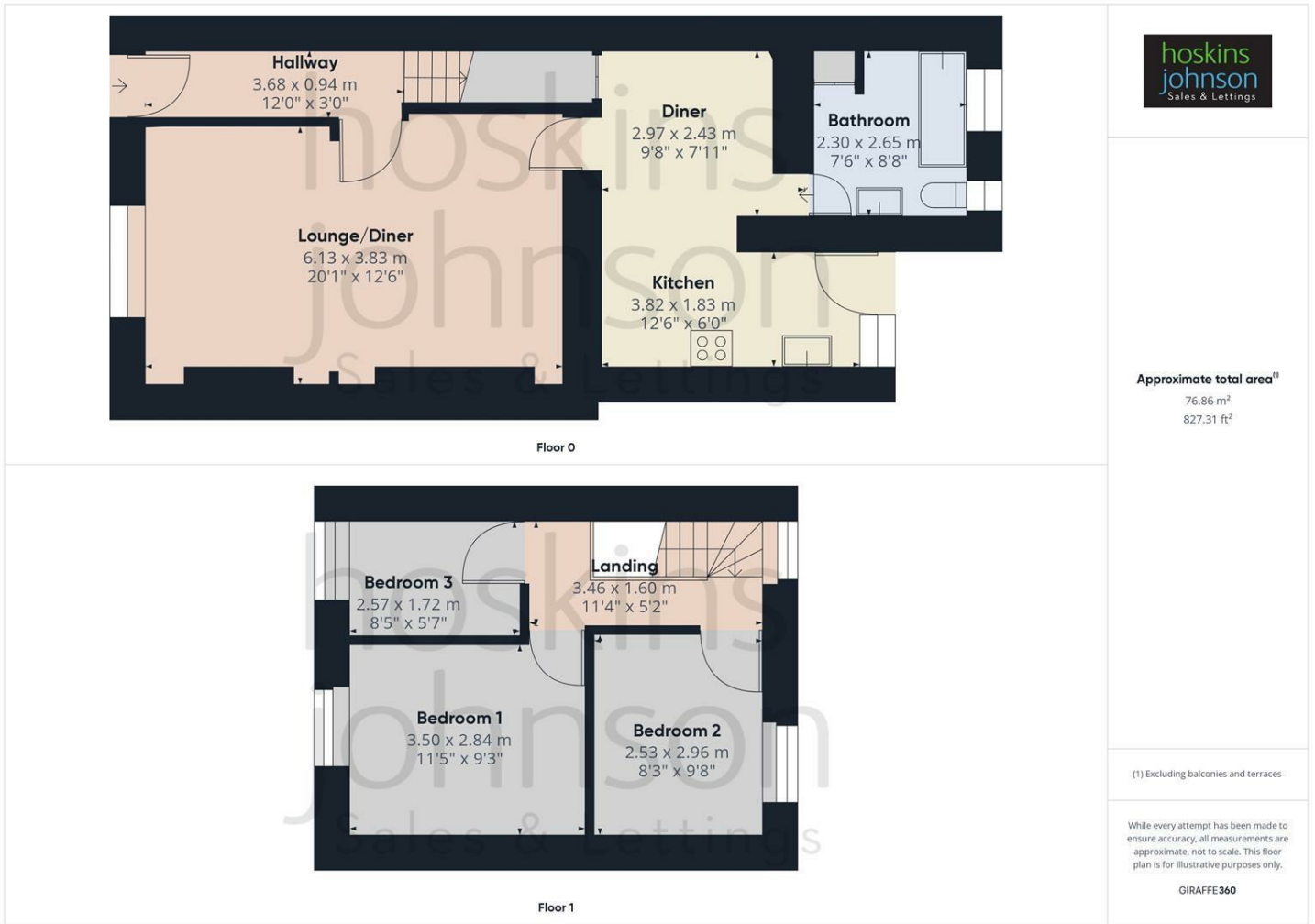
Double glazed window to front, radiator, attic access.

## Outside



Paved garden with lane access.

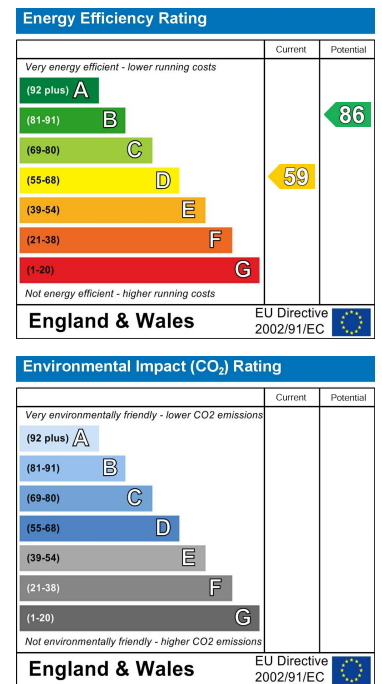
## Floor Plan



## Area Map



## Energy Efficiency Graph



These particulars, whilst believed to be accurate are set out as a general outline only for guidance and do not constitute any part of an offer or contract. Intending purchasers should not rely on them as statements of representation of fact, but must satisfy themselves by inspection or otherwise as to their accuracy. No person in this firm's employment has the authority to make or give any representation or warranty in respect of the property.

22 Market Street, Pontypridd, CF37 2ST

Tel: 01443 404093 Email: [pontypridd@hoskinsjohnson.co.uk](mailto:pontypridd@hoskinsjohnson.co.uk) [www.hoskinsjohnson.co.uk](http://www.hoskinsjohnson.co.uk)