



8 Graig-Yr-Helfa Road, Pontypridd, CF37 4AR

£80,000

**** Purpose Built First Floor Flat ** Close to Amenities, Train Station & A470 ** No Onward Chain ****
Located in the popular area of Glyntaff, close to many amenities and minutes from train station and main roads.

This first floor flat comprises entrance hall, lounge, kitchen with oven & hob, double bedroom and bathroom.
There is a small garden area together with double glazing and gas central heating.
Offered with no onward chain.

Ground Floor

Entrance Hall

Panelled entrance door, staircase to first floor.

First Floor

Landing

Double glazed window to side and rear, radiator, storage cupboard.

Lounge 15'8" x 12'9" (4.80 x 3.90)



Double glazed window to front, radiator, coved ceiling.

Kitchen 10'6" x 8'2" (3.21 x 2.50)



Fitted base and wall cupboards, stainless steel sink unit, electric oven and hob, space for washing machine, radiator, cupboard housing wall mounted gas combination boiler, double glazed window to rear.

Bedroom 11'11" x 11'1" (3.64 x 3.38)



Double glazed window to front, radiator.

Bathroom



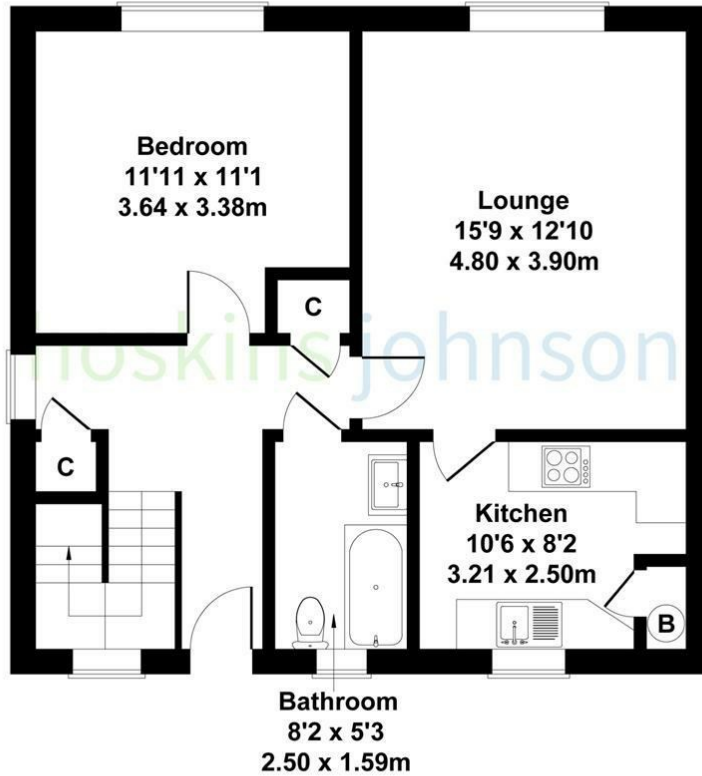
White three piece comprising panelled bath with shower mixer taps, wc, wash hand basin, part tiled walls, radiator, attic access, double glazed window to rear.

Outside

Garden area to rear.

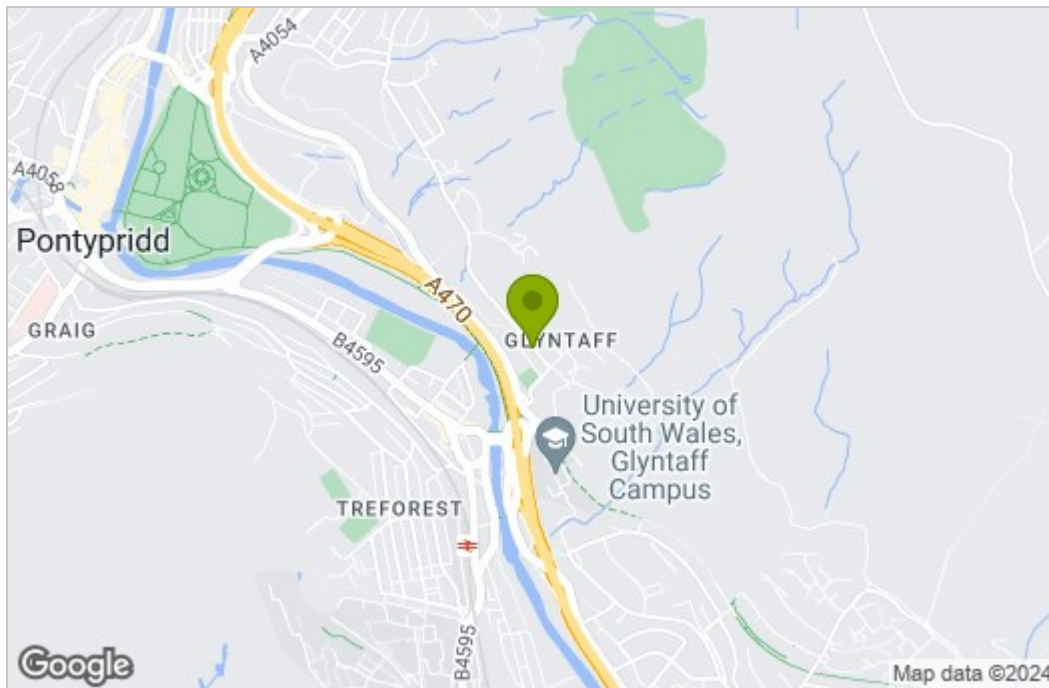
8 Graig Yr Helfa Road

Approximate Gross Internal Area
624 sq ft - 58 sq m

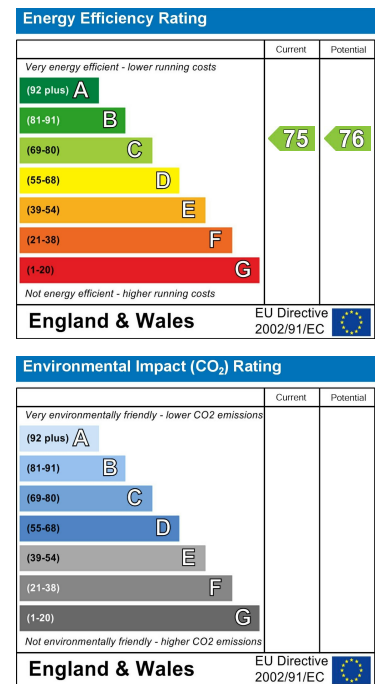


Not to Scale. Produced by The Plan Portal 2024
For Illustrative Purposes Only.

Area Map



Energy Efficiency Graph



These particulars, whilst believed to be accurate are set out as a general outline only for guidance and do not constitute any part of an offer or contract. Intending purchasers should not rely on them as statements of representation of fact, but must satisfy themselves by inspection or otherwise as to their accuracy. No person in this firm's employment has the authority to make or give any representation or warranty in respect of the property.