

34 Lanelay Terrace, Pontypridd, CF37 1ER

£190,000

360 WALK THROUGH TOUR AVAILABLE

**** Bay Fronted Mid terrace ** Three Bedrooms ** Spacious Accommodation ****

Welcome to Lanelay Terrace, Maesycod, Pontypridd - a charming location for this delightful mid-terrace house boasting 3 bedrooms. This property is a perfect blend of comfort and style, offering a cosy yet spacious living space for you and your family.

Located in the heart of Maesycod, you'll find yourself surrounded by a friendly community and convenient amenities. Whether you fancy a leisurely stroll or a quick trip to the local shops, everything you need is just a stone's throw away.

Comprising Entrance hall, lounge, dining room, kitchen, utility room, bathroom and three bedrooms.

There is a paved forecourt and a terraced garden with garage and lane access.

Don't miss the opportunity to make this house your home. With its desirable location and comfortable living spaces, this property on Lanelay Terrace is sure to capture your heart.

Book a viewing today.

Storm Porch

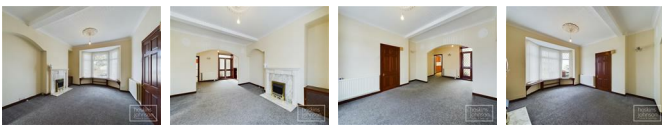


Hallway



Panelled entrance door, radiator, staircase to first floor.

Lounge 15'2" x 12'9" (4.63 x 3.91)



Double glazed bay window to front, radiator, coved ceiling, fire surround with electric fire, open plan to dining room.

Dining Room 11'9" x 8'1" (3.60 x 2.47)



Glazed double doors leading into utility room, radiator, coved ceiling.

Kitchen 13'9" x 9'4" (4.20 x 2.86)



Fitted with matching base and wall cupboards with tiled splash backs, stainless steel sink unit, gas cooker point with extractor hood above, tiled floor, radiator, window and door leading into utility room.

Utility Room 10'4" x 5'5" (3.16 x 1.67)



Stainless steel sink unit, space for washing machine, double glazed window and door to rear.

Bathroom/WC



White three piece suite comprising panelled bath with shower mixer taps, wc, wash hand basin, tiled walls and floor, radiator, double glazed window to side.

First Floor Landing



Attic access.

Bedroom 1 16'2" x 11'6" (4.93 x 3.52)



Two double glazed windows to front, radiator, covered ceiling.

Bedroom 2 10'4" x 9'1" (3.15 x 2.77)



Double glazed window to rear, radiator, covered ceiling.

Bedroom 3 12'1" x 9'4" (3.69 x 2.85)



Double glazed window to rear, radiator, wall mounted gas boiler and airing cupboard.

Outside



Paved forecourt.

Terraced rear garden with garage and lane access.

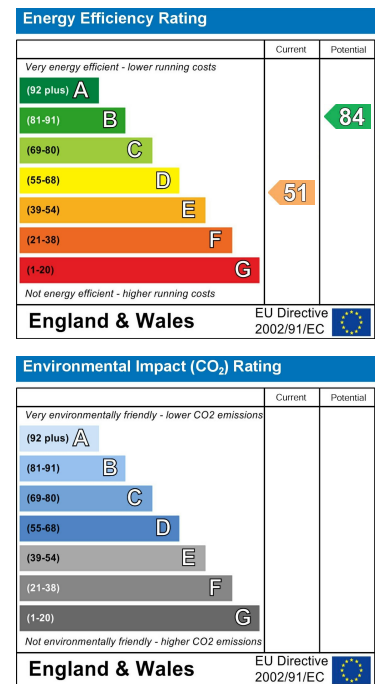
Floor Plan



Area Map



Energy Efficiency Graph



These particulars, whilst believed to be accurate are set out as a general outline only for guidance and do not constitute any part of an offer or contract. Intending purchasers should not rely on them as statements of representation of fact, but must satisfy themselves by inspection or otherwise as to their accuracy. No person in this firm's employment has the authority to make or give any representation or warranty in respect of the property.

22 Market Street, Pontypridd, CF37 2ST

Tel: 01443 404093 Email: pontypridd@hoskinsjohnson.co.uk www.hoskinsjohnson.co.uk