



21 Howell Street, Pontypridd, CF37 4NR

£160,000

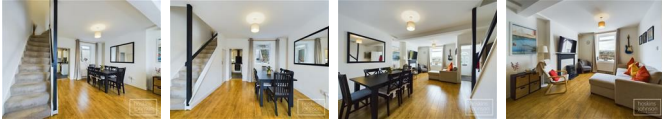
****360 WALK THROUGH TOUR AVAILABLE ****

This inviting 72.0 square meter, two-story property captures the perfect balance of style and comfort. As you enter on the ground floor through the entrance lobby you are lead seamlessly into the inviting lounge/diner, ideal for downtime and entertaining. Then onto a well-equipped kitchen which features both an electric oven and gas hob. Ascending to the first floor, you will find a generously spaced bathroom, boasting both a walk-in shower cubicle and a bath for moments of relaxation . The property also offers 3 bedrooms that you can adjust according to your lifestyle. Externally the property boasts a good sized garage to the rear of the elevated garden. Situated in a convenient location, offering a variety of shops and schools. Plus, public transport is easily accessible, ensuring easy and quick commutes. This property definitely makes an ideal home for first time buyers, buy to let investors and families.

Entrance lobby 6'5" x 3'2" (1.97 x 0.98)

Half glazed entrance door

Lounge/diner 20'10" x 15'2" (6.36 x 4.63)



Double glazed windows to front and rear, 2 radiators, staircase to first floor, laminate flooring, under stairs storage cupboard

Kitchen 9'1" x 8'4" (2.79 x 2.56)



Modern wall and base cupboards, electric oven, gas hob with extractor fan above, stainless steel sink unit, space for washing machine and fridge freezer, wall mounted combi boiler, tiled floor, coved ceiling, double glazed window and half glazed door to rear.

Landing 10'11" x 5'4" (3.35 x 1.64)



Attic access, coved ceiling.

Bathroom 8'4" x 8'0" (2.56 x 2.44)



Contemporary bathroom suite comprising panelled bath, wc, wash hand basin, walk in shower cubicle with electric shower unit, vinyl wood effect flooring, radiator, storage cupboard, double glazed window to rear.

Bedroom 1 12'10" x 9'0" (3.93 x 2.76)



Double glazed window to front, radiator, coved ceiling

Bedroom 2 7'10" x 7'7" (2.40 x 2.32)



Double glazed window to rear, radiator, coved ceiling

Bedroom 3 9'6" x 5'6" (2.92 x 1.70)



Double glazed window to front

Outside

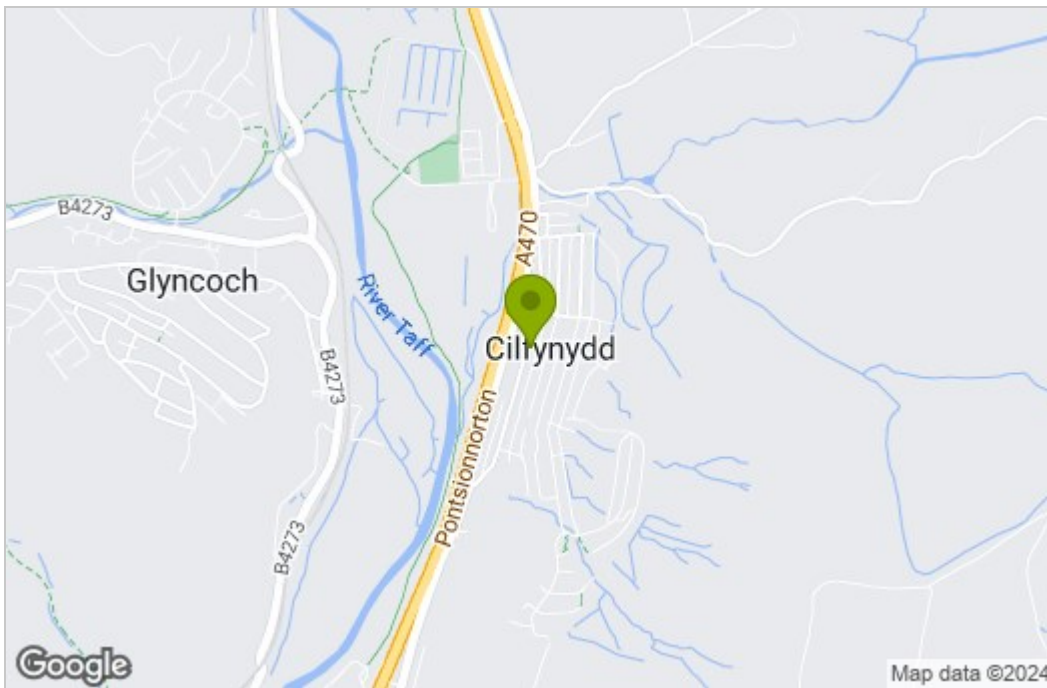


Elevated garden, gravelled area with access to garage.

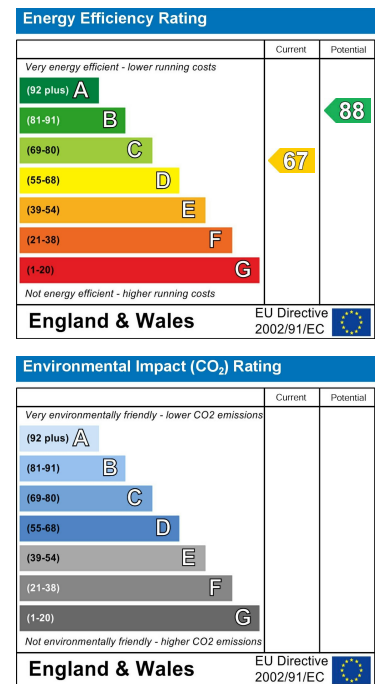
Floor Plan



Area Map



Energy Efficiency Graph



These particulars, whilst believed to be accurate are set out as a general outline only for guidance and do not constitute any part of an offer or contract. Intending purchasers should not rely on them as statements of representation of fact, but must satisfy themselves by inspection or otherwise as to their accuracy. No person in this firm's employment has the authority to make or give any representation or warranty in respect of the property.

22 Market Street, Pontypridd, CF37 2ST

Tel: 01443 404093 Email: pontypridd@hoskinsjohnson.co.uk www.hoskinsjohnson.co.uk