

350A Dewsbury Rd Leeds LS11 7BU



ASKING PRICE: £199,000

Discover an exceptional opportunity with this spacious and modernised 4-bedroom terraced home, perfectly suited for both first-time buyers and investors. With its large rooms, contemporary finishes, and excellent location, this property offers great value for first-time buyers looking for a comfortable home with future potential.

For investors, the property offers excellent rental yield potential,



Key Details

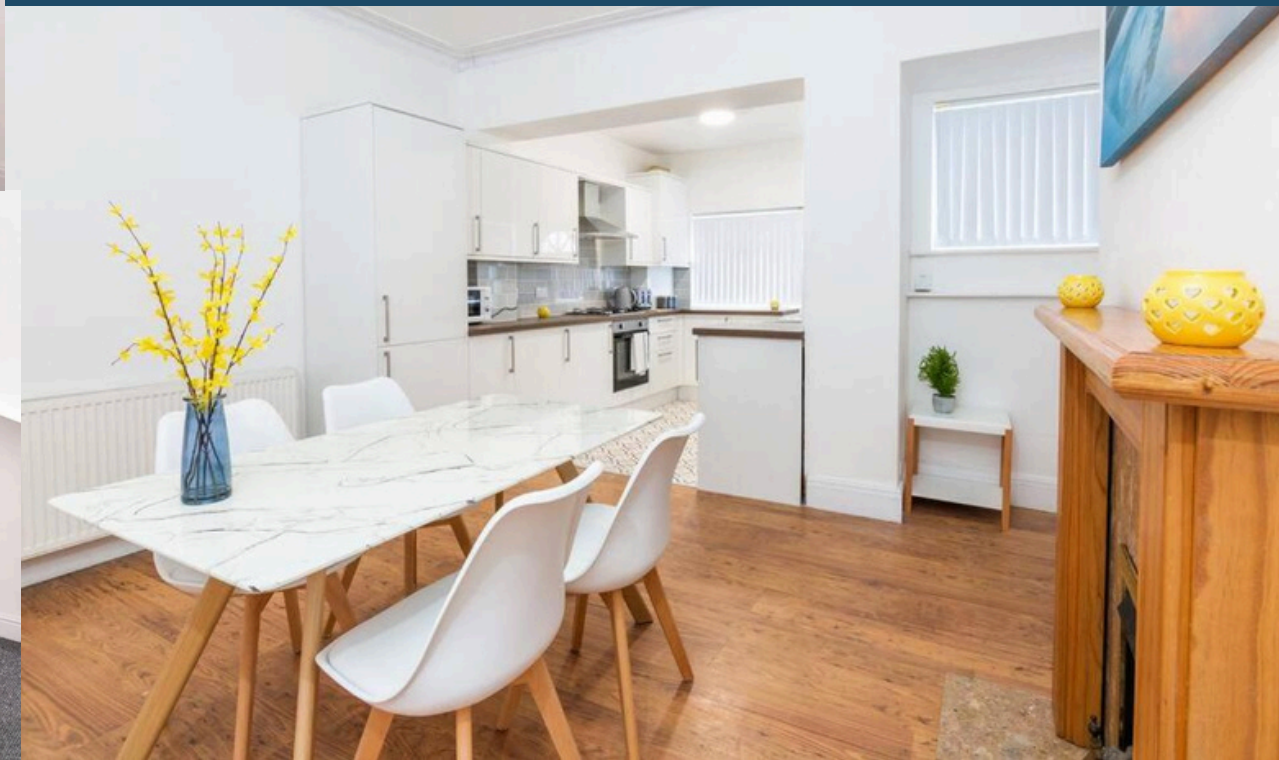
- Property Size: 1,625 sq. ft (151 sq. m)
- Bedrooms: 4
- Bathrooms: 1
- Investment Type: Refurbished, high-yield opportunity
- Windows: Double-glazed
- Location: Close to local amenities
- Ideal for first-time buyers
- Great investment for long-term rental





Key Features

- Refurbished & Modernised
- Double-Glazed Windows
- Energy-efficient & low maintenance
- Close to Local Amenities
- Spacious Layout
- Ideal for families or multiple tenants
- High Demand Rental Area
- Attractive for long-term investment





Score	Energy rating	Current	Potential
92+	A		
81-91	B		
69-80	C		
55-68	D		68 D
39-54	E	52 E	
21-38	F		
1-20	G		



CONTACT US



+44 7368 451100
info@ndtpropertyconsultants.org



Unit B Roseville Rd, Leeds LS8 5DR