 RDR DASSAUR

47 Lelleford Close, Long Lawford
Rugby

 RDR DASSAUR

£470,000



47 Lelleford Close

Long Lawford, Rugby

Exceptional 4-bed detached house in Lelleford Close, Bloor Homes 2017 build with spacious kitchen, gardens, garage & high-end features. In sought-after Long Lawford location.

Council Tax band: E

Tenure: Freehold

- Detached family home
- Private entrance: Secluded front access away from the road and footpath
- Driveway for multiple cars and detached garage
- Secure Garage: Equipped with a retractable door, power access, and EV charger
- Home office and ground floor WC
- All bedrooms fitted with sliding SpacePro wardrobes
- Built by Bloor homes in 2017



Kitchen

14' 1" x 14' 5" (4.30m x 4.40m)

Lounge

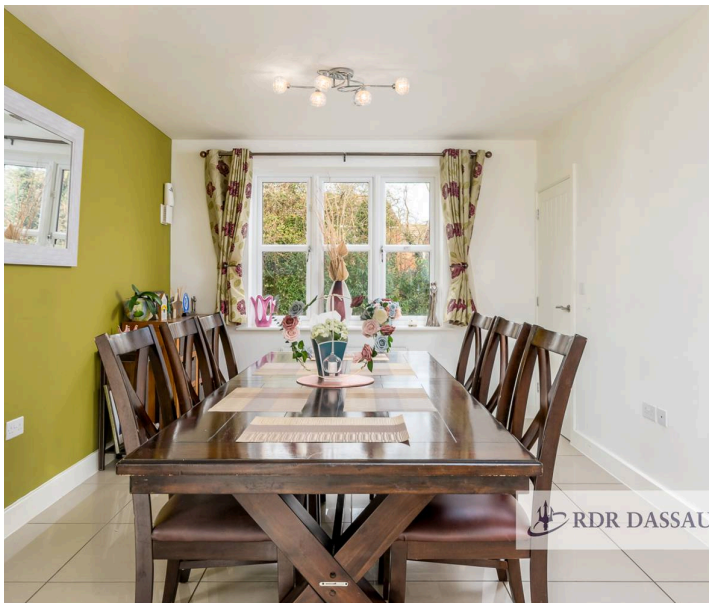
11' 10" x 14' 5" (3.60m x 4.40m)

Dining area

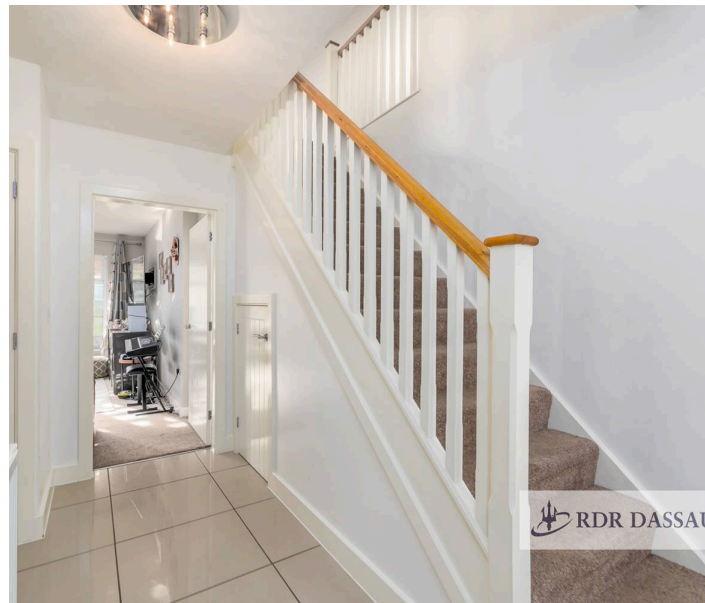
10' 10" x 14' 9" (3.30m x 4.50m)

Bathroom

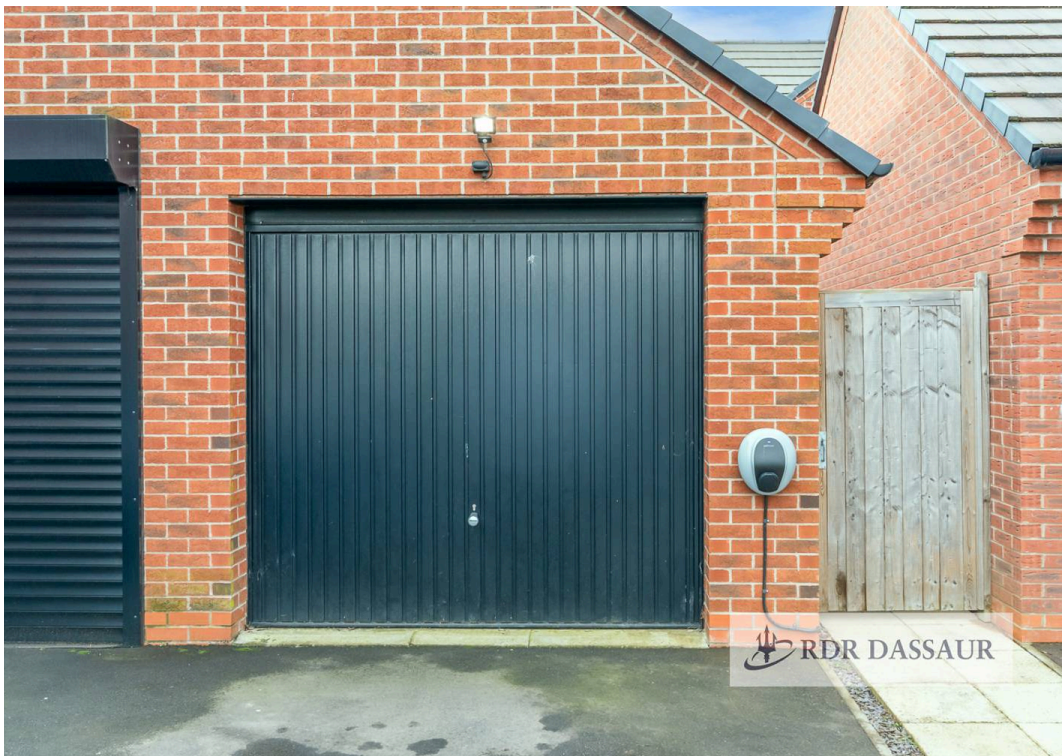
 RDR DASSAUR

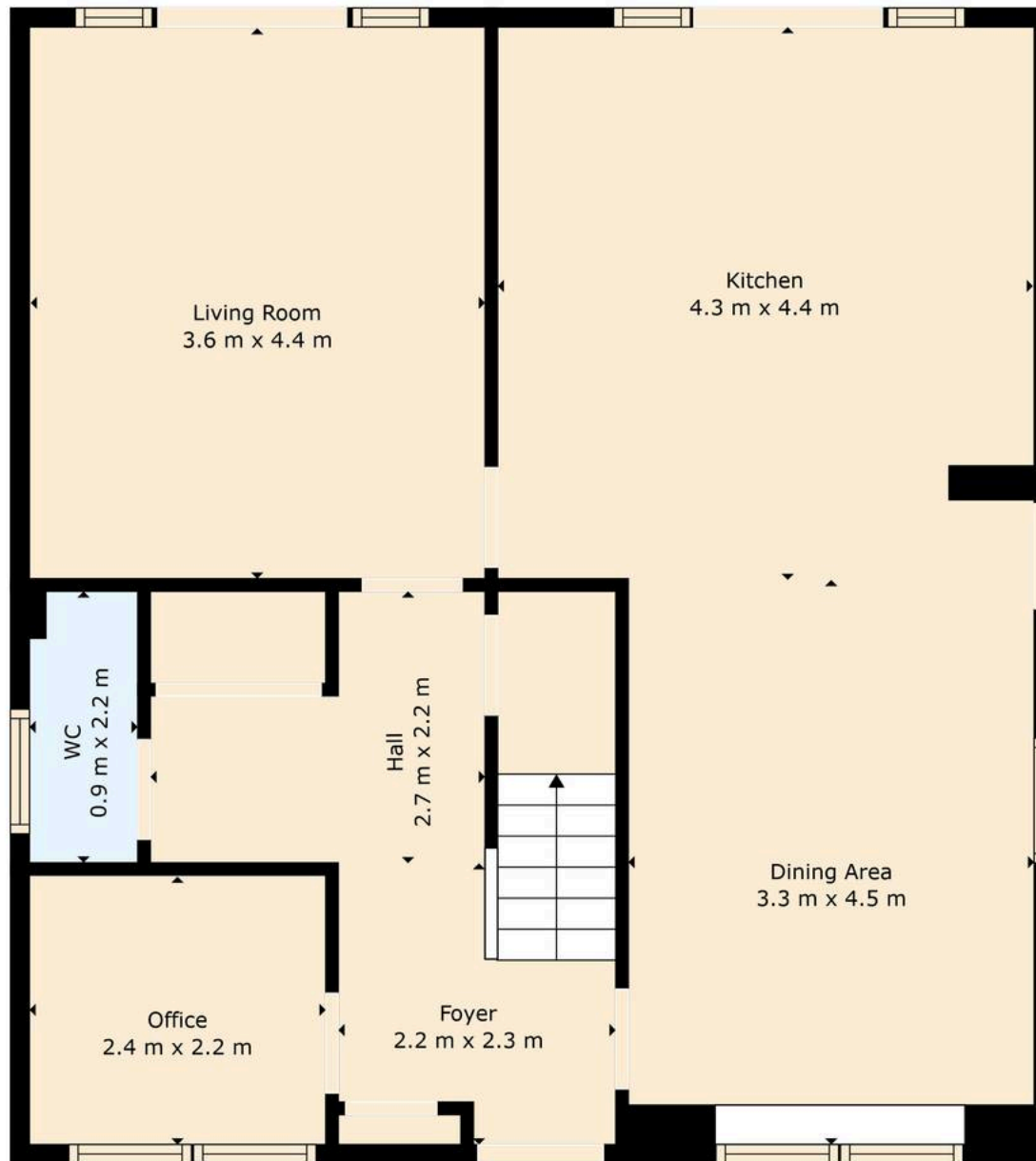


 RDR DASSAUR



 RDR DASSAUR





TOTAL: 139 m²
FLOOR 1: 73 m², FLOOR 2: 66 m²

Floor Plan Created By Cubicasa App. Measurements Deemed Highly Reliable But Not Guaranteed.



RDR Dassaur estate agents

Unit 2 Nelson Dale Wharf Street, Warwick - CV34 5LB

01926268989

Admin@RDRDassaur.co.uk

rdrdassaur.co.uk/

