



 MrGreen



 MrGreen



 MrGreen

**11 ARGYLE ROAD**  
**BH23 3NW**

**£2,750 PCM**

Welcome to Argyle Road, an exceptional opportunity to live in one of Mudeford's most sought-after locations. This beautifully presented, unfurnished four-bedroom semi-detached home offers an unparalleled blend of space, style, and breathtaking waterside views.

Perfect for families, this high-quality property welcomes pets and offers an expansive layout, including a private balcony that treats you to panoramic views of the tranquil harbour—an ideal setting to relax and unwind.

Inside, the home boasts four spacious double bedrooms, with the master bedroom featuring its own private balcony overlooking the harbour—a true standout feature of this stunning home.



**MrGreen**

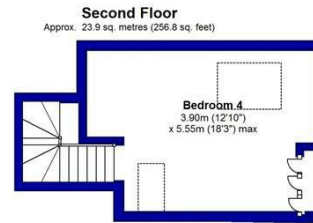
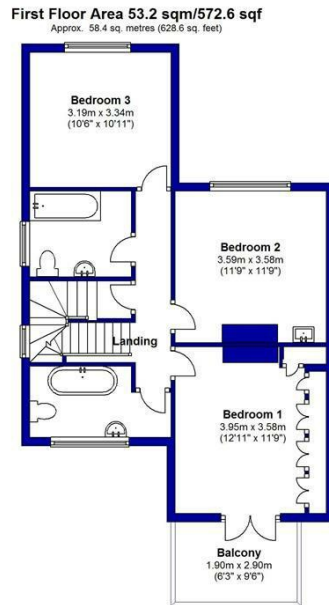
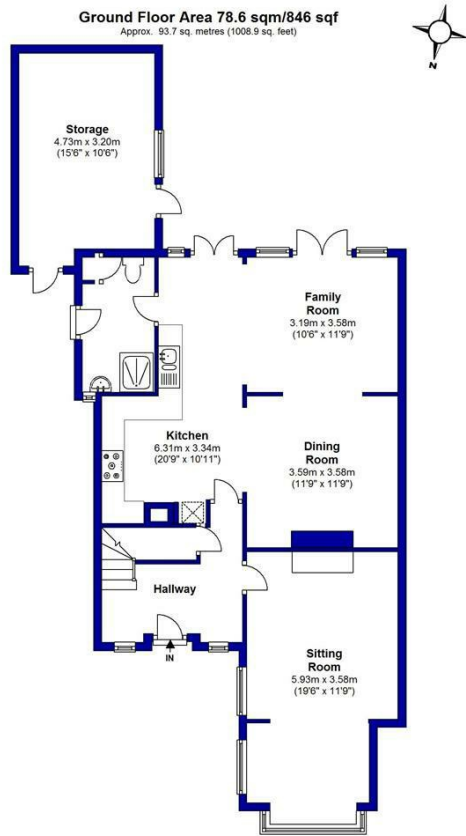


Illustration for identification purposes only; measurements are approximate, not to scale.

EPC South Coast Surveys  
Plan produced using PlanUp.



Energy Efficiency Rating		Current	Potential
Very energy efficient - lower running costs			
(92 plus) A			
(81-91) B			
(69-80) C			
(55-68) D			66
(39-54) E		50	
(21-38) F			
(1-20) G			
Not energy efficient - higher running costs			
<b>England &amp; Wales</b>		EU Directive 2002/91/EC	

Agents Note: Whilst every care has been taken to prepare these particulars, they are for guidance purposes only. All measurements are approximate and are for general guidance purposes only and whilst every care has been taken to ensure their accuracy, they should not be relied upon and potential buyers/tenants are advised to recheck the measurements

Mr Green Lettings  
35 Southbourne Grove  
Southbourne  
Bournemouth  
Dorset  
BH6 3QT

01202 835897  
lettings@mrgreenhomes.co.uk  
www.mrgreenhomes.co.uk



**MrGreen**