



MARINA CLOSE BOURNEMOUTH, BH5 1BT

£1,500 PER

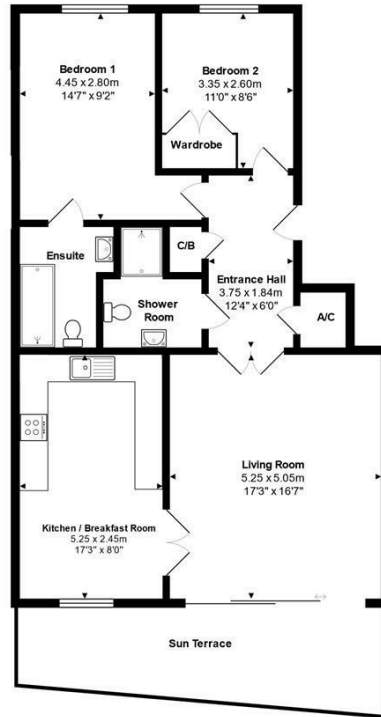
Welcome to The Point- this luxury two-bedroom, two-bathroom fourth-floor apartment is in one of the most sought-after locations on the South Coast and is to be offered on a 6 month basis. Nestled at The Point, Boscombe Spa. This stunning apartment offers unparalleled views over Boscombe Pier, Poole Bay, and extends towards the Isle of Purbeck and includes water, sewerage and broadband charges.

The focal point for this home is the expansive lounge area furnished with two separate sofas. This room benefits from large sliding doors giving access to the private south facing balcony which is further enhanced by the truly stunning panoramic sea views.

The kitchen is well appointed and is complete with integrated appliances. There is ample space for dining, with a table and chair set ideally positioned by large



MrGreen



Total Area: 80.0 m² ... 861 ft² (excluding sun terrace)

All measurements are approximate and for display purposes only



Energy Efficiency Rating		Current	Potential
Very energy efficient - lower running costs			
(92 plus) A			
(81-91) B		83	86
(69-80) C			
(55-68) D			
(39-54) E			
(21-38) F			
(1-20) G			
Not energy efficient - higher running costs			
England & Wales		EU Directive 2002/91/EC	

Agents Note: Whilst every care has been taken to prepare these particulars, they are for guidance purposes only. All measurements are approximate and are for general guidance purposes only and whilst every care has been taken to ensure their accuracy, they should not be relied upon and potential buyers/tenants are advised to recheck the measurements

Mr Green Lettings
35 Southbourne Grove
Southbourne
Bournemouth
Dorset
BH6 3QT

01202 835897
lettings@mrgreenhomes.co.uk
www.mrgreenhomes.co.uk



MrGreen