



30A GROVE MEWS BOURNEMOUTH, BH6 3RA

£1,200 PCM

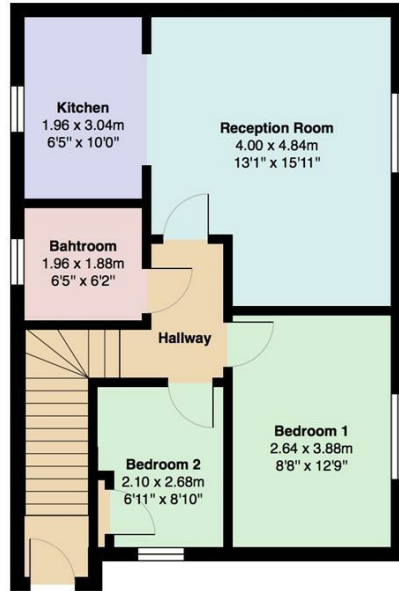
Welcome to Grove Mews - this charming 2 double bedroom apartment has been redecorated throughout with new carpets also fitted; it's nestled in the highly sought-after Southbourne Grove area, a short distance from shops, restaurants and the beach. The property boasts the convenience of its own private entrance and front parking.

Relax and entertain in the generously sized lounge/diner which is open plan to the well-equipped kitchen which includes a gas hob, electric oven, fridge freezer, and space for a washing machine.

Explore the two bedrooms, one being a spacious double bedroom and a cozy single bedroom complete with a fitted wardrobe, this property provides



MrGreen



Total Area: 54.9 m² ... 591 ft²

All measurements are approximate and for display purposes only



Energy Efficiency Rating		Current	Potential
Very energy efficient - lower running costs			
(92 plus) A			
(81-91) B		75	78
(69-80) C			
(55-68) D			
(39-54) E			
(21-38) F			
(1-20) G			
Not energy efficient - higher running costs			
England & Wales		EU Directive 2002/91/EC	

Agents Note: Whilst every care has been taken to prepare these particulars, they are for guidance purposes only. All measurements are approximate and are for general guidance purposes only and whilst every care has been taken to ensure their accuracy, they should not be relied upon and potential buyers/tenants are advised to recheck the measurements

Mr Green Lettings
 35 Southbourne Grove
 Southbourne
 Bournemouth
 Dorset
 BH6 3QT

01202 835897
 lettings@mrgreenhomes.co.uk
 www.mrgreenhomes.co.uk



MrGreen