



## 25 ST CATHERINES ROAD BOURNEMOUTH, BH6 4AE

£1,300 PCM

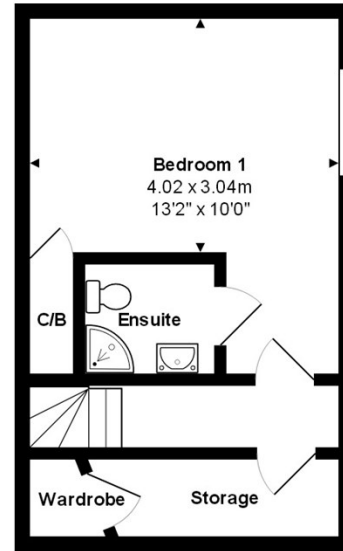
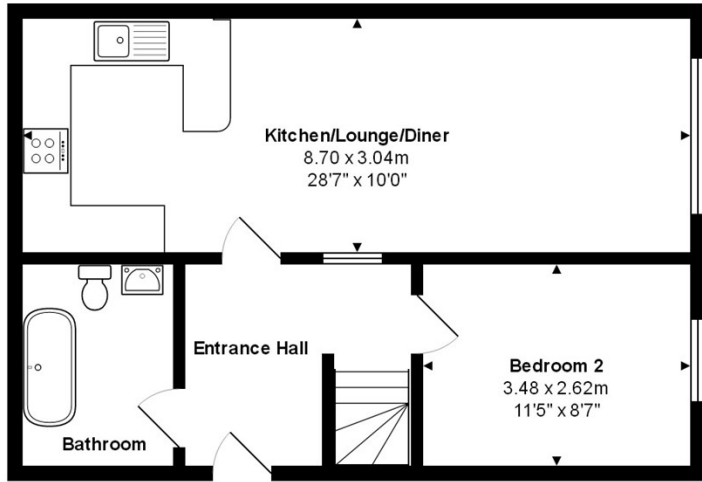
Welcome to Mya Casa- This beautifully presented, fully furnished, two double bedroom, split-level, apartment offers the perfect blend of comfort and style. Located in the exclusive development of Mya Casa, just 100 meters from Southbourne's stunning white sandy beaches, this property is an ideal choice for those seeking a coastal lifestyle.

The heart of this home is the open plan living/dining room and kitchen area. the kitchen is housed with white goods including a tall standing fridge freezer, washing machine, electric hob, oven and extractor fan. A tumble dryer is also provided within a utility space downstairs.

The dining area is furnished with a table and chairs with the lounge area providing tenants with two sofas, tv and storage unit.



# MrGreen



Total Area: 77.7 m<sup>2</sup> ... 837 ft<sup>2</sup>

All measurements are approximate and for display purposes only



Energy Efficiency Rating		
	Current	Potential
Very energy efficient - lower running costs		
(92 plus) <b>A</b>		
(81-91) <b>B</b>		
(69-80) <b>C</b>		
(55-68) <b>D</b>		
(39-54) <b>E</b>		
(21-38) <b>F</b>		
(1-20) <b>G</b>		
Not energy efficient - higher running costs		
<b>England &amp; Wales</b>	EU Directive 2002/91/EC	

Agents Note: Whilst every care has been taken to prepare these particulars, they are for guidance purposes only. All measurements are approximate and are for general guidance purposes only and whilst every care has been taken to ensure their accuracy, they should not be relied upon and potential buyers/tenants are advised to recheck the measurements

Mr Green Lettings  
35 Southbourne Grove  
Southbourne  
Bournemouth  
Dorset  
BH6 3QT

01202 835897  
lettings@mrgreenhomes.co.uk  
www.mrgreenhomes.co.uk



**MrGreen**