



MrGreen



96 STOUR ROAD DORSET, BH23 1JP

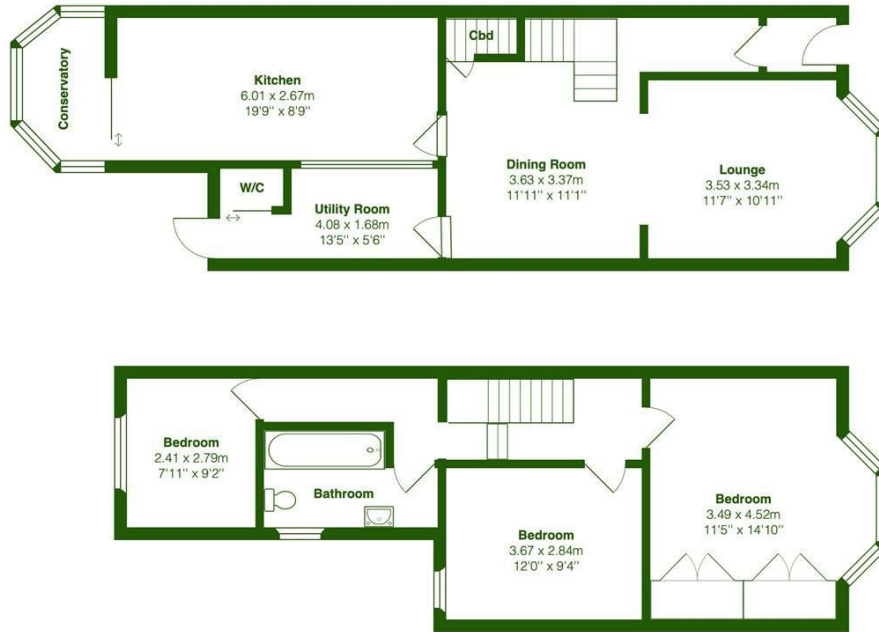
£1,600 PCM

Welcome to Stour Road... Explore this inviting three-bedroom, pets considered, mid-terrace house, ideally located in Christchurch. In an enviable location, this good size, unfurnished property offers a garage, private garden and spacious living areas, all within a stone's throw of the Priory Church, many restaurants, shops and bars.

Step into the property and be greeted with a sizable lounge with large bay windows allowing for plenty of natural light, a separate dining space and a conservatory providing ample space for relaxation. Discover the well-equipped kitchen which includes a range style cooker, dishwasher and fridge freezer; this property also includes the convenience of an additional utility room which includes space for a washing machine.



MrGreen



Total Area: 114.2 m² ... 1229 ft²
 All measurements are approximate and for display purposes only



Energy Efficiency Rating		Current	Potential
Very energy efficient - lower running costs			
(92 plus) A			
(81-91) B			
(69-80) C			
(55-68) D			
(39-54) E			
(21-38) F			
(1-20) G			
Not energy efficient - higher running costs			
England & Wales		EU Directive 2002/91/EC	

Agents Note: Whilst every care has been taken to prepare these particulars, they are for guidance purposes only. All measurements are approximate and are for general guidance purposes only and whilst every care has been taken to ensure their accuracy, they should not be relied upon and potential buyers/tenants are advised to recheck the measurements

Mr Green Lettings
 35 Southbourne Grove
 Southbourne
 Bournemouth
 Dorset
 BH6 3QT

01202 835897
 lettings@mrgreenhomes.co.uk
 www.mrgreenhomes.co.uk



MrGreen