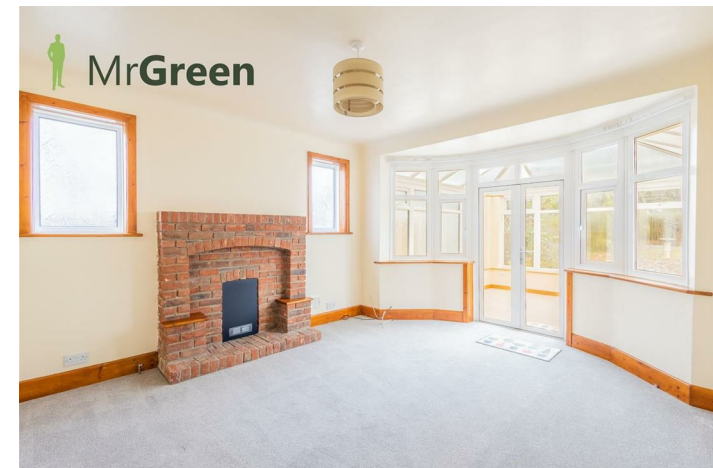




 **MrGreen**



 **MrGreen**



60 BELLE VUE ROAD
DORSET, BH6 3DT

£2,250 PCM

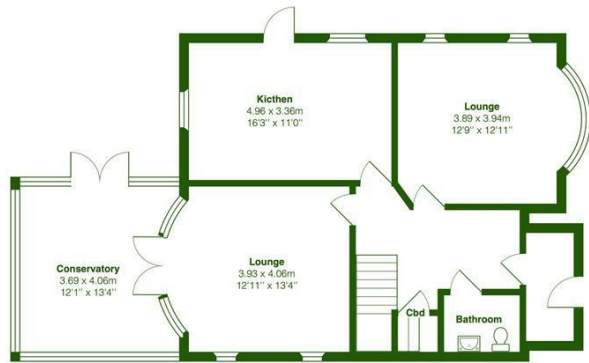
Welcome to Belle Vue Road! Discover this spacious 4-bedroom detached house, conveniently located in Southbourne, just a short walk to the beach and high street. The property boasts driveway parking for 2-3 cars, a garage, 2 reception rooms, conservatory, and spacious kitchen, in addition to an expansive garden.

The property boasts two large reception rooms, one with double patio doors leading into the conservatory, allowing for extended space. The kitchen is spacious and comes fully equipped with a washing machine, integrated dishwasher, 5-ring gas hob, electric oven, fridge, and freezer.

Three of the bedrooms are large double bedrooms with a further single fourth bedroom also available that could be used as either as a single bedroom, study



MrGreen



Total Area: 154.7 m² ... 1666 ft²
 All measurements are approximate and for display purposes only



Energy Efficiency Rating		
	Current	Potential
Very energy efficient - lower running costs		
(92 plus) A		
(81-91) B		
(69-80) C		
(55-68) D		
(39-54) E		
(21-38) F		
(1-20) G		
Not energy efficient - higher running costs		
England & Wales	EU Directive 2002/91/EC	

Agents Note: Whilst every care has been taken to prepare these particulars, they are for guidance purposes only. All measurements are approximate and are for general guidance purposes only and whilst every care has been taken to ensure their accuracy, they should not be relied upon and potential buyers/tenants are advised to recheck the measurements

Mr Green Lettings
 35 Southbourne Grove
 Southbourne
 Bournemouth
 Dorset
 BH6 3QT

01202 835897
 lettings@mrgreenhomes.co.uk
 www.mrgreenhomes.co.uk



MrGreen