



## 7A WELMORE ROAD

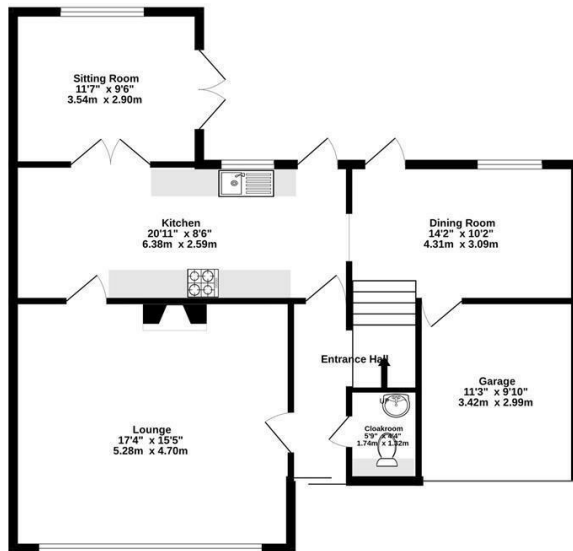
GLINTON, PE6 7LU

£450,000  
FREEHOLD

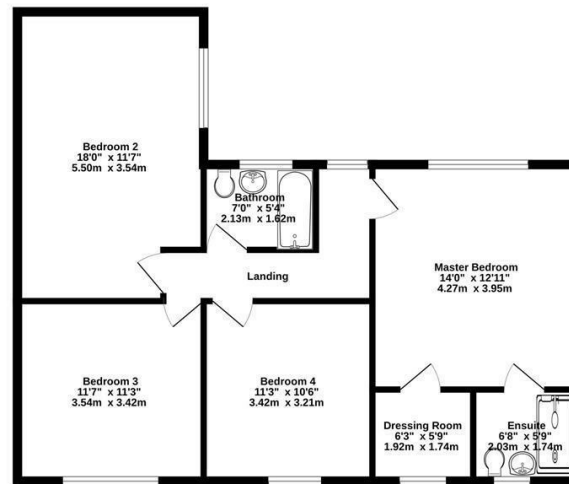
**\*\*Extended Detached Four Double Bedroom Home in Glinton\*\*** Featuring lounge, family room and sitting room. Kitchen/breakfast room with range of integrated appliances, en-suite and dressing area to master bedroom. Driveway and enclosed, private rear garden. Walking distance of Arthur Mellows School. EPC D Rating. Council Tax Band E.

**beeby's**  
PROPERTIES

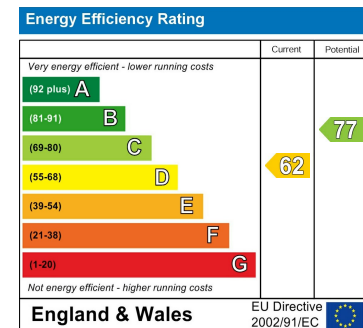
Ground Floor  
869 sq.ft. (80.7 sq.m.) approx.



1st Floor  
803 sq.ft. (74.6 sq.m.) approx.



Two Storey, Four Bedroom  
TOTAL FLOOR AREA : 1672 sq.ft. (155.3 sq.m.) approx.  
Made with Metropix ©2023



Agents Note: Whilst every care has been taken to prepare these particulars, they are for guidance purposes only. All measurements are approximate and are for general guidance purposes only and whilst every care has been taken to ensure their accuracy, they should not be relied upon and potential buyers/tenants are advised to recheck the measurements

Market Deeping  
11 High Street  
Market Deeping  
PE6 8ED

01778 369369  
enquiries@beebysproperties.co.uk  
<http://www.beebysproperties.co.uk/>

beebys  
PROPERTIES