

131B EASTGATE

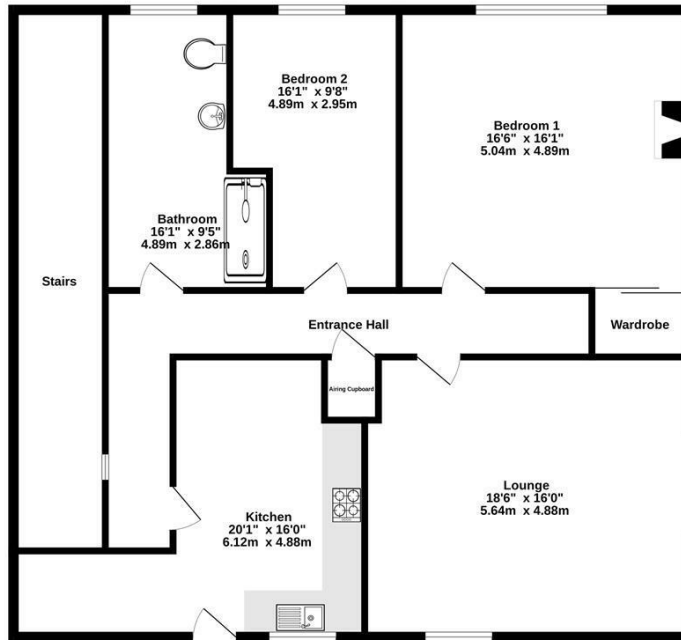
DEEPING ST JAMES, PETERBOROUGH, PE6 8RB

£795 PER MONTH

****TWO BEDROOM FIRST FLOOR APARTMENT WITH PRIVATE ENTRANCE AND CAR PORT!**** Beebys Property Services are pleased to offer to let this two bedroom apartment on Eastgate. The property offers entrance hall, fitted kitchen/diner, lounge, double bedroom and a further good size single. The bathroom has recently been refurbished. There is a car port and further parking for the block. Call now to arrange a viewing.

beebys
PROPERTIES

Ground Floor
1378 sq.ft. (128.0 sq.m.) approx.



First Floor Apartment, 2 Bedrooms
TOTAL FLOOR AREA: 1378 sq.ft. (128.0 sq.m.) approx.
Made with Metropix (3/2025)



Energy Efficiency Rating		
	Current	Potential
Very energy efficient - lower running costs		
(92 plus) A		
(81-91) B		
(69-80) C	70	76
(55-68) D		
(39-54) E		
(21-38) F		
(1-20) G		
Not energy efficient - higher running costs		
England & Wales	EU Directive 2002/91/EC	

Agents Note: Whilst every care has been taken to prepare these particulars, they are for guidance purposes only. All measurements are approximate and are for general guidance purposes only and whilst every care has been taken to ensure their accuracy, they should not be relied upon and potential buyers/tenants are advised to recheck the measurements

Market Deeping
11 High Street
Market Deeping
PE6 8ED

01778 369369
enquiries@beebysproperties.co.uk
<http://www.beebysproperties.co.uk/>

beebys
PROPERTIES