



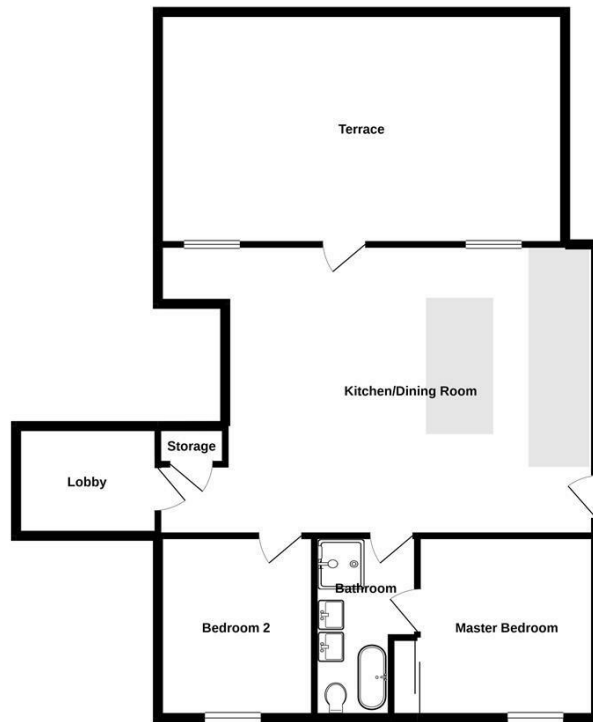
FLAT 2 MILL ROAD PETERBOROUGH, PE8 6PU

£1,100 PER MONTH

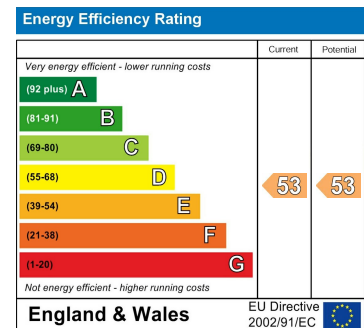
****LUXURY TWO BEDROOM GROUND FLOOR APARTMENT!**** Beebys Properties are pleased to offer for let this beautifully presented apartment which is located in The Mill in Yarwell, which has been renovated into 6 apartments and refurbished to a very high level. Set within the Yarwell Mill Country Park, giving access to residential amenities, the property offers an allocated parking space and private terrace. With a private entrance to the apartment which offers entrance hall with storage cupboard, large open plan lounge through to kitchen diner with breakfast bar, access to the private terrace, master bedroom with fitted wardrobes, 'Jack and Jill' four piece bathroom, with accesses from the hall and master bedroom and a further double bedroom. The kitchen is equip with multiple base and wall units, integral 60/40 fridge/freezer, single oven, microwave, dishwasher, wine cooler and induction hob with granite worktops. This spacious apartment is light and airy throughout and is available from the end of November. CALL NOW TO ARRANGE A VIEWING!

beebys
PROPERTIES

Ground Floor



Made with Mergim © 2020



Agents Note: Whilst every care has been taken to prepare these particulars, they are for guidance purposes only. All measurements are approximate and are for general guidance purposes only and whilst every care has been taken to ensure their accuracy, they should not be relied upon and potential buyers/tenants are advised to recheck the measurements

Market Deeping
11 High Street
Market Deeping
PE6 8ED

01778 369369
enquiries@beebysproperties.co.uk
<http://www.beebysproperties.co.uk/>

beebys
PROPERTIES