



4 ST ANDREWS ROAD

PETERBOROUGH, PE6 9DJ

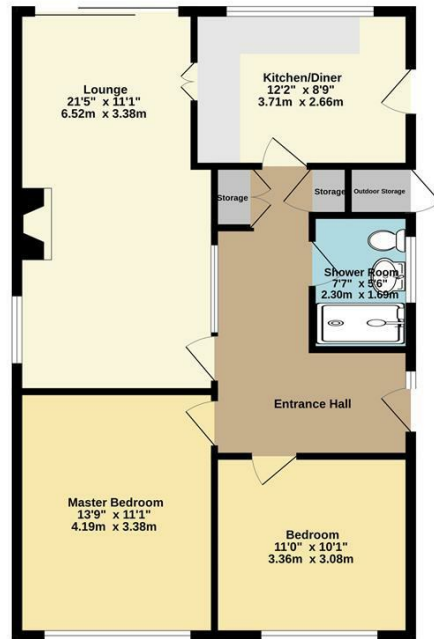
£250,000
FREEHOLD

****SPACIOUS TWO BEDROOM BUNGALOW IN THE DESIRABLE NORTHBOROUGH VILLAGE - NO CHAIN!****

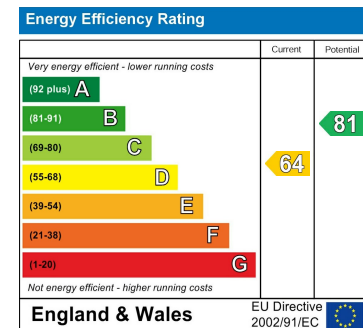
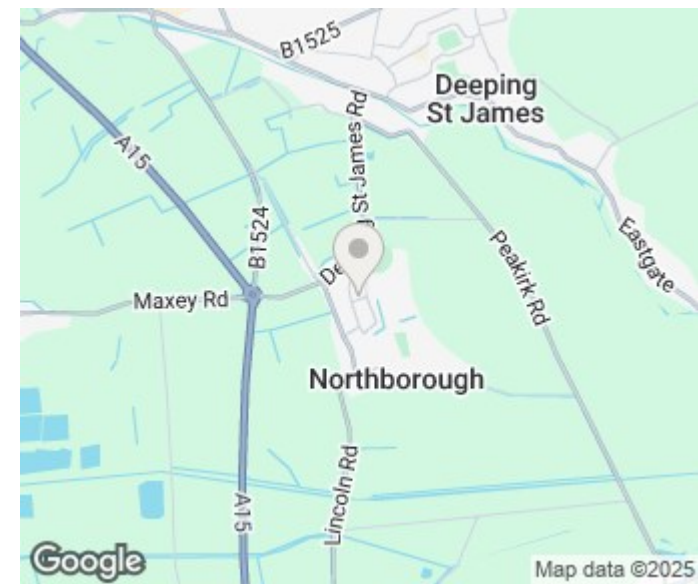
Beebys Property Services are delighted to bring to the sales market this two bedroom bungalow. Situated in the popular village of Northborough, the bungalow offers two large double bedrooms, wet room, spacious lounge and kitchen diner. There is a lawn to the front and a well sized garden to rear, with two parking spaces, garage and further storage. EPC 'D' Rating. Council Tax Band 'C'.

beebys
PROPERTIES

Ground Floor
770 sq.ft. (71.5 sq.m.) approx.



One Floor, Two Bedrooms
TOTAL FLOOR AREA: 770 sq.ft. (71.5 sq.m.) approx.
Made with Metropix 12024



Agents Note: Whilst every care has been taken to prepare these particulars, they are for guidance purposes only. All measurements are approximate and are for general guidance purposes only and whilst every care has been taken to ensure their accuracy, they should not be relied upon and potential buyers/tenants are advised to recheck the measurements

Market Deeping
11 High Street
Market Deeping
PE6 8ED

01778 369369
enquiries@beebysproperties.co.uk
<http://www.beebysproperties.co.uk/>

beebys
PROPERTIES