



430 Anglesey Road

, Burton-On-Trent, DE14 3NF

Guide price £275,000



Burton's only "Legally trained" Estate Agents are delighted to bring to the market this unique spacious large terraced five-bedroom family home with an outbuilding situated close to the Town Centre.

The property will be sold with vacant possession.

INTERNAL:

Entrance Hall - The entrance door is accessed to the gated side opening to the hall, with doors to both reception rooms.

Reception Room One - Offering generous space for furniture ideal for use as a living room, with a front aspect bay window, carpeted flooring and a feature closed fireplace.



DWELLINGS
ESTATE AGENTS

**SELL YOUR PROPERTY WITH
US FOR ONE FIXED FLAT FEE**

£499*

CALL ON
01283 890199

OR VISIT US ONLINE AT
dwellingsestate.co.uk

Entrance Hall

The entrance door is accessed to the gated side opening to the hall, with doors to both reception rooms.

Reception 15'5" x 13'1" (4.7 x 4)

Dining Room 13'5" x 13'1" (4.1 x 4)

Kitchen 18'0" x 6'10" (5.5 x 2.1)

Bathroom One 7'2" x 6'10" (2.2 x 2.1)

Bedroom One 13'5" x 12'9" (4.1 x 3.9)

Bedroom Two 13'5" x 8'6" (4.1 x 2.6)

Bedroom Three 13'1" x 8'6" (4 x 2.6)

Bedroom Four 9'10" x 9'6" (3m x 2.9)

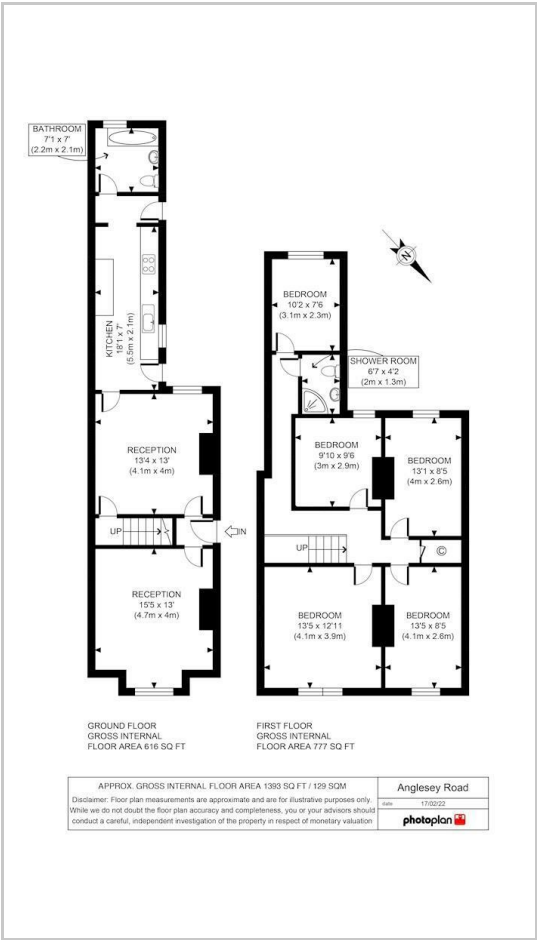
Bedroom Five 10'2" x 7'6" (3.1 x 2.3)

Bathroom Two 6'6" x 4'3" (2 x 1.3)

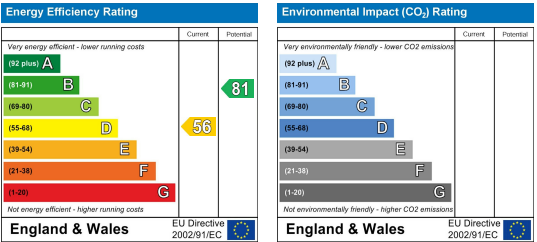
Area Map



Floor Plans



Energy Efficiency Graph



These particulars, whilst believed to be accurate are set out as a general outline only for guidance and do not constitute any part of an offer or contract. Intending purchasers should not rely on them as statements of representation of fact, but must satisfy themselves by inspection or otherwise as to their accuracy. No person in this firms employment has the authority to make or give any representation or warranty in respect of the property.