



5 Beech Drive

Stretton, Burton-On-Trent, DE13 0DY

Offers in the region of £429,950



OPEN HOUSE WEEKEND
Saturday 10th May 10am - 2pm
Sunday 11th May 10am - 2pm

This expansive detached bungalow offers a well-planned ground-floor layout, providing exceptional living space for families. The inviting entrance hallway leads to all key areas of the home. On either side of the property, there are two spacious double bedrooms, one of which is the master featuring its own ensuite. As you move through the hallway, you'll find a third double bedroom, a central storage area, a family bathroom, and an impressive open-plan kitchen and living area. Large bi-fold doors in this space allow an abundance of natural light and frame stunning views of the landscaped and very much private garden.

The kitchen is equipped with modern conveniences, including AEG-integrated appliances, a stainless-steel mixer tap over a dual ceramic basin, and touch-pad LED-controlled mood lighting around the glass lantern. It also boasts separately a full-sized freezer and a full-sized fridge, a four-ring induction hob with built-in extractor hood above, two undercounter electric ovens, one with microwaving capabilities, and a separate warming



PORCH

Charming, character-filled porch that blends timeless elegance with warmth. The floor is beautifully adorned with classic Minton tiles.

KITCHEN 19'2" x 18'5" (5.85m x 5.63m)

UTILITY 2'11" x 5'2" (0.90m x 1.60m)

MASTER BEDROOM 11'5" x 13'1" (3.48m x 4.00m)

EN SUITE 2'10" x 9'2" (0.87m x 2.80m)

BEDROOM TWO 11'9" x 10'9" (3.60m x 3.30m)

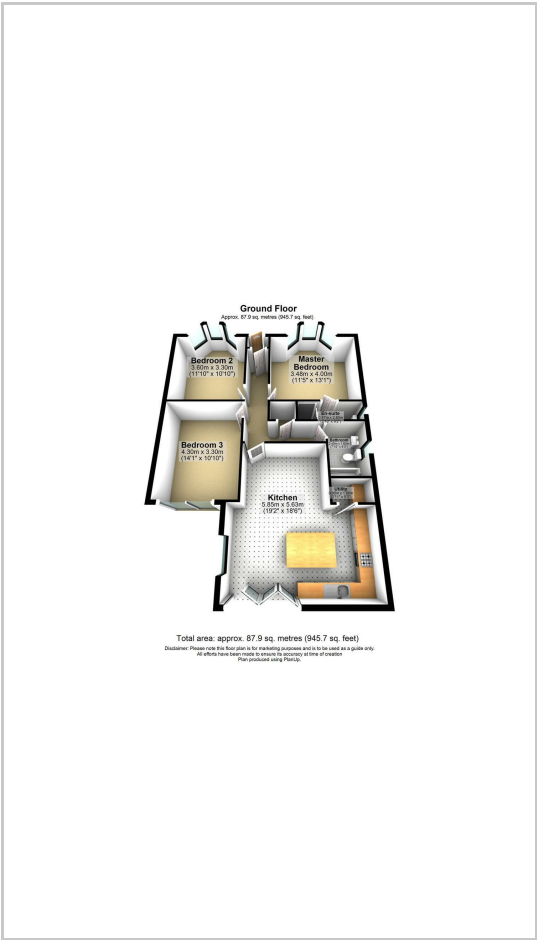
BEDROOM THREE 14'1" x 10'9" (4.30m x 3.30m)

BATHROOM 7'10" x 5'2" (2.40m x 1.60m)

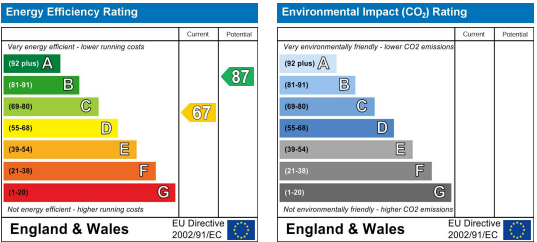
Area Map



Floor Plans



Energy Efficiency Graph



These particulars, whilst believed to be accurate are set out as a general outline only for guidance and do not constitute any part of an offer or contract. Intending purchasers should not rely on them as statements of representation of fact, but must satisfy themselves by inspection or otherwise as to their accuracy. No person in this firms employment has the authority to make or give any representation or warranty in respect of the property.