



**DWELLINGS**  
ESTATE AGENTS

# 2 Keston Road

Pinchbeck, Spalding, PE11 5AB

Guide price £450,000

 3
  2
  1
  B

Dwellings Estate Agents are delighted to present to the market this relatively new three-bedroom bungalow situated in a quiet cul de sac in the sought-after village of Pinchbeck, within walking distance of the local amenities. The village of Pinchbeck offers a wide range of facilities, including a parish church, primary school, doctors, surgery, shops, public houses, etc. The market town of Spalding is within two miles of the property and offers a full range of shopping, banking, leisure, commercial, and educational facilities.

This beautiful detached bungalow boasts a stunningly modern interior throughout. In brief, the bungalow comprises a generously sized, contemporary kitchen/breakfast room, a comfortable living area, a separate utility room, three spacious double bedrooms (with the master bedroom featuring its own en suite), and a well-appointed family bathroom.

The open-plan kitchen and living room have bi-fold doors leading into a well-maintained paved garden. The kitchen includes a built-in fridge/freezer, an induction hob with an extractor, an oven with a slide-away door, a combination oven/microwave, a warming drawer, a dishwasher, all of which are Neff, and a wine chilling cabinet. All new fitted blinds, carpets, and wardrobes are included in the sale price as well.



**DWELLINGS**  
ESTATE AGENTS

**DWELLINGS**  
ESTATE AGENTS

**DWELLINGS**  
ESTATE AGENTS



**HALLWAY**

**KITCHEN/BREAKFAST ROOM 23'11" x 13'9" (7.3m x 4.2m)**

**LIVING ROOM 22'3" x 14'1" (6.8m x 4.3m)**

**UTILITY ROOM 8'2" x 7'10" (2.5m x 2.4m)**

**MASTER BEDROOM 18'4" x 11'9" (5.6m x 3.6m)**

**EN SUITE 7'10" x 7'2" (2.4m x 2.2m)**

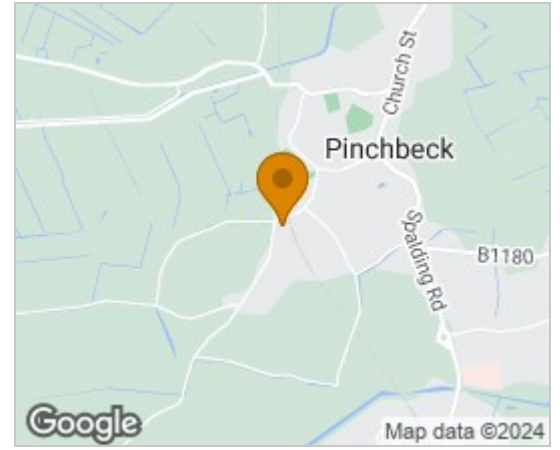
**BEDROOM TWO 10'5" x 10'5" (3.2m x 3.2m)**

**BEDROOM THREE 10'5" x 9'6" (3.2m x 2.9m)**

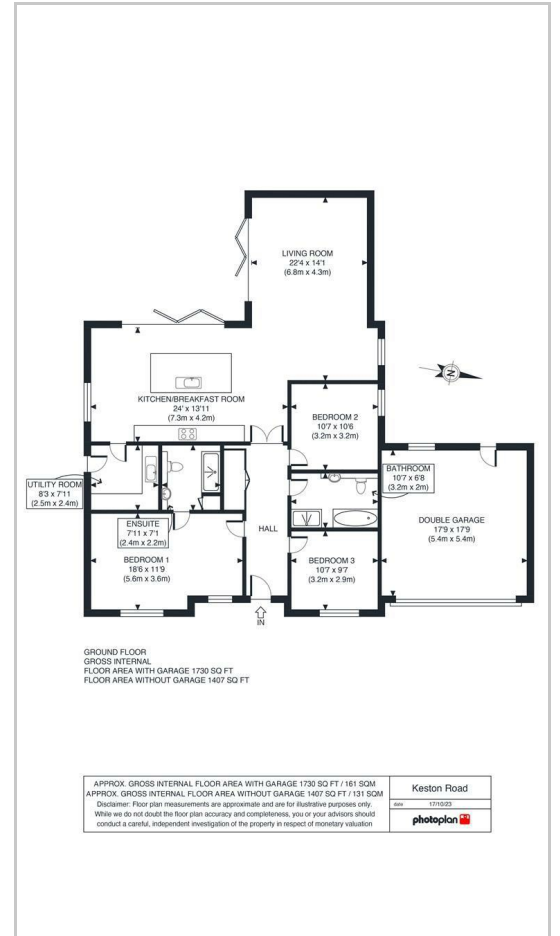
**BATHROOM 10'5" x 6'6" (3.2m x 2.0m)**

**DOUBLE GARAGE 17'8" x 17'8" (5.4m x 5.4m)**

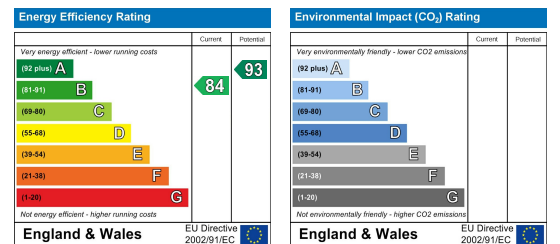
**Area Map**



**Floor Plans**



**Energy Efficiency Graph**



These particulars, whilst believed to be accurate are set out as a general outline only for guidance and do not constitute any part of an offer or contract. Intending purchasers should not rely on them as statements of representation of fact, but must satisfy themselves by inspection or otherwise as to their accuracy. No person in this firm's employment has the authority to make or give any representation or warranty in respect of the property.

Guild Street,, Burton on Trent, Staffordshire, DE14 1NA

Tel: 01283 890199 Email: hello@dwellingsestate.co.uk <https://www.dwellingsestate.co.uk>