



**GASCOIGNE
HALMAN**

14 WRENMERE CLOSE, SANDBACH

THE AREAS LEADING ESTATE AGENT

OFFERS IN EXCESS OF £400,000

Located in an enviable location within a small and quiet cul-de-sac on Wrenmere Close, a deceptively spacious detached family home with the most delightful private rear garden, overlooking a small green to the front.

Looking for your dream home?

This stunning detached family residence on Wrenmere Close offers everything you need for modern living in a tranquil setting.

The inviting living room features garden access and a cozy, contemporary atmosphere, while the modern kitchen diner, equipped with high-end Panorama units and integrated appliances is perfect for culinary enthusiasts. The utility room has units mirroring the kitchen, space for two appliances and a door to the pathway leading to the rear garden.

Upstairs, you'll find four generously sized bedrooms, including a master with en-suite shower room.

Enjoy the luxury of a generous rear garden with a paved patio, ornamental trees, and complete privacy.

The front driveway accommodates several vehicles and leads to a detached garage, with gated side access to the garden.

This is the ultimate ready to move into family home, in an ideal location in the heart of Cheshire - don't miss out!

DIRECTIONS

CW11 1XS - Wrenmere Close, Sandbach

HOLMES CHAPEL OFFICE

01477 417000

holmeschapel@gascoignehalman.co.uk

14 The Square, Holmes Chapel, CW4 7AB

LOCATION

Sandbach is a pleasant, historic market town located in South East Cheshire. It has very efficient communications within close proximity of Junction 17 on the M6 motorway. It has its own railway station on the Crewe to Manchester mainline, providing rapid access to Manchester International airport. Crewe mainline station is only ten minutes away, making London under two hours away. Excellent educational facilities are catered for in both the state and private sector with Sandbach High School and Sixth Form College having a very good reputation. Sandbach town offers a good range of day to day shopping facilities. Leisure centres cater for most sporting requirements and there are also a number of private sporting clubs including numerous notable golf courses within easy reach.

TENURE

Freehold

SERVICES (NOT TESTED)

Services have not been tested and you are advised to make your own enquiries and/or inspections.

LOCAL AUTHORITY

Cheshire East, council tax band E

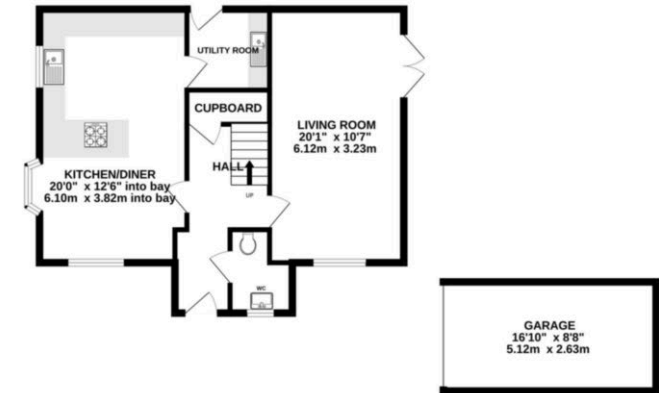
VIEWING

Viewing strictly by appointment through the Agents.

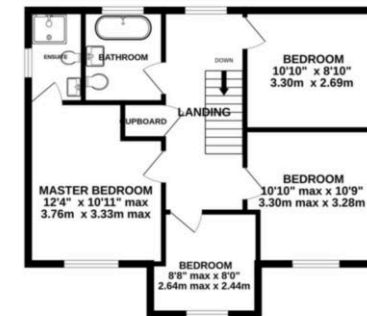
ENERGY PERFORMANCE RATING

EPC Rating: C

GROUND FLOOR
760 sq.ft. (70.7 sq.m.) approx.



1ST FLOOR
593 sq.ft. (55.1 sq.m.) approx.



TOTAL FLOOR AREA: 1354 sq.ft. (125.8 sq.m.) approx.
Measurements are approximate. Not to scale. Illustrative purposes only.
Made with Metropix ©2024

**GASCOIGNE
HALMAN**

NOTICE Gascoigne Halman for themselves and for the vendors or lessors of this property whose agents they are give notice that: (i) the particulars are set out as a general outline only for the guidance of intending purchasers or lessees, and do not constitute, nor constitute part of, an offer or contract; (ii) all descriptions, dimensions, references to condition and necessary permissions for use and occupation, and other details are given in good faith and are believed to be correct but any intending purchasers or tenants should not rely on them as statements or representations of fact but must satisfy themselves by inspection or otherwise as to the correctness of each of them; (iii) no person in the employment of Gascoigne Halman has any authority to make or give any representation or warranty whatever in relation to this property.