



Around the local neighbourhood

- | | | |
|--|--|--|
| 1 Co-op
GL10 3BJ | 5 Stonehouse Post Office
GL10 2NA | 9 Stonehouse Pharmacy
GL10 2NA |
| 2 Sainsbury's
GL5 3HG | 6 Maidenhill Secondary School
GL10 2HA | 10 Stonehouse Football Club
GL10 2DG |
| 3 Five Valleys shopping centre
GL5 1RR | 7 Eastington Village Hall
GL10 3AT | 11 Slimbridge Wetland Centre
GL2 7BT |
| 4 Wycliffe College Preparatory School
GL10 2LD | 8 Great Oldbury Primary Academy
GL10 3WH | 12 Stratford Park Leisure Centre
GL5 4AF |

Great Oldbury Stonehouse

This stunning collection of 2, 3 and 4 bedroom homes is in an exciting new community in Great Oldbury

With its own local centre, purpose-built nursery, pre-school and Primary Academy, Great Oldbury is just a 5 minute drive from Stonehouse with its shops, pubs, restaurants, health and sports facilities. The bustling Cotswold town of Stroud, known as a haven for artists and musicians and with an impressive Farmers' Market, is about 5 miles.

Trains run from both Stonehouse and Stroud to London Paddington, Bristol, Cheltenham, Swindon and Reading.

Junction 13 of the M5 is only one mile away giving commuters easy access to Bristol, South Wales, the M4 and north to Gloucester and Cheltenham. The A419 links the area to the A38 and Severn Valley, and east to the 'Capital of the Cotswolds,' Cirencester, a pretty 18 mile drive.

So, if you're looking for a quality new home in the glorious Gloucestershire countryside, your search ends here.

Great Oldbury Stonehouse

Development layout



4 bedroom home

- The Pembroke
- The Leverton
- The Aslin
- The Mylne

3 bedroom home

- The Becket
- The Becket II
- The Elmslie
- The Eveleigh

2 bedroom home

- The Cartwright

● Affordable housing

v visitor space **ss** substation

Please note: Hedgehog highways to fences, please see sales consultant for specific details.

Not to scale. Trees and landscaping are indicative only and may alter during construction. The trees, shrubs and gardens shown are illustrative only. Finishes and materials may vary from those shown here. Please see our sales consultant for further details.



The Cartwright

2 bedroom home

Great Oldbury

Stonehouse, Gloucestershire GL10 3RL | 01453 374015

lindenhomes.co.uk

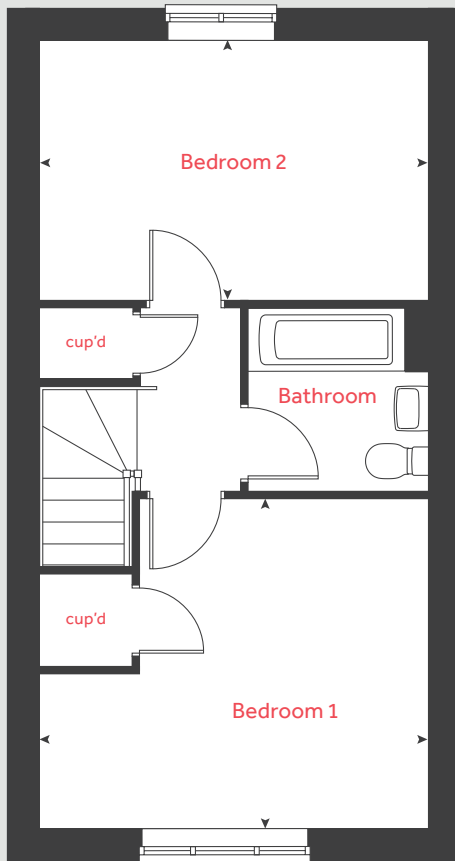
Linden
HOMES

The Cartwright

2 bedroom home

Homes 21, 22, 23, 24, 25, 47, 48, 49, 152, 172, 173 & 174

First floor



Ground floor

Kitchen / dining area

4.82m x 2.13m 15' 10" x 7' 0"

Living room

4.20m x 3.60m 13' 9" x 11' 10"

First floor

Bedroom 1

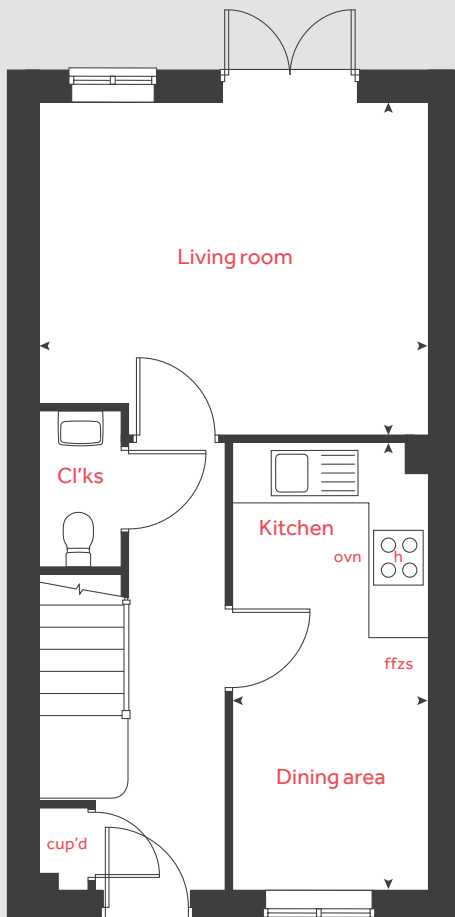
4.20m x 3.58m 13' 9" x 11' 9"

Bedroom 2

4.20m x 2.79m 13' 9" x 9' 2"

h hob cup'd cupboard
 ovn oven < > measuring points
 ffzs fridge freezer space

Ground floor



Please note, floorplans and dimensions are taken from architectural drawings and are for guidance only. Dimensions stated are within a tolerance of plus or minus 50mm. Overall dimensions are usually stated and there may be projections into these. With our continual improvement policy we constantly review our designs and specification to ensure we deliver the best products to our customers. Computer generated images not to scale. Finishes and materials may vary and landscaping is illustrative only. Kitchen layouts are indicative only and may change. To confirm specific details on our homes please see our sales consultant.

Produced by Vistry Group Design Studio.

When you have finished with this leaflet please recycle it.

WSTON GD59349 / 05.21

Linden
 HOMES



The Becket

3 bedroom home

Great Oldbury

Stonehouse, Gloucestershire GL10 3RL | 01453 374015

lindenhomes.co.uk

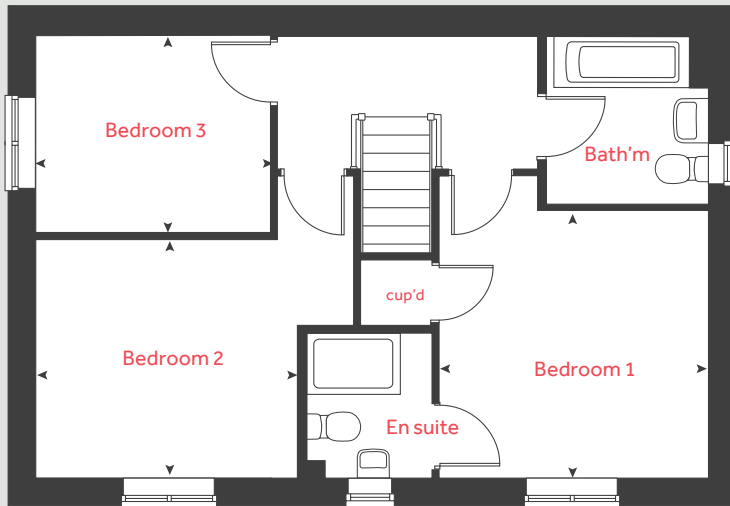
Linden
HOMES

The Becket

3 bedroom home

Homes 13, 66, 90, 123, 132,
139, 158 & 167

First floor



Ground floor

Kitchen / dining area
5.59m x 2.90m 18' 4" x 9' 6"

Living room
5.59m x 3.33m 18' 4" x 10' 11"

First floor

Bedroom 1
3.40m x 3.33m 11' 2" x 11' 1"

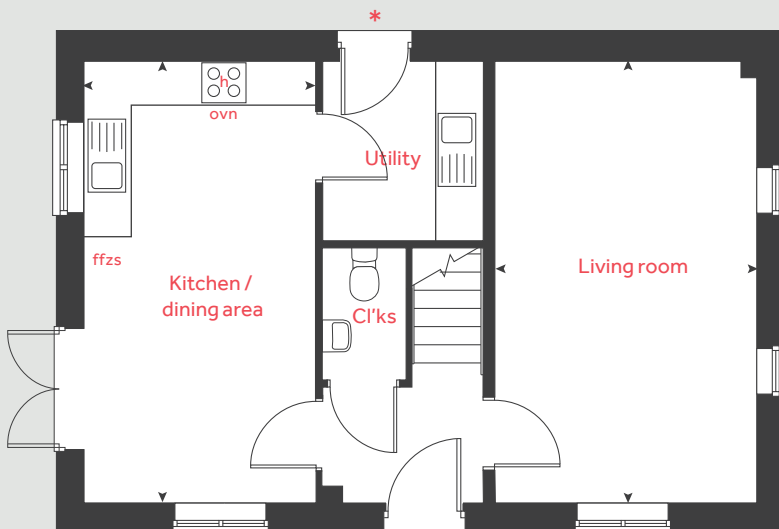
Bedroom 2
3.34m x 3.01m 10' 12" x 9' 10"

Bedroom 3
2.99m x 2.51m 9' 10" x 8' 3"

h	hob	cup'd	cupboard
ovn	oven	◀ ▶	measuring points
ffzs	fridge freezer space		

* Utility door applies to selected plots only. Please see sales consultant for further details.

Ground floor



Please note, floorplans and dimensions are taken from architectural drawings and are for guidance only. Dimensions stated are within a tolerance of plus or minus 50mm. Overall dimensions are usually stated and there may be projections into these. With our continual improvement policy we constantly review our designs and specification to ensure we deliver the best products to our customers. Computer generated images not to scale. Finishes and materials may vary and landscaping is illustrative only. Kitchen layouts are indicative only and may change. To confirm specific details on our homes please see our sales consultant.

Produced by Vistry Group Design Studio.

When you have finished with this leaflet please recycle it.

WSTON GD59349 / 05.21

Linden
HOMES



The Becket II

3 bedroom home

Great Oldbury

Stonehouse, Gloucestershire GL10 3RL | 01453 374015

lindenhomes.co.uk

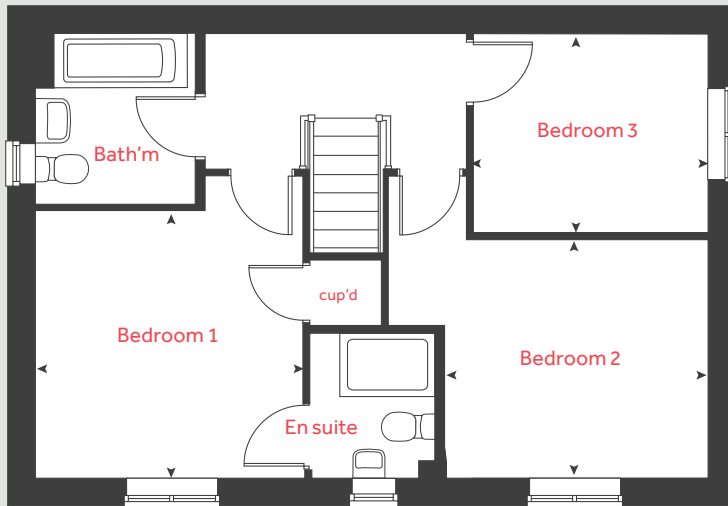
Linden
HOMES

The Becket II

3 bedroom home

Homes 1, 11, 26, 42, 45 & 115

First floor



Ground floor

Kitchen / dining area
5.59m x 2.90m 18' 4" x 9' 6"

Living room
5.59m x 3.33m 18' 4" x 10' 11"

First floor

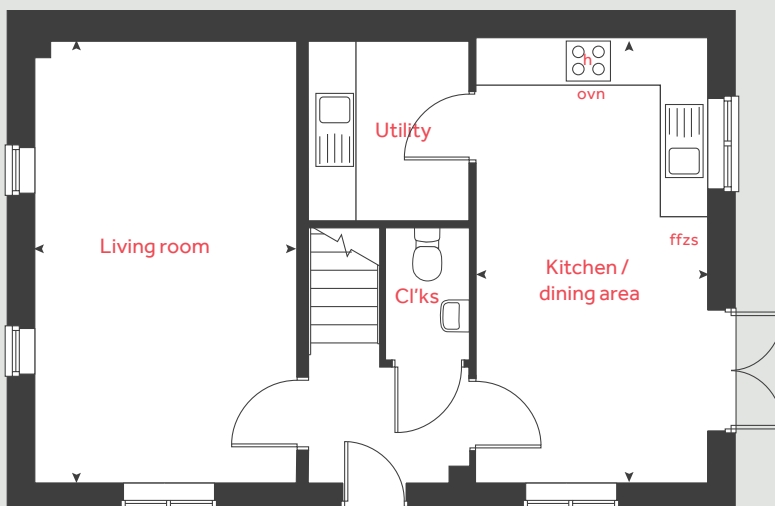
Bedroom 1
3.40m x 3.33m 11' 2" x 11' 1"

Bedroom 2
3.34m x 3.01m 10' 12" x 9' 10"

Bedroom 3
2.99m x 2.51m 9' 10" x 8' 3"

h	hob	cup'd	cupboard
ovn	oven	◀ ▶	measuring points
ffzs	fridge freezer space		

Ground floor



Please note, floorplans and dimensions are taken from architectural drawings and are for guidance only. Dimensions stated are within a tolerance of plus or minus 50mm. Overall dimensions are usually stated and there may be projections into these. With our continual improvement policy we constantly review our designs and specification to ensure we deliver the best products to our customers. Computer generated images not to scale. Finishes and materials may vary and landscaping is illustrative only. Kitchen layouts are indicative only and may change. To confirm specific details on our homes please see our sales consultant.

Produced by Vistry Group Design Studio.

When you have finished with this leaflet please recycle it.

WSTON GD59349 / 05.21

Linden
HOMES



The Elmslie

3 bedroom home

Great Oldbury

Stonehouse, Gloucestershire GL10 3RL | 01453 374015

lindenhomes.co.uk

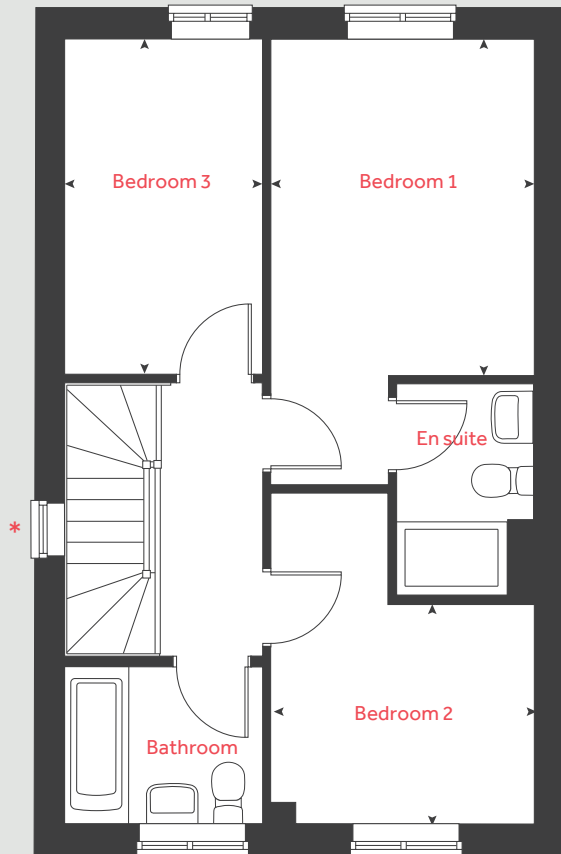
Linden
HOMES

The Elmslie

3 bedroom home

Homes 2, 4-9, 41, 43, 44, 46, 50, 51, 91-94, 97-98, 101-104, 112-114, 119, 120, 133-136, 140, 141, 151, 153, 156-157, 175 & 176

First floor



Ground floor

Kitchen / dining area
5.05m x 2.91m 16' 6" x 9' 6"

Living room
5.09m x 3.63m 16' 8" x 11' 11"

First floor

Bedroom 1
3.61m x 2.85m 12' 0" x 9' 4"

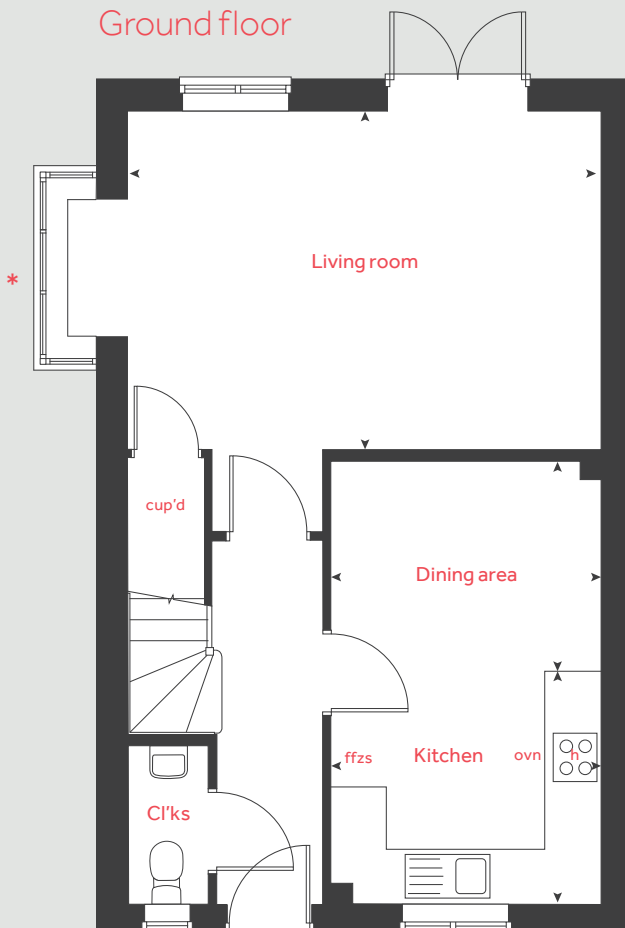
Bedroom 2
2.85m x 2.37m 9' 4" x 7' 9"

Bedroom 3
3.64m x 2.15m 11' 11" x 7' 1"

h hob cup'd cupboard
ovn oven < > measuring points
ffzs fridge freezer space

* Windows apply to selected plots only. Please see sales consultant for further details.

Ground floor



Please note, floorplans and dimensions are taken from architectural drawings and are for guidance only. Dimensions stated are within a tolerance of plus or minus 50mm. Overall dimensions are usually stated and there may be projections into these. With our continual improvement policy we constantly review our designs and specification to ensure we deliver the best products to our customers. Computer generated images not to scale. Finishes and materials may vary and landscaping is illustrative only. Kitchen layouts are indicative only and may change. To confirm specific details on our homes please see our sales consultant.

Produced by Vistry Group Design Studio.

When you have finished with this leaflet please recycle it.

WSTON GD59349 / 05.21

Linden
HOMES



The Eveleigh

3 bedroom home

Great Oldbury

Stonehouse, Gloucestershire GL10 3RL | 01453 374015

lindenhomes.co.uk

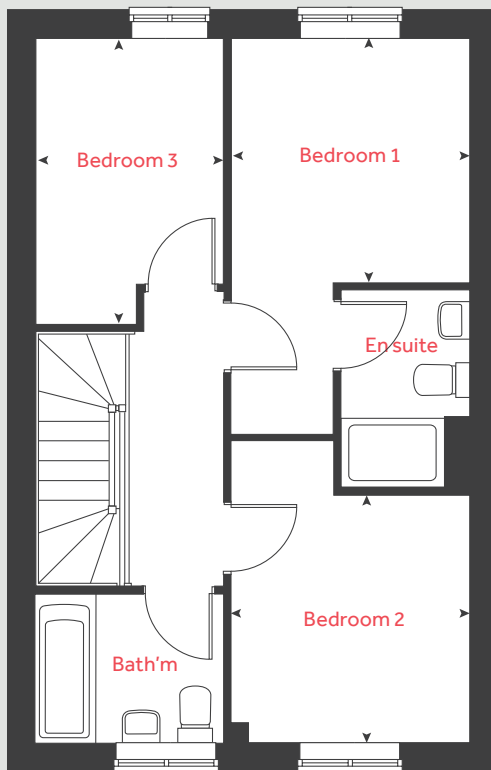
Linden
HOMES

The Eveleigh

3 bedroom home

Homes 86-89, 108, 109, 121, 122, 177 & 178

First floor



Ground floor

Kitchen / dining area
5.17m x 2.80m 17' 0" x 9' 2"

Living room
4.98m x 3.20m 16' 4" x 10' 6"

First floor

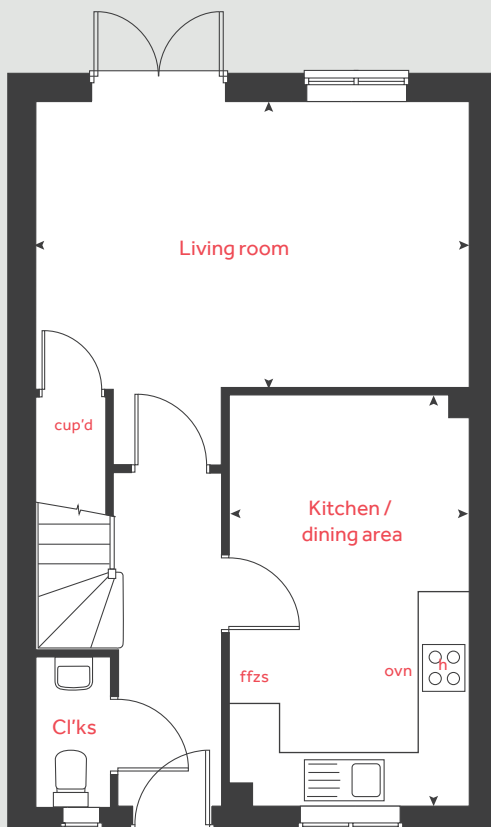
Bedroom 1
2.84m x 2.77m 9' 4" x 9' 1"

Bedroom 2
2.77m x 2.66m 9' 6" x 9' 1"

Bedroom 3
3.33m x 2.18m 10' 11" x 7' 2"

h	hob	cup'd	cupboard
ovn	oven	< >	measuring points
ffzs	fridge freezer space		

Ground floor



Please note, floorplans and dimensions are taken from architectural drawings and are for guidance only. Dimensions stated are within a tolerance of plus or minus 50mm. Overall dimensions are usually stated and there may be projections into these. With our continual improvement policy we constantly review our designs and specification to ensure we deliver the best products to our customers. Computer generated images not to scale. Finishes and materials may vary and landscaping is illustrative only. Kitchen layouts are indicative only and may change. To confirm specific details on our homes please see our sales consultant.

Produced by Vistry Group Design Studio.

When you have finished with this leaflet please recycle it.

WSTON GD59349 / 05.21

Linden
HOMES



The Pembroke

4 bedroom home

Great Oldbury

Stonehouse, Gloucestershire GL10 3RL | 01453 374015

lindenhomes.co.uk

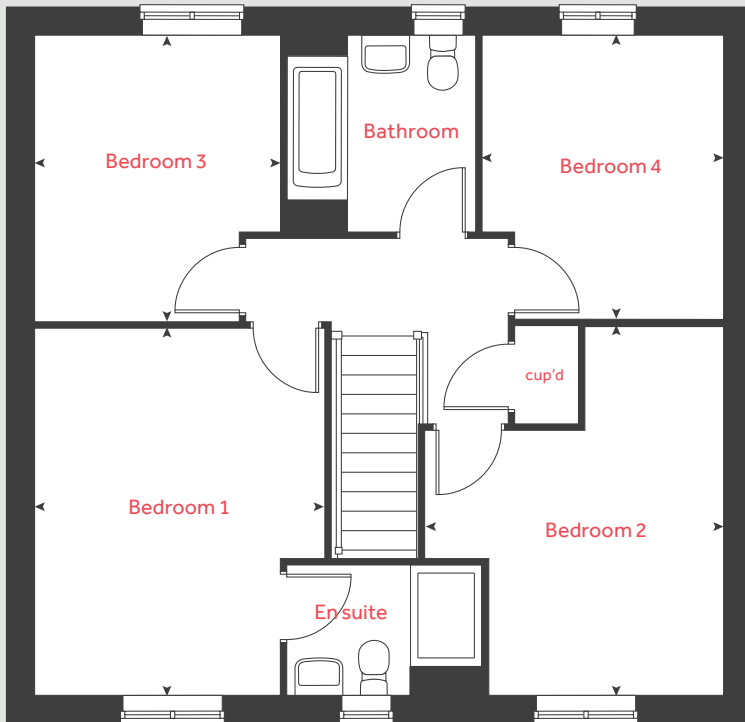
Linden
HOMES

The Pembroke

4 bedroom home

Homes 53, 75, 76, 77, 128,
129, 131, 144, 145, 147, 148
& 149

First floor



Ground floor

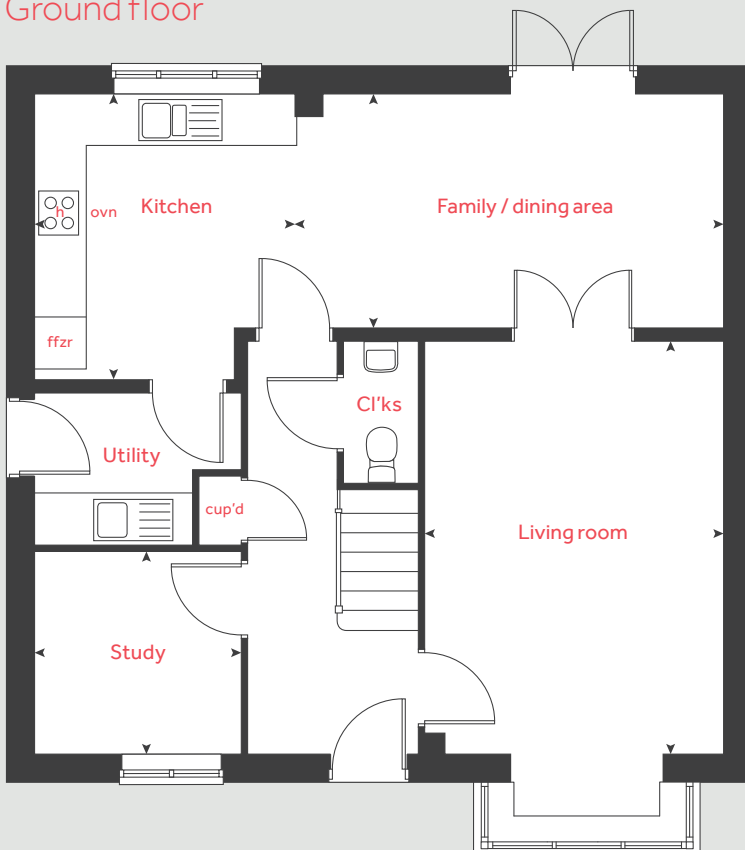
Kitchen	3.35m x 3.05m	11' 0" x 10' 0"
Living room	4.83m x 3.49m	15' 10" x 11' 5"
Family / dining area	5.02m x 2.75m	15' 10" x 11' 6"
Study	2.40m x 2.35m	7' 10" x 7' 9"

First floor

Bedroom 1	4.30m x 2.86m	14' 1" x 9' 5"
Bedroom 2	4.31m x 2.74m	14' 2" x 9' 0"
Bedroom 3	3.35m x 2.86m	11' 0" x 9' 5"
Bedroom 4	3.32m x 2.81m	10' 11" x 9' 3"

h	hob	cup'd	cupboard
ovn	oven	◀ ▶	measuring points
ffzr	fridge freezer		

Ground floor



Please note, floorplans and dimensions are taken from architectural drawings and are for guidance only. Dimensions stated are within a tolerance of plus or minus 50mm. Overall dimensions are usually stated and there may be projections into these. With our continual improvement policy we constantly review our designs and specification to ensure we deliver the best products to our customers. Computer generated images not to scale. Finishes and materials may vary and landscaping is illustrative only. Kitchen layouts are indicative only and may change. To confirm specific details on our homes please see our sales consultant.

Produced by Vistry Group Design Studio.

When you have finished with this leaflet please recycle it.

WSTON GD59349 / 05.21

Linden HOMES



The Mylne

4 bedroom home

Great Oldbury

Stonehouse, Gloucestershire GL10 3RL | 01453 374015

lindenhomes.co.uk

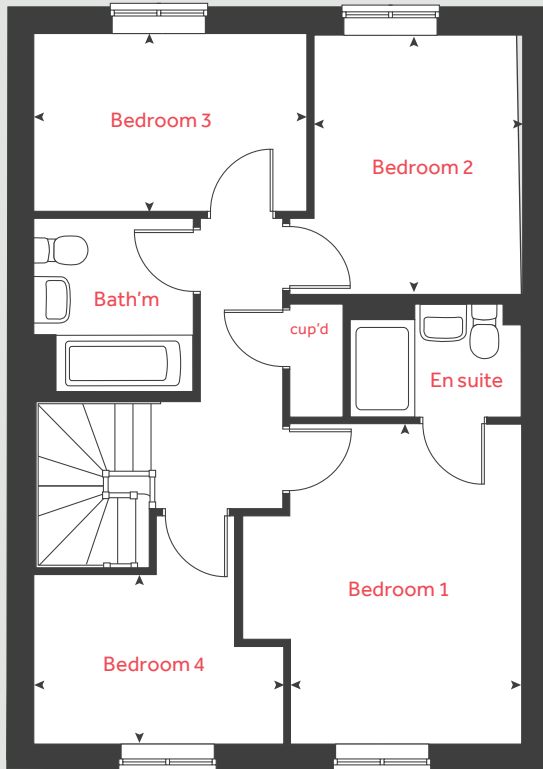
Linden
HOMES

The Mylne

4 bedroom home

Homes 3, 12, 65, 78, 124,
125, 126, 127, 130, 137,
138, 143 & 146

First floor



Ground floor

Kitchen / dining / family area

5.17m x 3.14m 17' 0" x 10' 4"

Living room

4.83m x 3.39m 15' 10" x 11' 2"

First floor

Bedroom 1

3.93m x 2.86m 12' 11" x 9' 5"

Bedroom 2

3.20m x 2.56m 10' 6" x 8' 5"

Bedroom 3

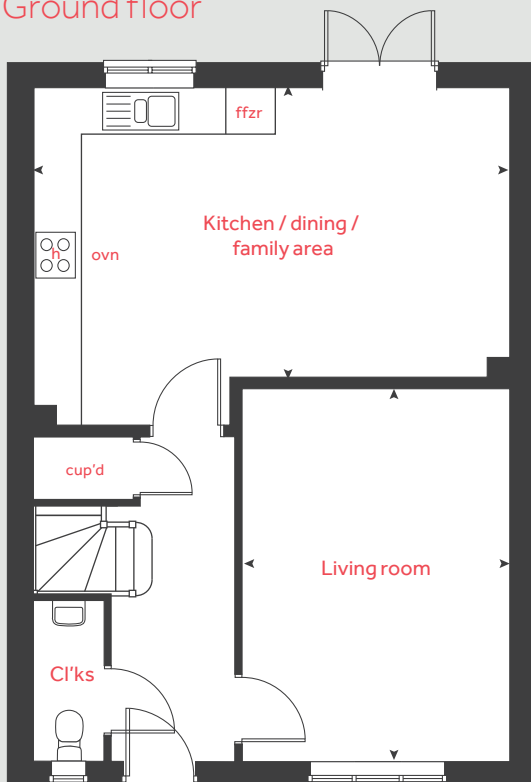
3.38m x 2.18m 11' 1" x 7' 2"

Bedroom 4

3.09m x 2.08m 10' 2" x 6' 10"

h	hob	cup'd	cupboard
ovn	oven	< >	measuring points
ffzr	fridge freezer		

Ground floor



Please note, floorplans and dimensions are taken from architectural drawings and are for guidance only. Dimensions stated are within a tolerance of plus or minus 50mm. Overall dimensions are usually stated and there may be projections into these. With our continual improvement policy we constantly review our designs and specification to ensure we deliver the best products to our customers. Computer generated images not to scale. Finishes and materials may vary and landscaping is illustrative only. Kitchen layouts are indicative only and may change. To confirm specific details on our homes please see our sales consultant.

Produced by Vistry Group Design Studio.

When you have finished with this leaflet please recycle it.

WSTON GD59349 / 05.21

Linden
HOMES



The Aslin

4 bedroom home

Great Oldbury

Stonehouse, Gloucestershire GL10 3RL | 01453 374015

lindenhomes.co.uk

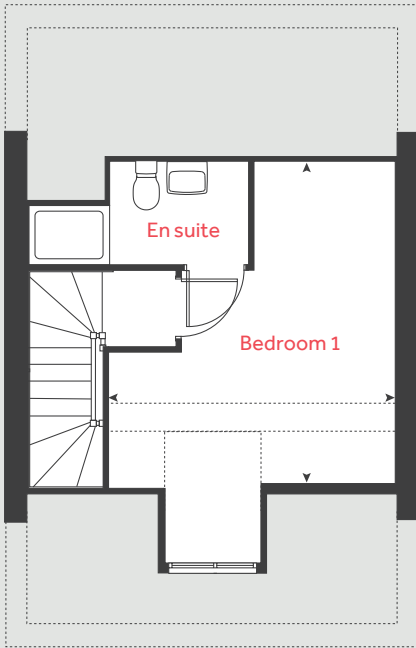
Linden
HOMES

The Aslin

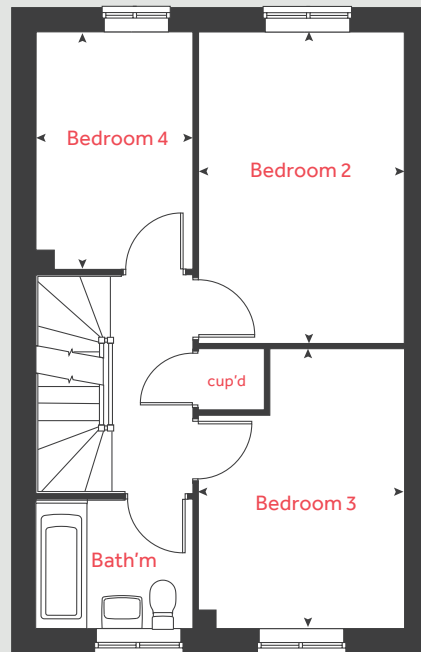
4 bedroom home

Homes 27-31, 54-55, 99,
100, 105-107, 110, 111, 116,
117 & 118

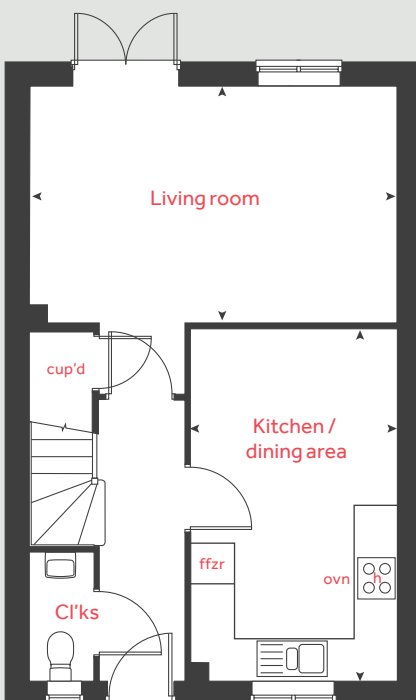
Second floor



First floor



Ground floor



Ground floor

Kitchen / dining area
4.87m x 2.80m 15' 8" x 9' 2"

Living room
4.98m x 3.21m 16' 4" x 10' 6"

First floor

Bedroom 2
4.20m x 2.78m 13' 10" x 9' 2"

Bedroom 3
3.78m x 2.78m 12' 5" x 9' 2"

Bedroom 4
3.20m x 2.12m 10' 6" x 7' 0"

Second floor

Bedroom 1
4.29m x 3.89m 14' 1" x 12' 9"

ffzr fridge freezer cup'd cupboard
h hob measuring points
ovn oven

Please note, floorplans and dimensions are taken from architectural drawings and are for guidance only. Dimensions stated are within a tolerance of plus or minus 50mm. Overall dimensions are usually stated and there may be projections into these. With our continual improvement policy we constantly review our designs and specification to ensure we deliver the best products to our customers. Computer generated images not to scale. Finishes and materials may vary and landscaping is illustrative only. Kitchen layouts are indicative only and may change. To confirm specific details on our homes please see our sales consultant.

Produced by Vistry Group Design Studio.

When you have finished with this leaflet please recycle it.

WSTON GD59349 / 05.21

Linden HOMES



The Leverton

4 bedroom home

Great Oldbury

Stonehouse, Gloucestershire GL10 3RL | 01453 374015

lindenhomes.co.uk

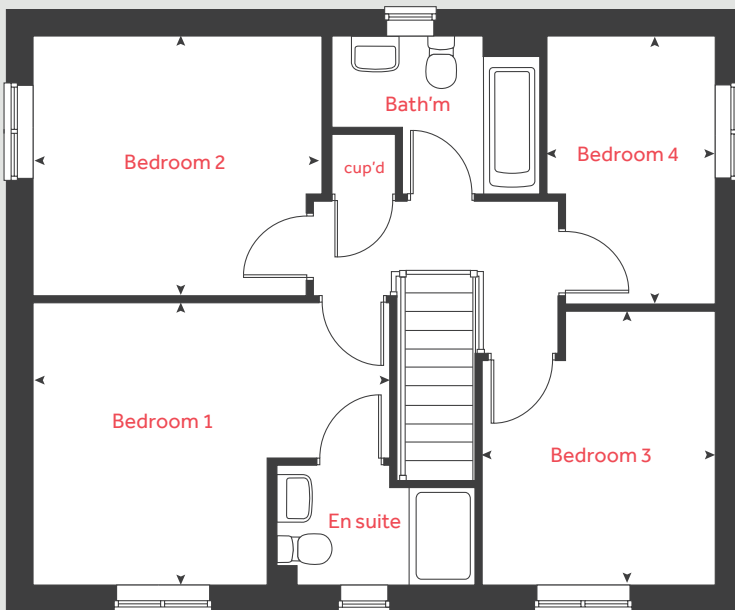
Linden
HOMES

The Leverton

4 bedroom home

Homes 10, 52, 79, 95, 96,
142 & 150

First floor



Ground floor

Kitchen	2.98m x 2.71m	9' 9" x 8' 11"
Dining area	4.04m x 2.80m	13' 2" x 9' 3"
Living room	4.85m x 3.39m	15' 11" x 11' 2"
Study	3.39m x 1.82m	11' 2" x 6' 0"

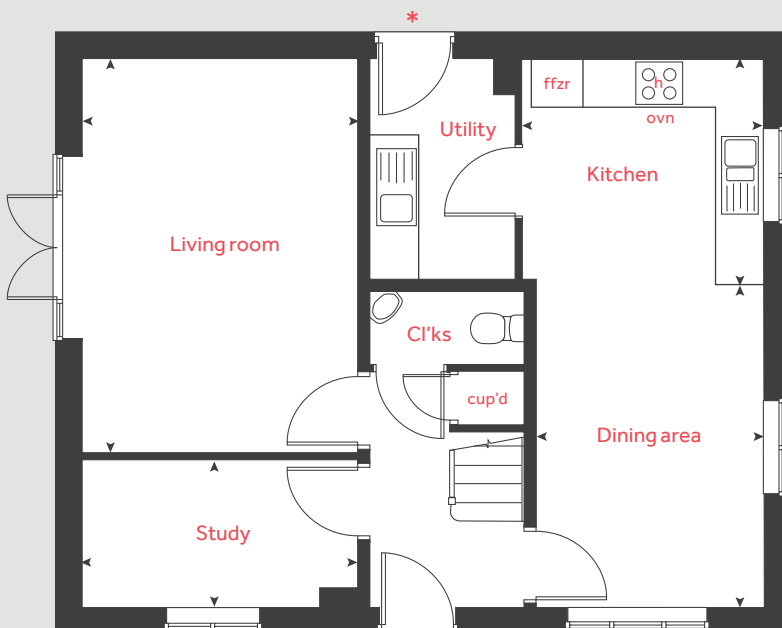
First floor

Bedroom 1	3.47m x 2.88m	11' 5" x 9' 6"
Bedroom 2	3.55m x 3.19m	11' 8" x 10' 6"
Bedroom 3	3.37m x 2.87m	11' 1" x 9' 5"
Bedroom 4	3.30m x 2.07m	10' 10" x 6' 10"

h	hob	cup'd	cupboard
ovn	oven	◀ ▶	measuring points
ffzr	fridge freezer		

* Utility door applies to selected plots only. Please see sales consultant for further details.

Ground floor



Please note, floorplans and dimensions are taken from architectural drawings and are for guidance only. Dimensions stated are within a tolerance of plus or minus 50mm. Overall dimensions are usually stated and there may be projections into these. With our continual improvement policy we constantly review our designs and specification to ensure we deliver the best products to our customers. Computer generated images not to scale. Finishes and materials may vary and landscaping is illustrative only. Kitchen layouts are indicative only and may change. To confirm specific details on our homes please see our sales consultant.

Produced by Vistry Group Design Studio.

When you have finished with this leaflet please recycle it.

WSTON GD59349 / 05.21

Linden
HOMES