

home.

PER CALENDAR MONTH

£1,850

Ringwood Drive, Leigh-On-Sea

15 Ringwood Drive, Leigh-On-Sea, Essex, SS9 5HG

Home Estate Agents are privileged to offer to let this fantastic four bedroom semi-detached family home situated in a quiet residential area close to local schools, shops and transport links. The property benefits from a large sunny garden with decking, patio and astro-turf lawn as well as off street parking to rear.

The property is situated in a popular location within a few minutes walk of local shopping facilities and transport links to Southend and Rayleigh.



Lounge 12'11" x 16'4"

Laminate flooring, electric fire with wooden surround, dado rail, coved cornice, pendant light.

Kitchen Diner 15'11" x 14'9"

Double glazed window to front, radiator, storage cupboard, dado rail, coved cornice into the kitchen area with wooden worksurfaces with wall and base units including glass display cabinets, spotlights, two radiators, range master double oven with five ring gas hob and extractor over, integrated washing machine, large sink with taps, integrated dishwasher, double glazed window to side, part tiled walls, two velux skylight windows, door leading to garden, space for under counter fridge and freezer.

WC

Tiled flooring, WC, obscure glass double glazed window, extractor, spotlights, wash hand basin with taps, part tiled walls.

Bedroom One 9'11" x 11'10"

Fitted carpet, radiator, large double glazed window with curtains, coved cornice, single pendant light, understairs storage cupboard.

Bedroom Two 9'11" x 10'4"

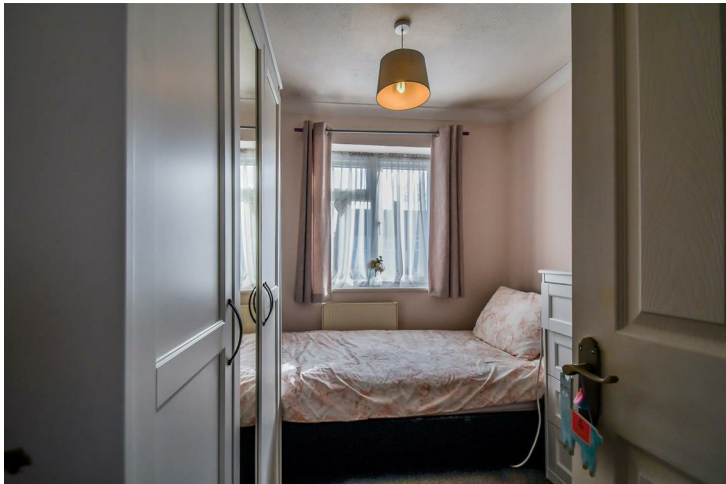
Fitted carpet, coved cornice, single pendant light, double glazed window to front, radiator.

Bedroom three 8'0" x 8'9"

Fitted carpet, double glazed window to front, single pendant light, coved cornice, radiator, cupboard.



images and details which were taken in the past and therefore a viewing is the always strongly recommended. After 01st June 2019, the tenancy deposit will be the equivalent of five weeks rent (subject to the monthly rental amount). The tenancy deposit is calculated at the monthly rental amount, multiplied by 12 (number of months in the year), divided by 52 (number of weeks in the year), multiplied by 5.



Bathroom

Tiled flooring and walls, wc, wash hand basin with taps, obscure glass double glazed window, spotlights, extractor, rolled top bath with up and over shower, wall mounted mirrored cabinet, radiator.

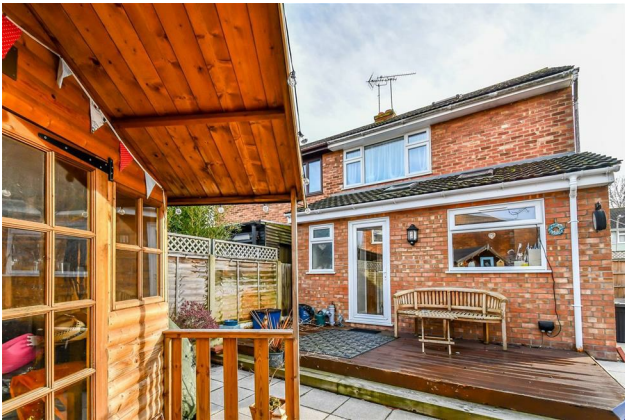
Loft room 15'4" x 10'2"

Fitted carpet, eaves storage cupboards to both sides, two velux windows, spotlights.

Agency Notes

After the 01st February 2016 all applicants over the age of 18 years old will need to undergo "Right to rent" checks. Please note that some properties may be advertised using





Per Calendar Month £1,850

HOME - The Estate Agent of Leigh
The Old Bank, 26 Broadway, Leigh-on-Sea, Essex, SS9 1AW. Tel: 01702 480033

Agents Note: Whilst every care has been taken to prepare these particulars, they are for guidance purposes only. All measurements are approximate and are for general guidance purposes only and whilst every care has been taken to ensure their accuracy, they should not be relied upon and potential buyers/tenants are advised to recheck the measurements

PROPERTY MISDESCRIPTIONS ACT 1991: The Agents has not tested any apparatus, equipment, fixtures and fittings, or services, so cannot verify that they are in working order or fit for the purpose. The buyer is advised to obtain verification from his or her Professional Buyer. References to the Tenure of the property are based on information supplied by the Vendor. The agents have not had sight of the title documents. The buyer is advised to obtain verification from their Solicitor. You are advised to check the availability of any property before travelling any distance to view.

Energy Efficiency Rating		
	Current	Potential
Very energy efficient - lower running costs		
(92 plus) A		
(81-91) B		84
(69-80) C	72	
(55-68) D		
(39-54) E		
(21-38) F		
(1-20) G		
Not energy efficient - higher running costs		
England & Wales		EU Directive 2002/91/EC