

home.

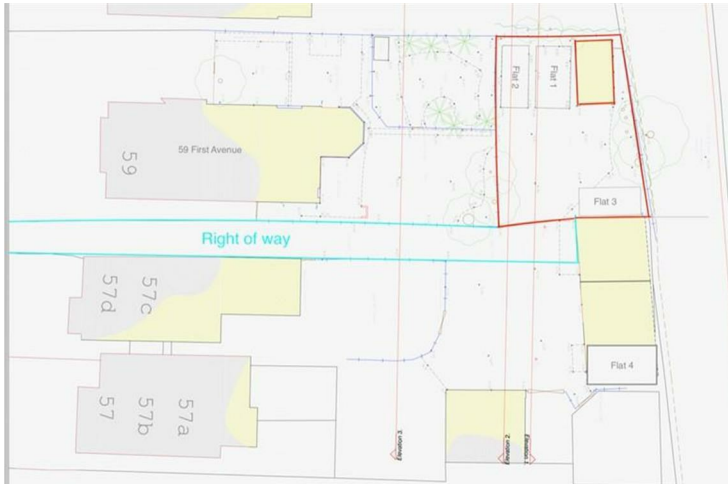
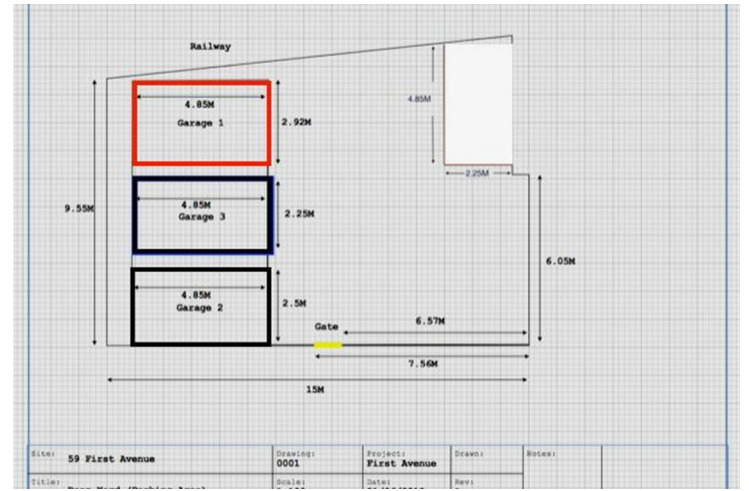
£55,000

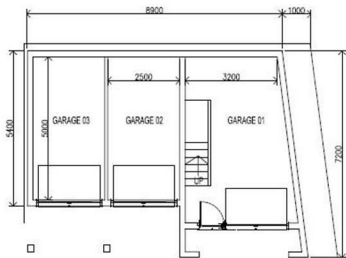
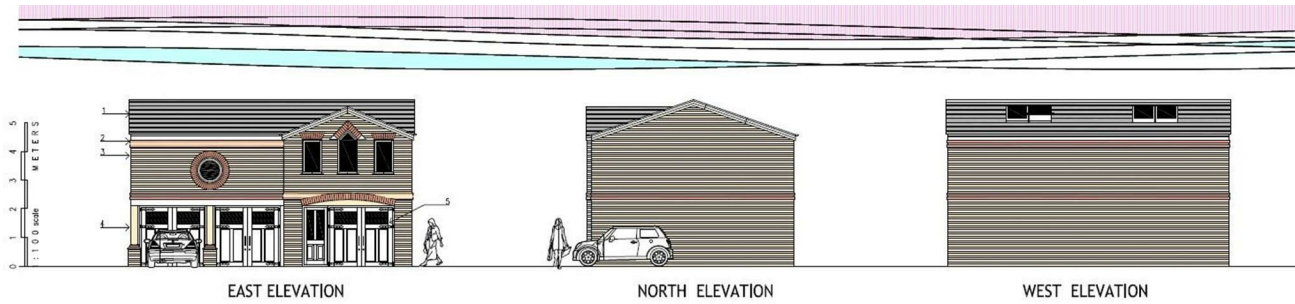
First Avenue, Westcliff-on-Sea

Garage, Rear Of, 59 First Avenue, Westcliff-on-Sea, Essex, SS0 8HP

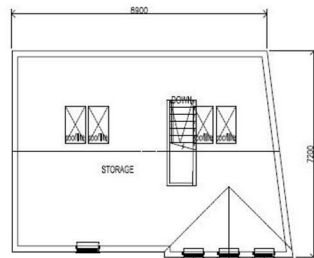
Situated in this sought after location within a few minutes walk of the beach and mainline railway station is this detached Freehold garage (measuring 16'1 x 9'1 internally) which comes with potential planning to create a first floor storage area measuring approx. 29' x 23' along with two additional car ports (which will be owned and occupied by the other residents). Sitting on a plot measuring 49' x 31', it also comes with 2 additional parking spaces.



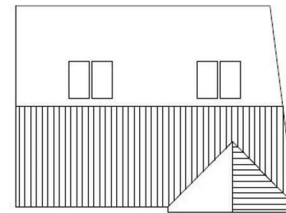




PROPOSED GROUND FLOOR



PROPOSED FIRST FLOOR



£55,000 Freehold

HOME - The Estate Agent of Leigh
The Old Bank, 26 Broadway, Leigh-on-Sea, Essex, SS9 1AW. Tel: 01702 480033

Agents Note: Whilst every care has been taken to prepare these particulars, they are for guidance purposes only. All measurements are approximate and are for general guidance purposes only and whilst every care has been taken to ensure their accuracy, they should not be relied upon and potential buyers/tenants are advised to recheck the measurements

PROPERTY MISDESCRIPTIONS ACT 1991: The Agents has not tested any apparatus, equipment, fixtures and fittings, or services, so cannot verify that they are in working order or fit for the purpose. The buyer is advised to obtain verification from his or her Professional Buyer. References to the Tenure of the property are based on information supplied by the Vendor. The agents have not had sight of the title documents. The buyer is advised to obtain verification from their Solicitor. You are advised to check the availability of any property before travelling any distance to view.