

home.

£230,000

Finchley Road

Westcliff-On-Sea, SS0 8AE



PROPERTY SUMMARY

Home Estate Agents are pleased to offer for sale this superb top floor apartment situated within popular Westcliff-on-Sea residential location close to nearby seafront, high street and mainline railway station. This fantastic flat provides approximately 659 sq ft of accommodation featuring a spacious lounge, large double bedroom and modern kitchen. Externally, this wonderful home also boasts a private sun terrace.

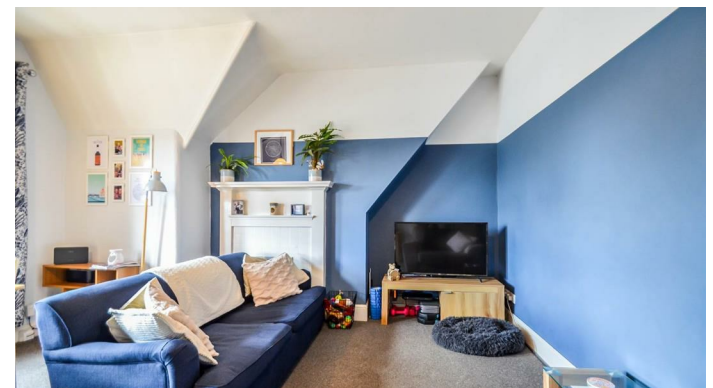
1



1



2

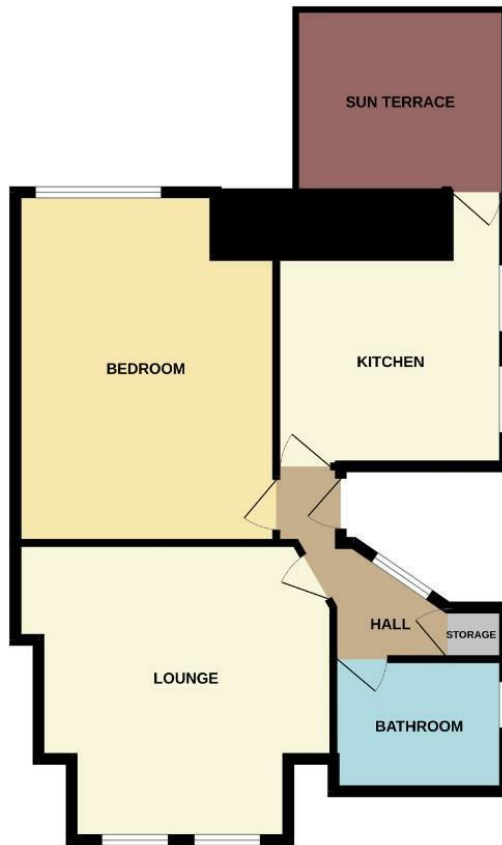








TOP FLOOR
659 sq.ft. approx.



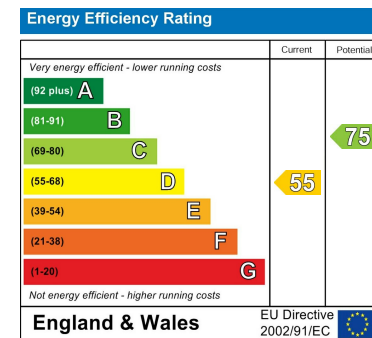
TOTAL FLOOR AREA: 659 sq.ft. approx.
Made with: Metropix ©2024

LOCAL AUTHORITY
Southend City Council

TENURE
Share of Freehold

COUNCIL TAX BAND
A

VIEWINGS
By prior appointment only



Agents Note: Whilst every care has been taken to prepare these particulars, they are for guidance purposes only. All measurements are approximate and are for general guidance purposes only and whilst every care has been taken to ensure their accuracy, they should not be relied upon and potential buyers/tenants are advised to recheck the measurements

home.

OFFICE ADDRESS

The Old Bank
26 Broadway
Leigh on Sea
Essex
SS9 1AN

OFFICE DETAILS

info@homeofleigh.com
01702 480033
homeofleigh.com