



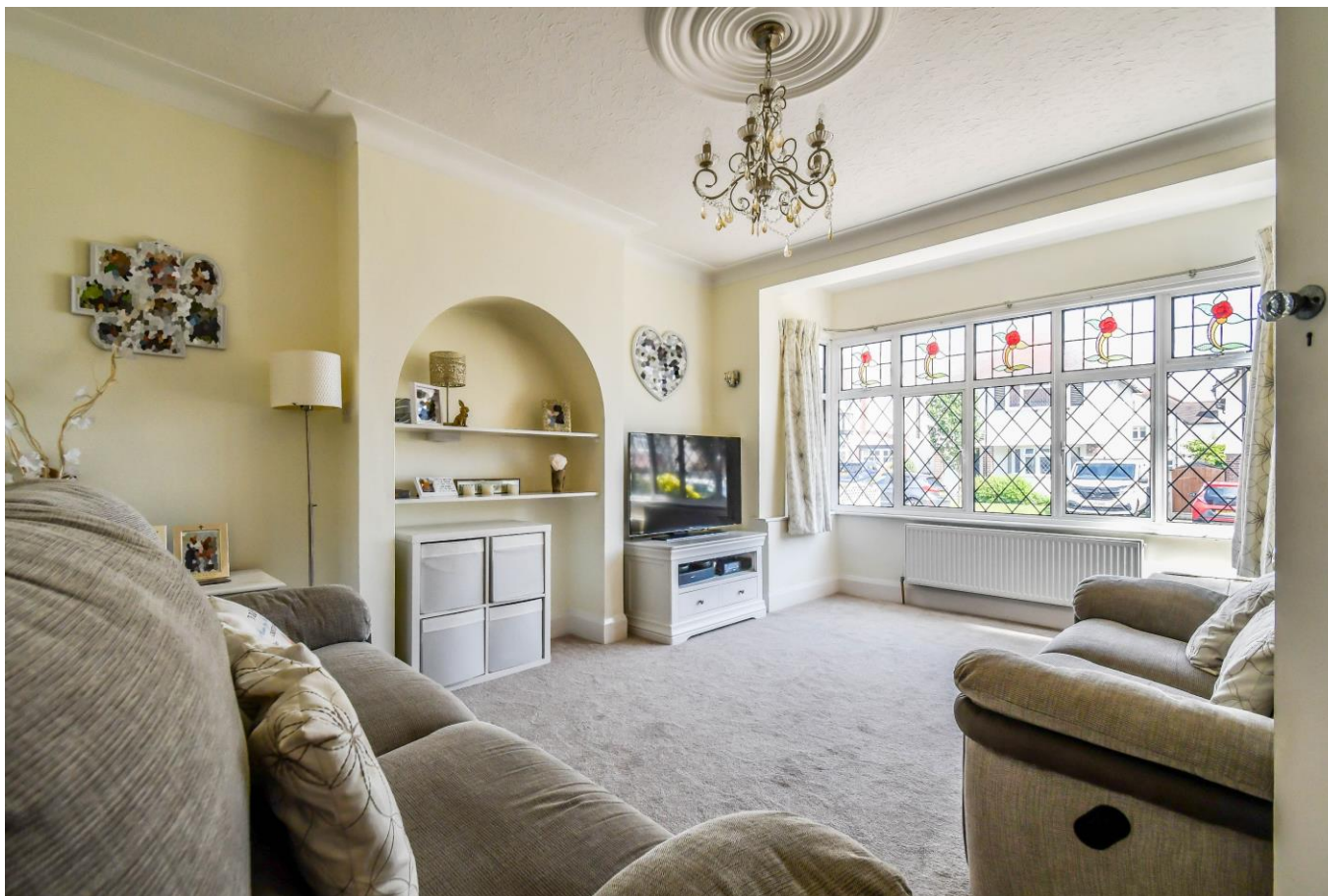
31 Chapmans Walk

31 Chapmans Walk Leigh-on-Sea Essex SS9 2UZ

Home Estate Agents are privileged with instruction to offer for sale this stunning four bedroom semi-detached house located within the desirable Marine Estate in Leigh-on-Sea. This attractive, light and airy family home boasts a open-plan kitchen/family room, a beautifully presented rear garden and off street parking to the front.

The ground floor accommodation comprises; welcoming entrance hall, living room, cloakroom and a fantastic open-plan kitchen family room. To the first floor this immaculate home contains; landing, modern family bathroom and four bedrooms. Externally, the house offers a wonderfully presented rear garden measuring approximately 48ft, garage and driveway to front enabling off street parking.

The property is served by gas central heating and offers replacement double glazing -with some leaded light windows.



Located in Chapman's Walk, a quiet non-thoroughfare within the sought after Marine Estate in Leigh-on-Sea, this impressive home is within close proximity to all local amenities which includes the seafront and mainline railway station for commuters. Also within a short stroll is Leigh's fashionable Broadway and its array of bars, cafés, restaurants and popular boutiques. For prospective buyers with an eye on children's education, the property falls within catchment for the desirable West Leigh Schools.

We strongly recommend internal viewings to appreciate this character semi-detached house.

Entrance

Solid wood entrance door with a glazed panel and adjacent lead light stained glass windows leading to:

Entrance Hall

Laminate wood effect flooring, lead light stained glass window to side, coved cornice, picture rail, stairs leading to first floor with understairs storage cupboard, feature brick fireplace. Doors to:

Ground Floor Cloakroom

Laminate wood effect flooring, WC, wash hand basin with mixer tap and vanity unit.



spotlights, two vertical radiators and one horizontal double radiator.

First Floor Landing

Fitted carpet, access to boarded loft, radiator. Doors to:

Bedroom One 16'7 x 11'5

Fitted carpet, double glazed lead light bay window to front, stained glass window to side, radiator, coved cornice.

Bedroom Two 13'0 x 12'2

Fitted carpet, double glazed window to rear, fitted wardrobes, storage cupboard, radiator.

Bedroom Three 12'0 x 10'0

Fitted carpet, double glazed bay window offering views towards the estuary.

Bedroom Four 10'2 x 7'5

Fitted carpet, double glazed lead light window to front, built in wardrobes, radiator, storage cupboard.

Bathroom 11'7 x 6'4

Vinyl flooring, two double glazed window and further double glazed stained glass window both to side, WC, wash hand basin with mixer tap and vanity unit, WC, panelled bath with mixer tap and shower attachment, shower cubicle, heated towel rail, radiator, spotlights.



Lounge 16'1 x 12'4

Fitted carpet, lead light stained glass bay window to front, two radiators, arched recess with shelving, wall light points, coved cornice.

Kitchen Family Room 22'6 x 12'7

Wood effect laminate flooring, double glazed bi-folding doors leading to the rear garden, double glazed door to side, range of wall and base units and centre island with Quartz worksurfaces, integrated dishwasher, washing machine and tumble dryer, space for American style fridge freezer, integrated NEFF combi/microwave oven and NEFF oven, induction hob with extractor over, pull out larder cupboard,

Externally

Garage

Garage with double doors, light & power housing Vaillant boiler, personal door to rear.

Rear Garden

West backing rear garden measuring approximately 48 ft commencing with patio area and the remainder being laid to lawn, garden shed with light and power, raised border to the rear, external water supply, electric vehicle charging point, side access to front.

Frontage

Paved providing off street parking.











Made with MetroPic ©2024



Price £775,000 Freehold

HOME - The Estate Agent of Leigh
 The Old Bank, 26 Broadway, Leigh-on-Sea, Essex, SS9 1AW. Tel: 01702 480033

PROPERTY MISDESCRIPTIONS ACT 1991: The Agents has not tested any apparatus, equipment, fixtures and fittings, or services, so cannot verify that they are in working order or fit for the purpose. The buyer is advised to obtain verification from his or her Professional Buyer. References to the Tenure of the property are based on information supplied by the Vendor. The agents have not had sight of the title documents. The buyer is advised to obtain verification from their Solicitor. You are advised to check the availability of any property before travelling any distance to view.

HP1222 Printed by Ravensworth 01670 713330