

GATEHOUSE COTTAGES



GATEHOUSE COTTAGES

FERNHURST, SURREY, GU27 3HW

A charming three/four bedroom, two bathroom Gatehouse cottage offering flexible family accommodation situated in a peaceful location on a rural country lane with a large garden and parking.

Available: 24th October 2025

£2,950 PCM (Per Calendar Month)

House - Detached, 3 Bedroom, 2 Bathroom, 2 Reception, Unfurnished

Key Features

- Rural peaceful location
- Flexible accommodation
- Good size mature garden
- 4 bedrooms





THE PROPERTY

Within a short walk of National Trust Land and a short drive of the village centre which offers day to day shops. Haslemere Town Centre with the main line station to London Waterloo in under one hour is approximately a ten minute drive.



In brief detail the accommodation comprises:

Ground Floor

Shared courtyard. Front door opens to an open plan kitchen/dining room. Vast drawing room, with wood burning stove. Bedroom 4, a single room, family bathroom, master bedroom overlooking the garden with en-suite shower room, bedroom 3, a double room with door to rear hallway. Utility room with washing machine and door to storage room and oil tank.

First Floor

A spacious double room with sloping ceilings and pleasant views over the garden and an en-suite shower room.

Outside

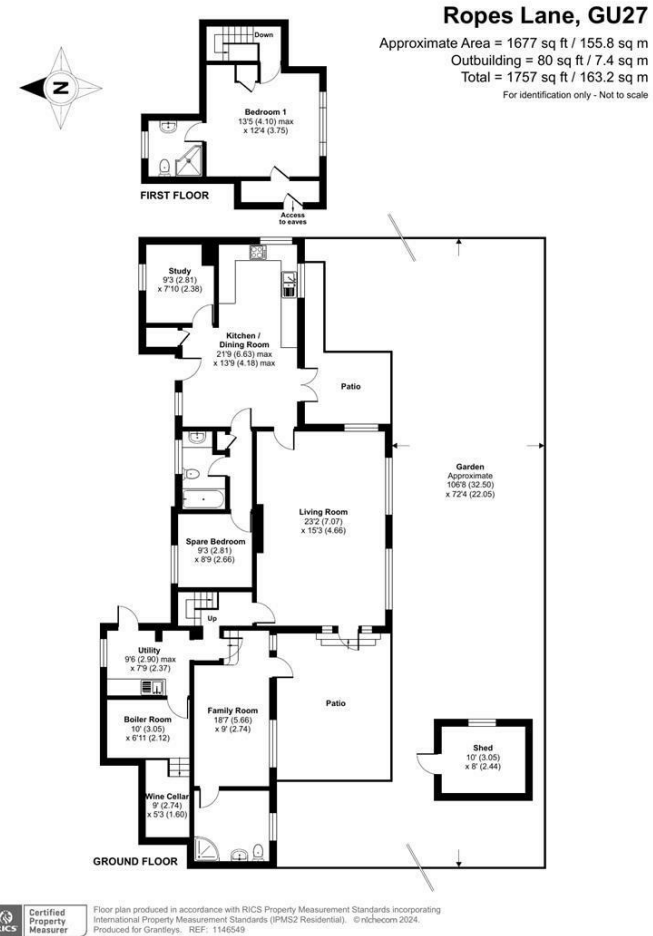
Parking is available in the shared courtyard at the front of the cottage. To the rear of the cottage is a large mature garden, leading to further parking and a car port.

Council Tax Band 'E'

EPC Rating "C"

Private drainage

Oil fired central heating



Haslemere Lettings

24 West Street
Haslemere
Surrey
GU27 2AH

Tel: 01428 651241

