

WEST CLOSE



WEST CLOSE

FERNHURST, GU27 3JT

This 3 bedroom semi-detached property provides light and spacious accommodation. The village centre which provides good day to day shopping facilities and a primary school are within a short walk. The nearby towns of Haslemere and Midhurst are approximately 10 minutes drive. AVAILABLE IMMEDIATELY.

Available: 28th November 2025

£1,750 PCM (Per Calendar Month)

House - Semi-Detached, 3 Bedroom, 1 Bathroom, 1 Reception,
Unfurnished

Key Features

- AVAILABLE IMMEDIATELY
- Completely re-decorated and re-carpeted throughout
- New bathroom
- 3 bedrooms
- Garden & Garage
- Within walk of the village and Primary School





THE PROPERTY

This semi-detached property provides light and spacious accommodation and is presented in excellent order having just been re-decorated and re-carpeted throughout.



Accommodation

Entrance hall. Cloakroom, w.c and hand wash basin. Kitchen, fitted and equipped kitchen with fridge, washing machine and electric hob and oven. Larder cupboard and door to driveway. Reception room, a spacious room light double aspect room with double doors opening to the rear garden.

First floor, landing with airing cupboard. Bedroom 1, a good size front aspect double room with built in mirrored wardrobes.. Bedroom 2, a rear aspect double room with built in cupboard. Bedroom 3, a front aspect single room. Bathroom, brand new suite comprising bath with power shower over, w.c and hand wash basin and heated towel rail.

Outside, there is off road parking for at least two cars, a single garage and front and rear gardens.

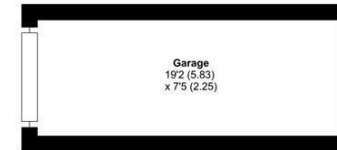
Council Tax Band 'D'
EPC Rating 'E'
Mains gas central heating.
Mains drainage.

Holding deposit payable to one week's rent = £403
Tenancy deposit equivalent to five weeks' rent = £2019

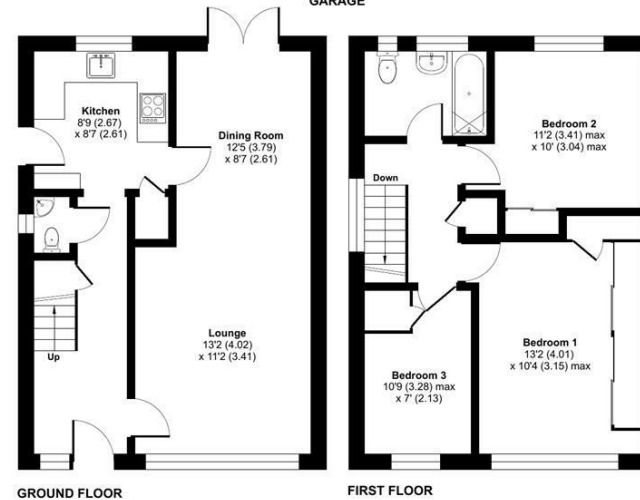


West Close, Fernhurst, Haslemere, GU27

Approximate Area = 902 sq ft / 83.7 sq m
Garage = 141 sq ft / 13 sq m
Total = 1043 sq ft / 96.8 sq m
For identification only - Not to scale



GARAGE



Floor plan produced in accordance with RICS Property Measurement 2nd Edition, incorporating International Property Measurement Standards (IPMS2 Residential). © rickhecom 2025. Produced for Grantley. REF: 1381919

Haslemere Lettings

24 West Street
Haslemere
Surrey
GU27 2AH

Tel: 01428 651241

