

GRAYSWOOD ROAD





GRAYSWOOD ROAD HASLEMERE, GU27 2BP

This refurbished ground floor, two double bedroom, two bathroom flat located within walking distance of Haslemere High Street is available immediately.

Available: 27th June 2024

£1,400 PCM (Per Calendar Month)

Flat - 2 Bedroom - 2 Bathroom - 1 Reception

Key Features

- Refurbished ground floor 2 bedroom flat ▪ Ensuite shower room and separate bathroom
- Within walking distance of Haslemere High Street Resident parking space

THE PROPERTY

A super ground floor two double bedroom flat, within walking distance of the Town Centre presented in excellent order.



Beech Court is a smart select development of purpose built flats located on the Grayswood Road.

The flat has recently been upgraded with a new kitchen, bathroom and shower room. There are well maintained communal grounds and a resident parking space.

In brief detail, the accommodation comprises:
Communal entrance hall. Front door to flat. Entrance hall, fitted and equipped kitchen comprising, washer/dryer, fridge/freezer, dishwasher, hob, electric oven and extractor over. Good size double aspect reception room, spacious double bedroom with range of built in wardrobes. Separate bathroom. Guest double bedroom with en-suite shower room.

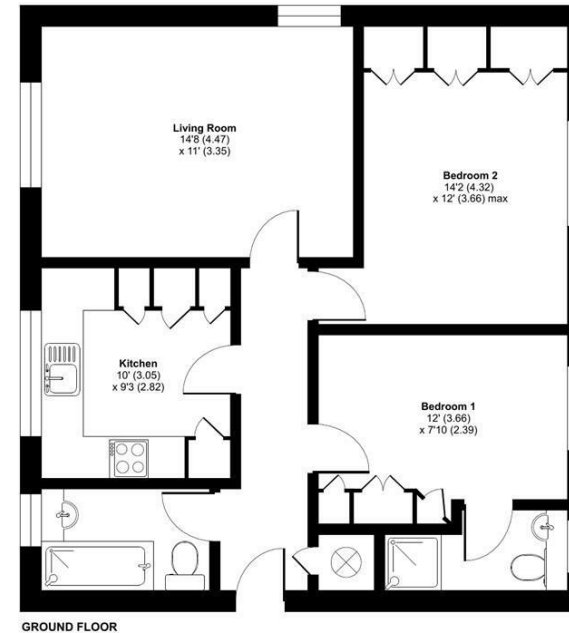
Outside : communal grounds and resident parking space.

Mains gas. mains drainage.
Council Tax - D
EPC Rating D
Available immediately.



Beech Court, Grayswood Road, Haslemere, GU27

Approximate Area = 670 sq ft / 62.2 sq m
For identification only - Not to scale



 Floor plan produced in accordance with RICS Property Measurement Standards incorporating International Property Measurement Standards (IPMS2 Residential). © nichecom 2024. Produced for Grantleys. REF: 1136499

Haslemere Lettings

24 West Street
Haslemere
Surrey
GU27 2AH

Tel: 01428 651241

