



GUIDE PRICE

£550,000

Gleton Avenue

Hove, BN3 8LN

PROPERTY SUMMARY

GUIDE PRICE £550,000 - £575,000. We are delighted to bring to the open market this charming four bedroom extended chalet bungalow.

The bathroom is well-appointed, catering to the needs of a busy household. One of the standout features of this home is the large south-facing garden, which invites an abundance of natural light and provides a lovely outdoor space for gardening, play, or simply enjoying the sunshine.

Additionally, the property includes off-road parking for two vehicles, a valuable asset in this sought-after location. Gleton Avenue is known for its friendly community, proximity to local amenities and catchment area to good rated primary and secondary schools, making it an ideal choice for families and professionals alike.

This semi-detached chalet bungalow presents a wonderful opportunity to create lasting memories in a home that combines practicality with charm. Don't miss the chance to make this delightful property your own.

4



1



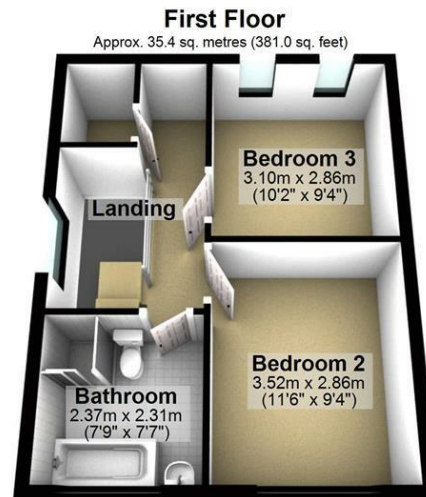
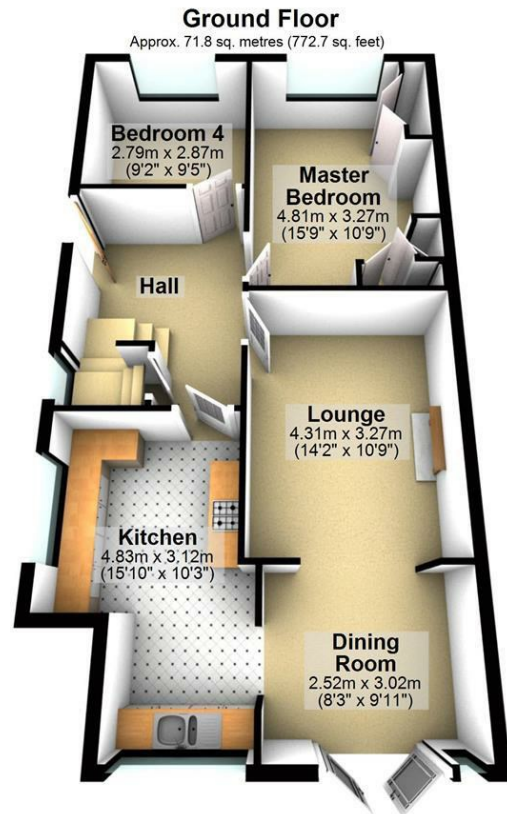
2











Total area: approx. 107.2 sq. metres (1153.7 sq. feet)

LOCAL AUTHORITY

TENURE
Freehold

COUNCIL TAX BAND
D

VIEWINGS
By prior appointment only



Energy Efficiency Rating		
	Current	Potential
Very energy efficient - lower running costs		
(92 plus) A		
(81-91) B		
(69-80) C		
(55-68) D		
(39-54) E		
(21-38) F		
(1-20) G		
Not energy efficient - higher running costs		
England & Wales	EU Directive 2002/91/EC	

Agents Note: Whilst every care has been taken to prepare these particulars, they are for guidance purposes only. All measurements are approximate and are for general guidance purposes only and whilst every care has been taken to ensure their accuracy, they should not be relied upon and potential buyers/tenants are advised to recheck the measurements



OFFICE ADDRESS
22 South Farm Road
Worthing
West Sussex
BN14 7AA

OFFICE DETAILS
01903 532225
worthing@localagent.co.uk
www.openhouseworthing.co.uk