

OFFERS OVER

£190,000

Castle Road

Worthing, BN13 1SN

PROPERTY SUMMARY

We are delighted to offer to the market this first floor purpose-built flat in the popular area of Tarring.

The flat boasts a long lease and is presented to the market chain-free. Some of the standout features of this property are the generous loft space, large south facing lounge and a good size double bedroom.

Residents will appreciate the allocated parking space, a valuable asset in this sought-after area, as well as the communal gardens that offer a pleasant outdoor retreat. The flat's location is particularly advantageous, with easy access to local amenities, transport links, and the beautiful coastline of Worthing, ensuring that everything you need is within reach.

This property presents an excellent opportunity for those looking to invest in a well-located flat with the potential for personalisation. Whether you are a first-time buyer or seeking a rental investment, this flat on Castle Road is not to be missed.

Remainder of 999 year lease

1

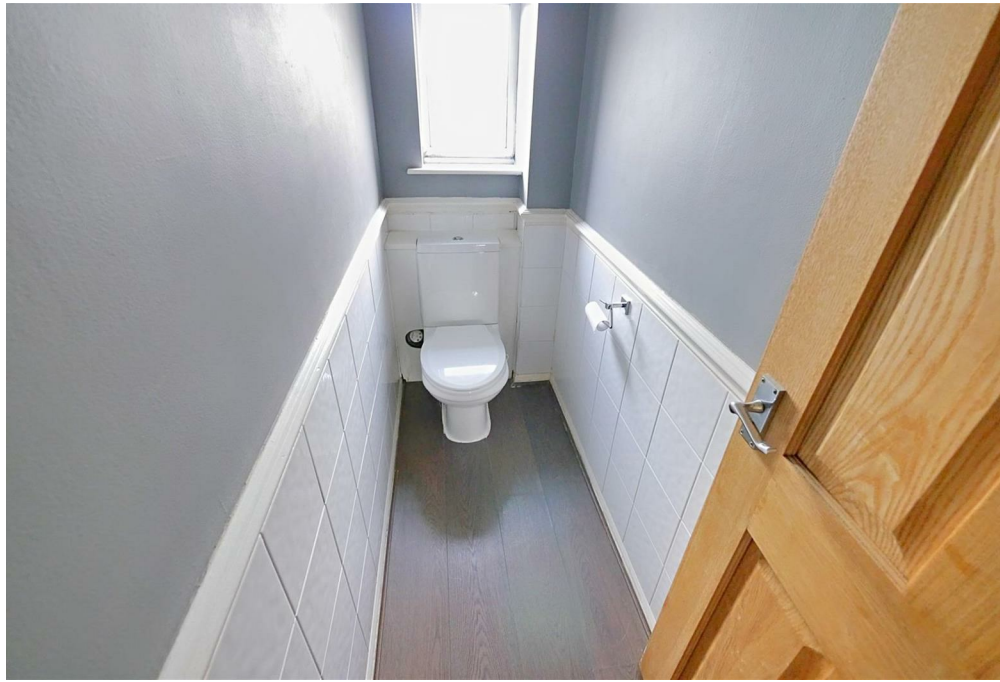


1



1



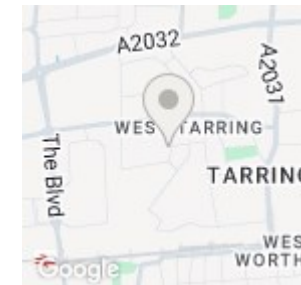
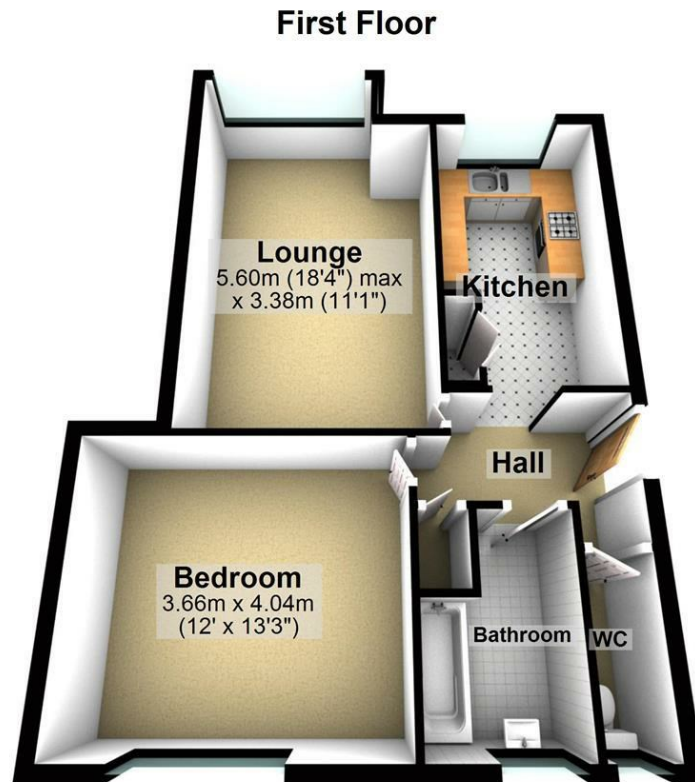


LOCAL AUTHORITY

TENURE
Leasehold

COUNCIL TAX BAND
B

VIEWINGS
By prior appointment only



Energy Efficiency Rating		
	Current	Potential
Very energy efficient - lower running costs		
(92 plus) A		
(81-91) B		
(69-80) C		77
(55-68) D	56	
(39-54) E		
(21-38) F		
(1-20) G		
Not energy efficient - higher running costs		
England & Wales		EU Directive 2002/91/EC

Agents Note: Whilst every care has been taken to prepare these particulars, they are for guidance purposes only. All measurements are approximate and are for general guidance purposes only and whilst every care has been taken to ensure their accuracy, they should not be relied upon and potential buyers/tenants are advised to recheck the measurements



OFFICE ADDRESS
22 South Farm Road
Worthing
West Sussex
BN14 7AA

OFFICE DETAILS
01903 532225
worthing@localagent.co.uk
www.openhouseworthing.co.uk