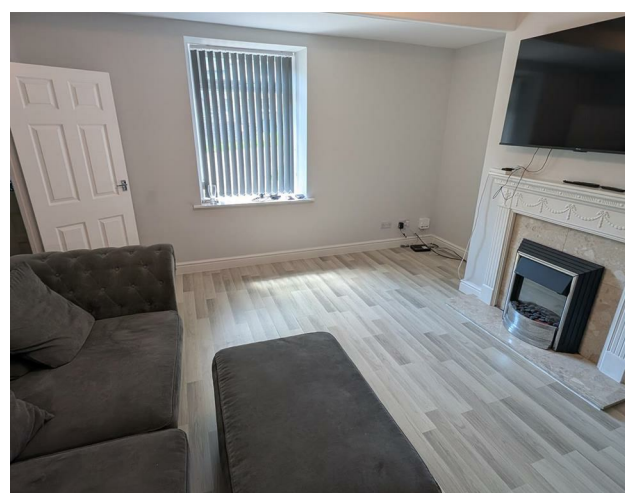


Nelson Street, Bradford, BD13 2PU  
£895 Per Month





A photograph of a bedroom. In the foreground, a large bed with a white, patterned duvet cover is visible. In the background, there is a white radiator on the wall. To the right, a window ledge holds various cleaning products and a small plant. The room is brightly lit, likely from the window.

## Nelson Street, Bradford, BD13 2PU

**£895 Per Month**

**Council Tax Band:**

Nestled on Nelson Street in Queensbury, this spacious three-bedroom house offers a perfect blend of modern living and convenience. Upon entering, you are welcomed into a spacious reception room, ideal for both relaxation and entertaining guests.

The three well-proportioned bedrooms provide ample space for family living or guest accommodation, ensuring comfort for all. The modern bathroom is stylishly appointed, and the contemporary kitchen is thoughtfully designed to meet the needs of today's lifestyle.

One of many great features of this property is the off-street parking, a valuable asset in this bustling area. Situated centrally in Queensbury, residents will enjoy easy access to local amenities, schools, and transport links, making it an ideal choice for families and professionals alike.

### **Living Room**

Laminate Flooring, Upvc Double Glazing, Gas Central Heating

### **Kitchen**

Laminate Flooring, Upvc Double Glazing, Gas Central Heating, Gas oven and Hob, Fridge Freezer

### **Bathroom**

Laminate Flooring, Upvc Double Glazing, Gas Central Heating, WC, Bath, Basin, Shower

### **Bedroom 1**

Carpeted throughout, Upvc Double Glazing, Gas Central Heating

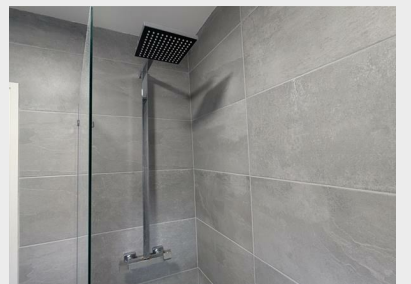
### **Bedroom 2**

Carpeted throughout, Upvc Double Glazing, Gas Central Heating

### **Bedroom 3**

Carpeted throughout, Upvc Double Glazing, Gas Central Heating







**Keighley**



Energy Efficiency Rating		
	Current	Potential
Very energy efficient - lower running costs		
(92 plus) <b>A</b>		<b>90</b>
(81-91) <b>B</b>		
(69-80) <b>C</b>	<b>67</b>	
(55-68) <b>D</b>		
(39-54) <b>E</b>		
(21-38) <b>F</b>		
(1-20) <b>G</b>		
Not energy efficient - higher running costs		
<b>England &amp; Wales</b>		EU Directive 2002/91/EC