

Astral View, Bradford, BD6 3AL

£795 Per Month

Council Tax Band: B



Welcome to this charming two-bedroom semi-detached house located in the desirable area of Astral View, Bradford. This delightful property boasts a spacious reception room, perfect for relaxing or entertaining guests, and a family kitchen that is both functional and inviting.

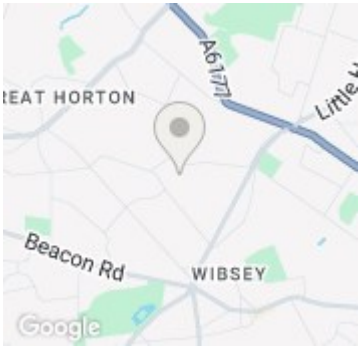
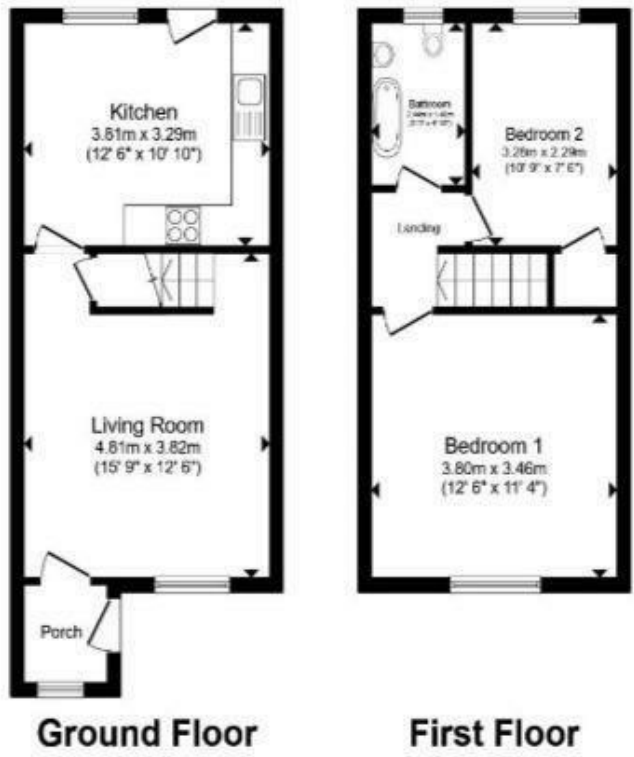
The generous sized rooms throughout the house provide ample space for comfortable living, and the large windows offer lovely views of the surrounding area, allowing natural light to flood in. The two well-proportioned bedrooms are ideal for a small family or for those seeking a guest room or home office.

This property has a rear garden, which presents a wonderful opportunity for outdoor enjoyment, whether it be for gardening, play, or simply unwinding in the fresh air. The property also has an allocated parking space for 1 car.

Situated in a popular location, this home is well-connected to local amenities, schools, and transport links, making it an excellent choice for families and professionals alike. This property offers a perfect blend of comfort, space, and convenience, making it a must-see for anyone looking to settle in Bradford. Don't miss the chance to make this lovely house your new home.



Keighley



Energy Efficiency Rating		
	Current	Potential
Very energy efficient - lower running costs		
(92 plus) A		
(81-91) B		
(69-80) C		
(55-68) D	68	75
(39-54) E		
(21-38) F		
(1-20) G		
Not energy efficient - higher running costs		
England & Wales		EU Directive 2002/91/EC