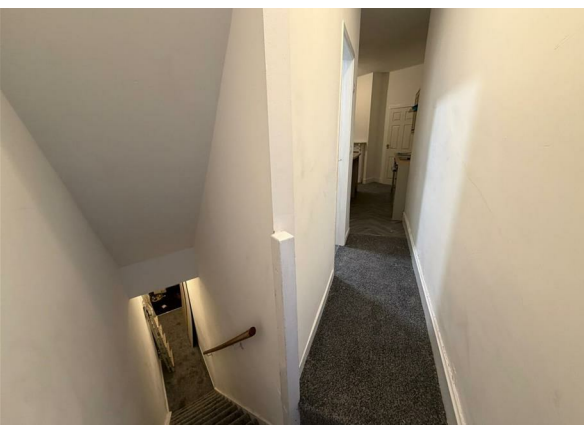


Victoria Road, Haworth, BD22 8LR

£695 Per Month

Council Tax Band: A



Nestled in the charming village of Haworth, this newly renovated flat on Victoria Road offers a delightful living experience in a prime location. The property features two well-proportioned bedrooms, making it ideal for couples or small families seeking a comfortable home.

Upon entering, you are welcomed into a spacious reception room that provides a perfect space for relaxation and entertaining. The modern design and fresh renovations create a warm and inviting atmosphere, ensuring that you feel right at home from the moment you step inside.

The flat also boasts a contemporary bathroom, thoughtfully designed to meet all your needs. With its convenient layout and stylish finishes, this property is ready for you to move in and make it your own.

Situated in a sought-after area, residents will enjoy easy access to local amenities, picturesque walks, and the rich history that Haworth is renowned for. This property is available for long-term let, making it an excellent choice for those looking to settle in this beautiful part of West Yorkshire.

Do not miss the opportunity to secure this lovely flat in a vibrant community. Contact us today to arrange a viewing and experience the charm of this property for yourself.



Keighley



Energy Efficiency Rating		
	Current	Potential
Very energy efficient - lower running costs		
(92 plus) A		
(81-91) B		
(69-80) C		
(55-68) D		
(39-54) E	51	59
(21-38) F		
(1-20) G		
Not energy efficient - higher running costs		
England & Wales	EU Directive 2002/91/EC	