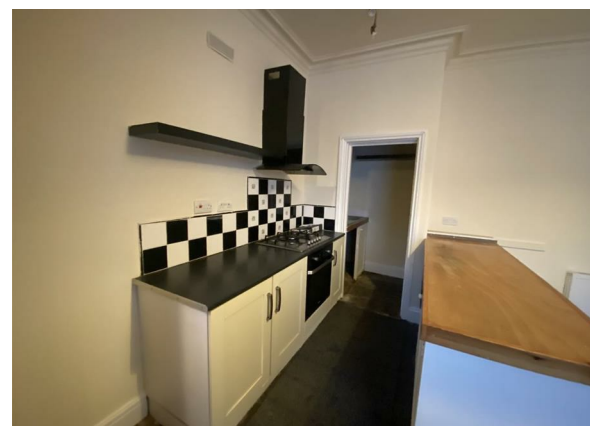


Ewart Street, Great Horton, Bradford, Bradford, West Yorkshire, BD7
3PN
£750 Per Month



Nestled in the charming area of Great Horton, Bradford, this delightful terraced house on Ewart Street offers a perfect blend of comfort and convenience. With two well-proportioned bedrooms, this property is ideal for small families, couples, or individuals seeking a cosy home.

Upon entering, you are welcomed into a spacious reception room that provides a warm and inviting atmosphere, perfect for relaxation or entertaining guests. The layout is designed to maximise space and light, creating a pleasant environment throughout the home.

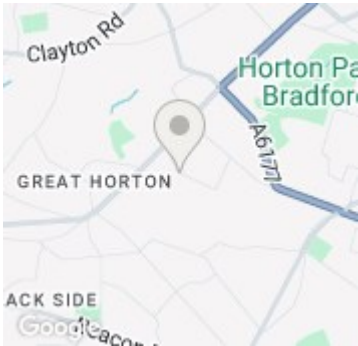
The property features a functional bathroom, ensuring all essential amenities are readily available. The kitchen, while not specified, typically offers ample space for culinary pursuits, making it a delightful area for preparing meals and enjoying family time.

The house provides added privacy and a sense of space, with potential for outdoor enjoyment. The surrounding area of Great Horton is known for its community spirit and accessibility to local amenities, including shops, schools, and parks, making it a desirable location for those looking to settle in Bradford.

This property presents an excellent opportunity for anyone seeking a charming home in a vibrant neighbourhood. With its appealing features and convenient location, it is certainly worth considering for your next move.



Keighley



Energy Efficiency Rating		
	Current	Potential
Very energy efficient - lower running costs		
(92 plus) A		88
(81-91) B		
(69-80) C		
(55-68) D	66	
(39-54) E		
(21-38) F		
(1-20) G		
Not energy efficient - higher running costs		
England & Wales	EU Directive 2002/91/EC	