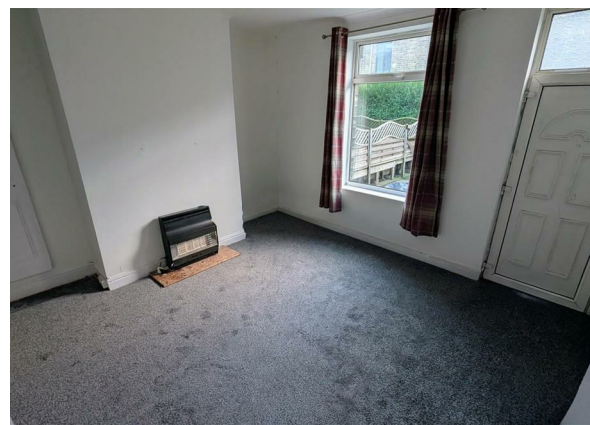


Nashville Terrace, Keighley, BD22 6DY

£750 Per Month

Council Tax Band: A



Welcome to this charming house located on Nashville Terrace, a popular area known for its convenient access to local amenities. This delightful property features a spacious reception room, perfect for entertaining guests or enjoying quiet evenings at home. With three well-proportioned bedrooms, this home offers ample space for a small family or professionals seeking a comfortable living environment.

The property boasts a newly decorated interior, complemented by fresh carpets throughout, creating an inviting atmosphere. The fully enclosed front garden and rear yard provide a lovely outdoor space, ideal for relaxation or outdoor activities.

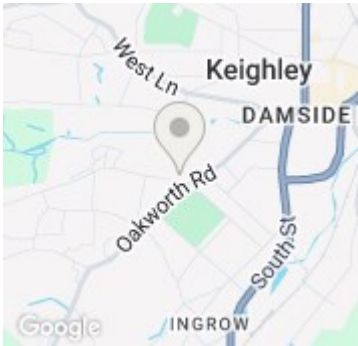
This house is not only a wonderful place to live but also benefits from its prime location, making it easy to access shops, parks, and other essential services. This property presents an excellent opportunity for those seeking a stylish and convenient home in a sought-after neighbourhood. Don't miss the chance to make this lovely house your new home.

Council Tax Band - A

This property briefly comprises;



Keighley



Energy Efficiency Rating		
	Current	Potential
Very energy efficient - lower running costs		
(92 plus) A		83
(81-91) B		
(69-80) C		
(55-68) D		
(39-54) E	55	
(21-38) F		
(1-20) G		
Not energy efficient - higher running costs		
England & Wales		EU Directive 2002/91/EC