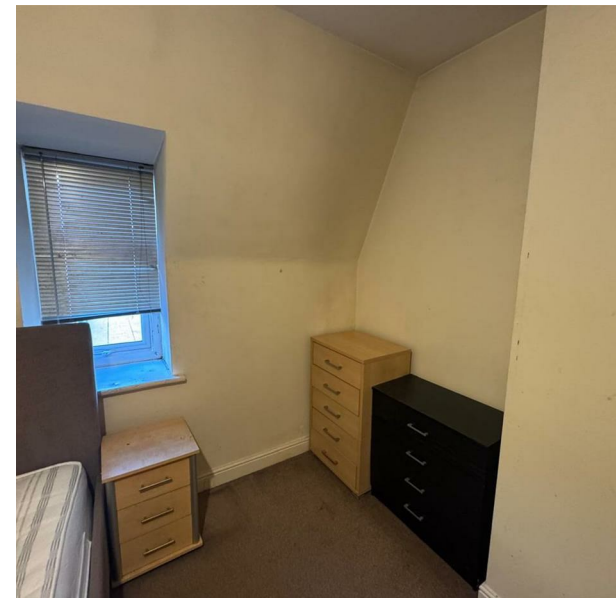


Flat 16, 129 Godwin Street, Bradford, BD1 3PP

£575 Per Month

Council Tax Band: A



Welcome to this charming flat located at Godwin Street in the heart of Bradford. This delightful one-bedroom apartment offers a perfect blend of comfort and convenience, making it an ideal choice for those seeking a long-term rental in the city centre.

Upon entering, you will find a well-proportioned reception room that provides a welcoming space for relaxation and entertaining. The flat features a cosy bedroom, perfect for unwinding after a busy day. The bathroom is thoughtfully designed, ensuring all your needs are met.

One of the standout features of this property is its prime location. Situated in the city centre, residents will enjoy easy access to a variety of shops, restaurants, and local amenities. Additionally, the excellent transport links make commuting a breeze, whether you are travelling for work or leisure.

This flat is perfect for individuals or couples looking for a comfortable home in a vibrant urban setting. With its appealing features and convenient location, this property is not to be missed. We invite you to come and experience the charm of this lovely apartment for yourself.



Keighley



Energy Efficiency Rating		
	Current	Potential
Very energy efficient - lower running costs		
(92 plus) A		
(81-91) B		
(69-80) C	78	83
(55-68) D		
(39-54) E		
(21-38) F		
(1-20) G		
Not energy efficient - higher running costs		
England & Wales	EU Directive 2002/91/EC	