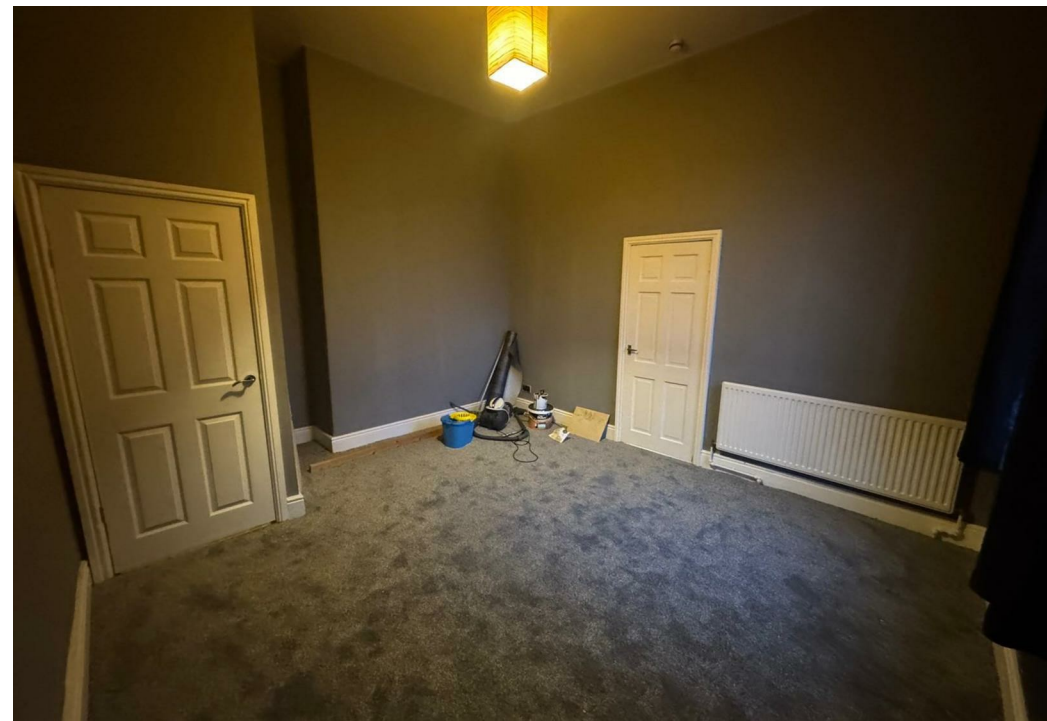


Flat 6, Bank Street, Dewsbury, WF12 7DF

£550

Council Tax Band:



Nestled on Bank Street in Dewsbury, this well-appointed one-bedroom flat offers a delightful living space for those seeking comfort and convenience.

Upon entering, you will find a welcoming reception room that provides a perfect setting for relaxation or entertaining guests. The bedroom and bathroom are equipped with essential amenities for your daily needs.

Residents will appreciate the proximity to local amenities, making daily errands and leisure activities easily accessible. Additionally, the property boasts private parking, a valuable asset in this bustling area.

Available early January, this charming flat presents an excellent opportunity for individuals or couples looking to settle in a vibrant community. With its blend of historical charm and practical features, this property is sure to appeal to a variety of prospective tenants. Do not miss the chance to make this delightful home your own.

Council Tax Band - A

This property briefly comprises;



Keighley



Energy Efficiency Rating		
	Current	Potential
Very energy efficient - lower running costs		
(92 plus) A	76	
(81-91) B		
(69-80) C		
(55-68) D		
(39-54) E		
(21-38) F		
(1-20) G		
Not energy efficient - higher running costs		
England & Wales		EU Directive 2002/91/EC
		