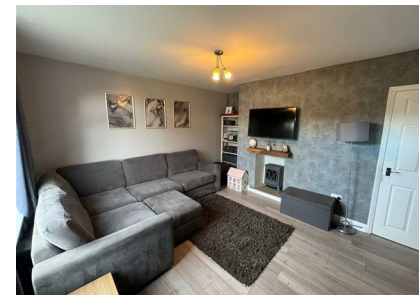


Hazelhurst Grove, Queensbury, Bradford, BD13 2LU

Asking Price £135,000

Council Tax Band: A



Nestled in the charming area of Hazelhurst Grove, Queensbury, this delightful terraced house presents an excellent opportunity for first-time buyers and small families alike. The property boasts three well-proportioned bedrooms, providing ample space for comfortable living. The reception room is inviting and well-presented, making it a perfect spot for relaxation or entertaining guests.

The house is set on a good-sized plot, offering potential for outdoor enjoyment and perhaps even a small garden area for children to play or for hosting summer barbecues. The layout of the home is practical and functional, ensuring that every corner is utilised effectively.

This property is not only appealing due to its size and presentation but also because of its location. Queensbury is a friendly community with local amenities nearby, making it convenient for everyday needs. The area is well-connected, providing easy access to Bradford and surrounding areas, which is ideal for commuting.

In summary, this terraced house on Hazelhurst Grove is a wonderful choice for those looking to step onto the property ladder or for small families seeking a comfortable and well-located home. With its appealing features and potential, it is certainly worth considering for your next move.



Keighley



Energy Efficiency Rating		
	Current	Potential
Very energy efficient - lower running costs		
(92 plus) A		
(81-91) B		
(69-80) C		
(55-68) D		
(39-54) E		
(21-38) F		
(1-20) G		
Not energy efficient - higher running costs		
England & Wales	EU Directive 2002/91/EC	